



2016



Woodbourn

The Quiet Alternative

37th Annual Sale

Monday 9th May 2016

at 12 noon

Woodbourn, Cressy, Northern Tasmania

Free freight within Tasmania, Bass Strait Islands,
Melbourne, Hamilton, Adelaide, Albury, Dubbo. (See inside for details)

TASMANIA - a nice place to be - a great place to visit

.....

As an avid reader of the weekend Australian, it has been both heartening and exciting to read the growing enthusiasm for and the visitor numbers to Tasmania. Two well written articles described in glowing terms just what Tasmania has to offer....it's diversity, beauty, fine food and wine and proximity to so many outstanding experiences. It was once the place that everyone has on their to do list but often did not make it. This is all changing. The recent Tourism awards acknowledge all the above with Tasmania scooping 19 awards, seven of them gold.



While many enjoy the high class adventure tourism Tasmania has to offer, with Cradle mountain and the new Three Capes walks the most iconic, there is a blossoming array of fine food and wine, whisky distilleries, cider, berries, so much fresh produce, fine hotels and luxury getaways, but also an exciting arts and culture scene....with Mona heading this genre. Mona attracts people to Tasmania as a stand alone reason to visit Hobart.



Numbers are growing at 7 percent per year with 1.14 million people visiting last year. There are periods when both hotel rooms and hire cars are hard to come by.

Tasmania seems to have everything in one place, from penguins and fast boat cruises around the sea cliffs of Bruny and Tasman islands, to dreamy reflections along the west coast wilderness river from Strahan, to historic buildings, wine trails from Launceston along the Tamar River, Launceston's iconic Cataract gorge in the heart of the city and the award winning Josef Chromy wine and food centre, mountains, rivers,



National parks, World Heritage forest areas, white beaches and a new sophistication which attracts a broad spectrum of people from all over. Tasmania attracts the young and the old and all in between with it's blend of hiking trails, new world class biking trails, luxury accommodation and food and wine and camping possibilities for families and many other combinations. One of Australia's biggest Agricultural Field Days, Agfest, is held in the three days before the Woodbourn Sale; Thursday, Friday, Saturday.

We at Woodbourn have suggested each year, that bookings need to be made early for travel to Tasmania....we now think with this new level of visitor numbers, the need to plan ahead is even more important.

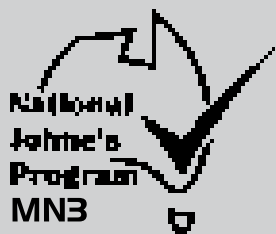
Woodbourn Sale Day 9th May 2016 at 12 noon



We look forward to seeing you here.
Charles and Janet Wallace
0363 976 285, 0409 397628
wallace@intas.net.au



Jetstar 13 1538, Virgin 136789, Qantas 131313, TT Line 132010, Avis 136333



WA Eligible



CONTACT

Charles Wallace
Woodbourn
390 Saundridge Road
Cressy 7302
TASMANIA

Ph: 03 6397 6285
0409 397 628
Fax: 03 6397 6483
E: wallace@intas.net.au
www.woodbournstud.com.au

Lauchlan Cole
Ph: 03 6397 6391
0419 150 808

Sarah Cole
Ph: 0407 051 047

AGENTS
Please see full details
on page 46.

Roberts Ltd
– 03 6391 6555
Tim Woodham
– 0418 323 425
Jock Gibson
– 0418 133 595
David Bennett
– 0439 632 374
Peter Skinner
– 0418 146 997

Elders
– 03 6398 8502
Greg Harris
– 0409 799 960

Daniel Morice
– 0409 170 419
Danny Slater
– 0437 302 266

AML
John Atkins
– 0428 690 267

WOODBOURN MURRAY GREY SALE

www.woodbournstud.com.au

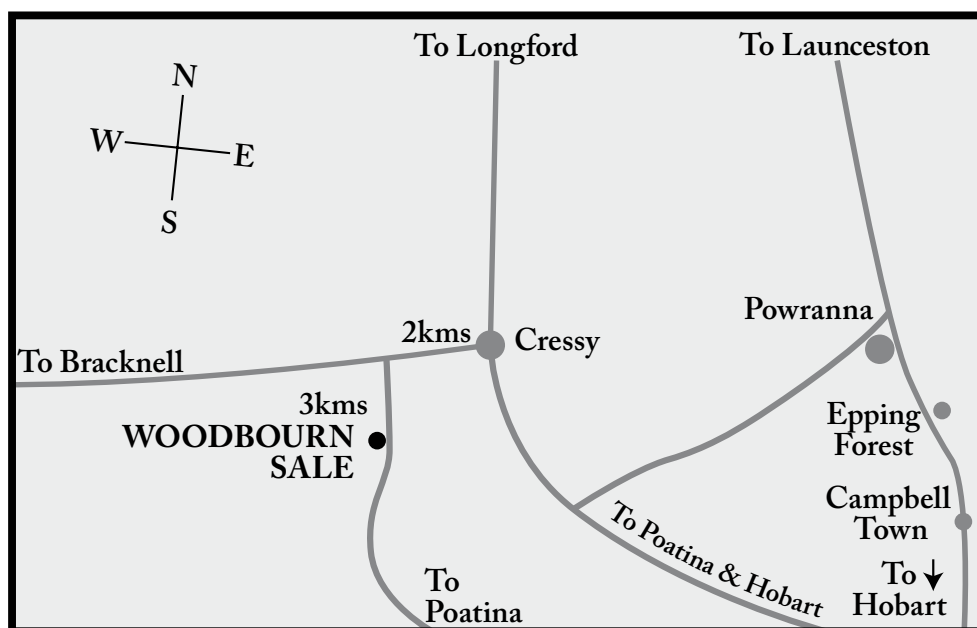
A.B.N. 87 605 256 807

Thirty Seventh Annual Production Sale

Monday 9th May 2016
at 12 noon

Offering
32 Bulls • 30 Females

To alleviate stress on animals, there will be no open day this year, however, the cattle will be in paddocks that can be driven over from 2 until 4pm. Light refreshments will be available on Sunday 8th May.



HOW TO GET THERE

Address: Woodbourn, 390 Saundridge Road Cressy, Tasmania

From the north, north west and north east
Get to Longford and travel due south through to Cressy (10kms). Turn right between the church and the school and travel 2 kms. Turn left and travel for 3kms. Sale is on your right.

From the South
Get to Epping Forest and continue 10km to Powranna where the sign directs you to Cressy. Continue on this road (21 kms) to a T section. Turn right to Cressy and then left between the church and the school in the Cressy township. Proceed 2kms, turn left and travel 3kms. Sale is on the right.



Charles and Janet Wallace

47 years of breeding
Murray Greys

SALE DAY

AGENTS

Guest Auctioneer: Mr Rob Perkins

Roberts:

Tim Woodham: 0418 323 425

Jock Gibson: 0418 133 595

David Bennett: 0439 632 374

Peter Skinner: 0418 146 997

Elders:

Greg Harris: 0409 799 960

Daniel Morice: 0409 170 419

Danny Slater: 0437 302 266

Outside Agents

AML:

John Atkins: 0428 690 267

HEALTH

See page 4.

SAFETY

Under normal conditions our bulls are placid and quiet, however care must be taken when inspecting bulls as crowd pressure can alter their behaviour. Please do not crowd the bulls and ask for assistance if you would like a closer inspection. Visitors enter the pens at their own risk. Children must not enter the pens at any time.

SALE AGENTS' REBATE:

A rebate of 2% and 4% will be paid to outside agents. Details in sale notes on page 5.

CONDITIONS OF SALE

These are as displayed by the agents on sale day.

SUPPLEMENTARY SHEETS

On sale day the supplementary sheets will have weights, pen numbers and scrotal sizes.

TRAVEL - See inside front cover

GST

The cattle are sold GST exclusive and will be invoiced with GST included.

DELIVERY INSTRUCTIONS

Full freight details on Sale notes page 5. Please fill out the Buyers Instructions Slip at the back of the catalogue. Verbal instructions cannot be accepted.

INSURANCE

Insurance risk of stud animals sold at auction transfers to the purchaser at the fall of the hammer, including animals that remain on the vendor's property. Purchasers are therefore advised to insure their animals at the completion of the sale. Stud animals are not covered by commercial livestock insurance.

We recommend Roberts Insurance and Bob Kerr of Steadfast Insurance, who will be in attendance on sale day.

HINTS TO COMMERCIAL BREEDERS

If joining females with single bulls, it is well advised to change bulls around the mobs. This will alleviate dry cows, if a bull is not working. Even though the bulls are semen tested, injuries can occur and can prevent joining. Note the date the bulls are rotated.

Inspection from 9.30 am • Morning Tea and Lunch Provided • Sale starts at 12 noon

Breedplan summary

for 2016 Woodbourn Sale Bulls

5 bulls in top 1% for milk

5 bulls in the top 5% for milk

13 bulls in the top 20% for milk

9 bulls in the top 5% for growth

16 bulls are in the top 20% for growth

17 bulls with positive fats, some in the top 1%

14 bulls in the top 20% or over, some in the top 5% for EMA

16 are in the top 20% for IMF.

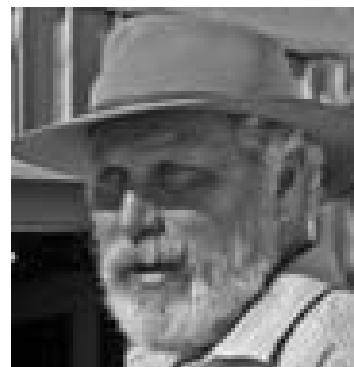
Averages over the past few years.

2015	Bulls \$4696
	Mature females \$2732
	Heifers \$1520
2014	Bulls \$4208
	Mature females \$2928
	Heifers 1560
2013	Bulls \$4241
	Mature females \$1869
	Heifers \$1416
2012	Bulls \$4469
	Mature females \$2546
	Heifers \$1847

WELCOME

Welcome

What an interesting year we have had since our sale last May. Dry winter, no moisture at all during the spring and a hot summer. The only saving grace has been the unprecedented rise in the value of cattle. The amazing confidence boost to the industry is huge. The long term outlook for cattle is most encouraging, as can be evidenced by the weaner and fats markets. Woodbourn recently sold weaner steers, five to six months of age, for double the amount received in other years. A great result in such a dry autumn.



Janet and I are thrilled with the offering this year. In the bulls, we have built in the easy doing type that we have been breeding for over many years. As I stated in last year's catalogue, I would suggest you turn to page seven to study the graphs. As these graphs cover the figures from across the whole Woodbourn herd, the sale cattle will be at the much higher end of the scale as they are out of the tops of the herd. Birth weights are very much under control, with a line of heifer bulls (not only figures but also phenotype), suitable for all breeds. The length, thickness, scrotal (semen tested), tight sheaths are all very good, while maintaining the true Murray Grey type that we have found people are looking for. We are finding clients are meeting the MSA grid, time and time again, with their Woodbourn genetics, with the benefit of the Woodbourn carcass attributes.

All the cattle on offer have been grass reared only and have been given no grain or pellets. We are maintaining our type of long, thick cattle, with definite shape (many over "B" butt scores). Truly honest cattle.

The females this year are very good maternal types. The autumn calving cows are the solid, good capacity style that breed well. The heifers are outstanding, but I will let you be the judge of that.

We were most fortunate to be able to purchase a line of females from Big Park, that complement our herd so well. I would like to thank the Menegons for that opportunity.

As a note to our future. The Angus cattle have all gone (phew!) and we remain in serious Murray Grey mode, having purchased the top priced bulls from Melaleuca and Tullabardine in Western Australia in partnership with Barry Mc Donald of New Zealand.

As you are aware, we are still freighting our cattle to your advantage (see freight conditions), and our guarantees still apply, basically, if it's our problem, we fix it.

In conclusion, I would like to thank all at Woodbourn for their efforts for the sale and the field days that we have had. A great team doing a fantastic job.

We look forward to seeing you here at Woodbourn on the 9th May. With fogs and Melbourne roadworks, it would be much easier to travel to Tasmania the day before, and of course, we recommend early bookings for both airfares and accommodation.

Regards

Charles

WOODBOURN SALE NOTES

GUARANTEE

All bulls are guaranteed. In the unlikely event of a bull becoming infertile or incapable of natural service, within two years of the sale date, the vendor will offer to supply a suitable replacement, as quickly as possible, if available, or credit the purchase price, less salvage value of the bull, to be used at the next sale, on one animal. This is on the provision that the problem was not caused by injury or disease contracted after delivery. The guarantee covers the purchase price of the bull, less salvage, without interest, costs or damages. Any claim must be accompanied by a relevant veterinary certificate.

Insurance is your responsibility, and we strongly recommend that you act on it.

REMEMBER: "If it's our problem, we fix it".

We strongly recommend that you observe your new bull when he is first introduced to the cows and if you have any concerns, please do not hesitate to contact us.

HEALTH

All bulls offered in this sale:

- All bulls have been semen tested.
- Have been vaccinated 7-in-1 and inoculated against BVDV, Leptospirosis, and Vibriosis.
- Have been ear notched and tested for BVDV. No PI's in the sale.
- Are part of the Johnes Disease Market Assurance Program and are monitored negative, MN3 status. MN3 Certificate No: TB6.99.02. All cattle eligible to enter WA.
- Genetic abnormalities. The status of CA is stated on each lot.
CAF = tested free
CAI = free by inheritance
CAU = untested
- Have been DNA profiled with sire verification recorded and found to be correct.
- It is also advised that before any male calves born from Woodbourn females are used, they have their DNA recorded and verified.
- All bulls are registered unless otherwise noted.

Adult Females offered in the sale are:

- Vaccinated 7 in 1
- Calves at foot are vaccinated
- Have been inoculated against BVDV
- Have been ear notched and tested for BVDV. No PI's
- Are part of the Johnes Disease Market Assurance Program and are monitored negative, MN3 status. MN3 Certificate No: TB6.99.02
- Have been internally examined and found to be sound for breeding
- Guaranteed fertile and to breed under normal circumstances
- Have been pregnancy tested with results on each lot



INSPECTIONS

Sale cattle will be available for inspection from 9.30am on sale day. Inspection prior to the sale may be arranged with the vendor, and Open Day paddock drive 2-4pm Sunday 8th May.

GROUP BREEDPLAN

Woodbourn Murray Greys are Group Breedplan evaluated on Murray Grey Group Breedplan. All cattle have been weighed at birth and the milestones dates that follow, and have been scanned for carcass data and Group Breedplan evaluated for Birthweight, Milk, Growth and Carcass traits.

IDENTIFICATION

All cattle will have ear tags with Lot numbers and an NLIS tag.

The property ID number is MBLF0124. National Vendor Declaration is at back of catalogue.

WOODBOURN SALE NOTES

TRANSPORT

Woodbourn will arrange free delivery on bulls purchased at auction for more than \$3000 and on females purchased at auction for more than \$2500 to:

- ✓ Victoria - Melbourne, Hamilton, Wodonga.
- ✓ NSW - Albury, Dubbo
- ✓ SA - Adelaide
- ✓ Local area, if requested. Cattle sold within Tasmanian mainland will be delivered free of charge.
- ✓ Tas - sea freight only to King Island and Flinders Island
- ✓ WA - will pay \$500 towards freight of each bull purchased at auction for more than \$4000 for consignment to Western Australia. \$250 for females purchased at auction for more than \$2500.
- ✓ Woodbourn is also prepared to offer some additional freight assistance to buyers in the Eastern states who purchase more than five animals.

Free freight to the mainland is dependent on all mainland cattle moving as one, as has been the case for many years.

REBATE

A rebate of 4% will be paid to outside agents accompanying buyers on sale day, provided that they have nominated the buyer in writing 24 hours prior to the sale and settle on their behalf within 7 days of the sale. Unless otherwise agreed with the vendor, a rebate of 2% will be paid to outside agents who do not attend the sale, but nominate a buyer at least 24 hours prior to the sale and settle on the buyers behalf within 7 days. In all cases the agent must be nominated on the Buyers Registration Form.

TRANSFERS

All registered animals sold will be transferred on request.

REFERENCE SIRES

Details of reference sires at back of catalogue.

AGENTS

Full list of agents at back of catalogue

TRAVEL: Qantas 131313 Jetstar 131538 Virgin 136789

There are many great deals available for flights to Launceston and Hobart - ring the numbers supplied above or view them online.





WOODBOURN ANNUAL MURRAY GREY SALE

12 noon, Monday 9th May, 2016

390 Saundridge Road, Cressy, Northern Tasmania

*Join Charles and Janet Wallace at Woodbourn, as they offer
32 bulls and 12 cows and calves and 18 heifers.*

Inspection from 9.30am, morning tea and lunch is provided.



All bulls on offer are:

- ✓ **BREEDPLAN RECORDED**
- ✓ **DELIVERED FREE IN TASMANIA**
- ✓ **FREIGHT ASSISTED ACROSS ALL STATES**
- ✓ **ELIGIBLE FOR ENTRY TO ALL STATES, INCLUDING WA**
- ✓ **SCANNED FOR CARCASE TRAITS**
- ✓ **SEMEN TESTED**
- ✓ **CA FREE**
- ✓ **BVDV TESTED -NO PI'S**
- ✓ **GUARANTEED**
- ✓ **QUALITY ASSURED CATALOGUE**
- ✓ **GRASS REARED**
- ✓ **VACCINATED AGAINST VIBRIOSIS AND LEPTOSPIROSIS**
- ✓ **7-IN-1 VACCINATED**
- ✓ **MN3 IN JOHNES MARKET ASSURANCE PROGRAM**
- ✓ **ALL REGISTERED ANIMALS WILL BE TRANSFERRED ON REQUEST**

Woodbourn takes every step to ensure the animals presented for sale are healthy and sound.

Contact details:

Charles Wallace 0363976285, 0409 397628
wallace@intas.net.au



Woodbourn Group Breedplan EBV Charts

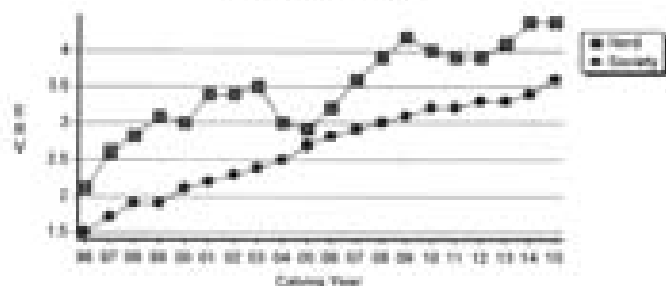


The following tables are comparisons for the whole herd.

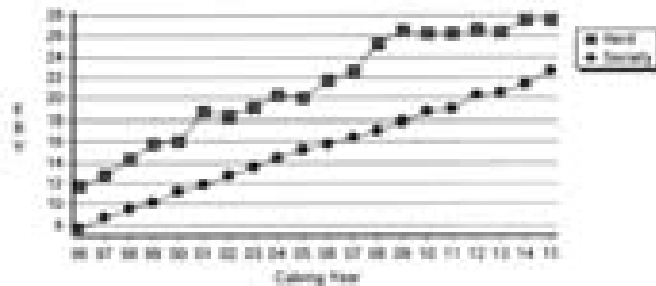


This catalogue contains the pick of the herd and therefore the comparisons will be far greater.

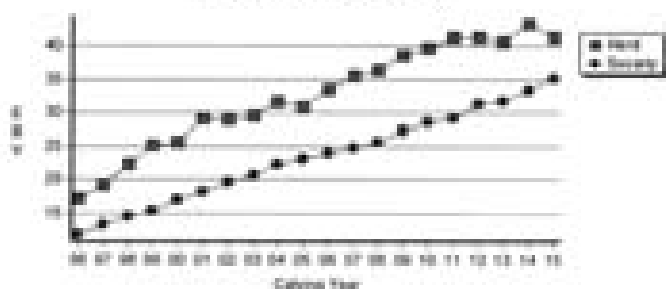
Birth Weight (kg)



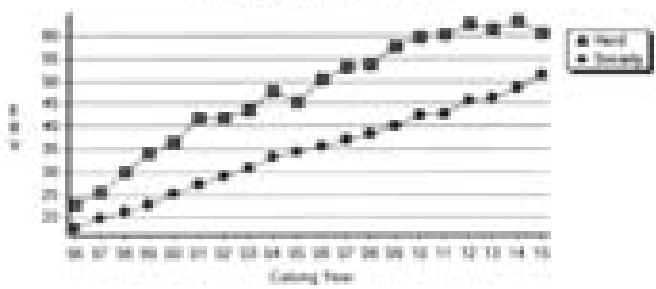
200 Day Growth (kg)



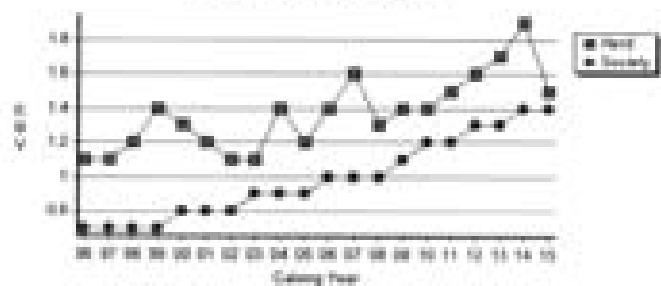
400 Day Weight (kg)



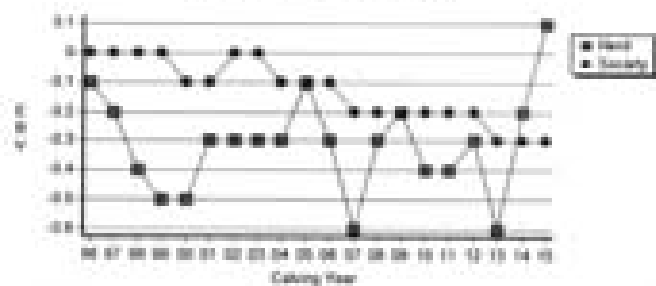
600 Day Weight (kg)



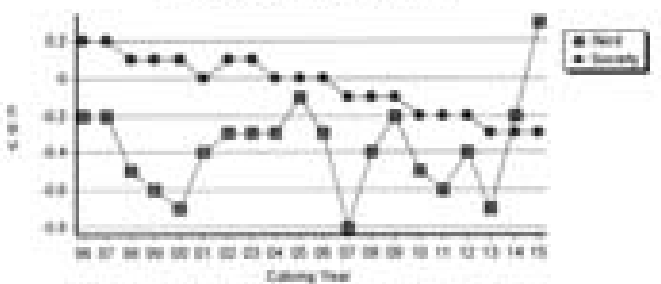
Carcase EMA (sq cm)



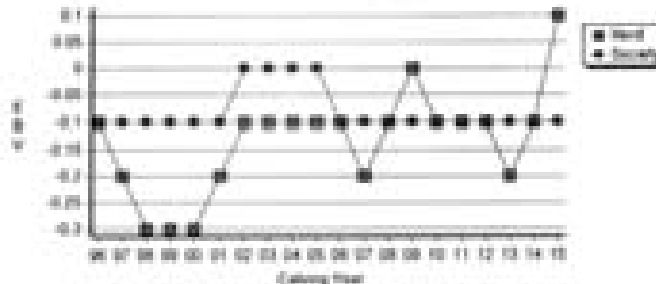
Carcase Rib Fat (mm)



Carcase Rump Fat (mm)



Carcase IMF (%)





Lot 14 Woodbourn Kaput K25



Lot 21 Woodbourn Keyman K32



EBV Summary for Woodbourn Sale Bulls



Lot	Ident	BW	200	400	600	MILK	EMA	RIB	RUMP	RBV	IMF	VT	SUP	EU
1	4W K78	+3.9	+34	+50	+69	+10	+2.5	-0.4	-0.5	+1.5	-0.1	+\$48	+\$50	+\$68
2	4W K76	+5.4	+33	+47	+77	+9	+2.8	-0.9	-1.2	+2.0	-0.2	+\$45	+\$40	+\$68
3	4W K102	+4.8	+29	+48	+71	+6	+2.0	-0.8	-1.1	+1.6	-0.3	+\$44	+\$48	+\$70
4	4W K39	+4.5	+32	+47	+69	+8	+1.7	+0.7	+1.0	+0.2	+0.3	+\$44	+\$48	+\$68
5	4W K105	+5.6	+34	+57	+79	+5	+1.5	-0.2	-0.1	+0.8	+0.0	+\$42	+\$53	+\$74
6	4W K74	+3.4	+26	+37	+56	+5	+2.4	+0.5	+0.8	+0.5	+0.2	+\$37	+\$37	+\$57
7	4W K51	+4.1	+31	+54	+74	+5	+2.0	+0.0	+0.1	+0.9	+0.0	+\$47	+\$54	+\$73
8	4W K67	+4.6	+24	+41	+58	+5	+2.5	+0.9	+1.3	+0.1	+0.5	+\$28	+\$37	+\$54
9	4W K101	+5.7	+32	+56	+80	+5	+2.6	-0.1	-0.1	+1.2	+0.0	+\$43	+\$55	+\$79
10	4W K72	+3.3	+22	+37	+55	+9	+1.6	-1.7	-2.3	+2.1	-0.6	+\$41	+\$36	+\$53
11	4W K52	+2.2	+25	+35	+55	+7	+1.2	-0.8	-0.9	+1.0	+0.0	+\$43	+\$35	+\$53
12	4W K87	+2.0	+24	+42	+56	+8	+1.8	-1.3	-1.8	+1.8	-0.5	+\$43	+\$41	+\$55
13	4W K103	+3.2	+22	+34	+47	+4						+\$30	+\$34	+\$46
14	4W K25	+3.7	+24	+31	+51	+10	+2.1	+1.6	+2.3	+0.0	+0.4	+\$36	+\$35	+\$59
15	4W K6	+4.2	+28	+50	+70	+3	+1.9	-1.3	-1.8	+1.9	-0.5	+\$40	+\$48	+\$68
16	4W K7	+6.4	+35	+57	+80	+5	+1.5	+0.4	+0.6	+0.4	+0.2	+\$36	+\$49	+\$71
17	4W K31	+3.4	+21	+35	+49	+2	+1.5	-0.3	-0.3	+0.9	-0.2	+\$29	+\$37	+\$51
18	BPT K11	+4.0	+21	+25	+44	+4	+0.7	-0.4	-0.5	+0.6	-0.2	+\$22	+\$12	+\$31
19	BPT K27	+4.3	+25	+39	+58	+2	+2.2	-0.9	-1.1	+1.5	-0.1	+\$36	+\$34	+\$51
20	BPT K16	+3.3	+20	+26	+34	+5	+0.8	+0.1	+0.3	+0.6	-0.3	+\$28	+\$23	+\$33
21	4W K32	+6.3	+38	+65	+88	+2	+2.7	-0.3	-0.3	+1.5	-0.1	+\$49	+\$61	+\$85
22	4W K11	+4.9	+25	+34	+56	+2	+0.5	+0.7	+1.1	+0.0	+0.1	+\$25	+\$30	+\$53
23	BPT K19	+2.0	+14	+16	+37	+7	+0.5	+0.4	+0.7	-0.1	+0.2	+\$17	+\$10	+\$33
24	4W K14	+4.5	+22	+33	+51	+2	+1.9	-0.5	-0.7	+1.2	-0.1	+\$28	+\$34	+\$50
25	4W K18	+3.9	+28	+40	+56	+6	+1.2	-0.1	-0.1	+0.9	-0.2	+\$37	+\$41	+\$57
26	4W K117	+4.6	+29	+41	+62	+8	+1.4	+0.0	+0.0	+0.6	+0.2	+\$33	+\$35	+\$53
27	4W K55	+1.5	+15	+21	+35		+1.4	+1.7	+2.4	-0.7	+0.6	+\$25	+\$30	+\$46
28	4W K43	+2.0	+22	+37	+55	+12	+1.9	-0.8	-1.0	+1.5	-0.4	+\$45	+\$42	+\$61
29	4W K111	+5.0	+28	+46	+70	+6	+1.6	-0.4	-0.4	+1.0	-0.2	+\$37	+\$43	+\$66
30	4W K64	+4.9	+28	+43	+64		+2.0	+0.4	+0.6	+0.4	+0.2	+\$33	+\$38	+\$58
31	4W K115	+4.7	+29	+51	+71	+2	+1.6	-0.7	-0.9	+1.2	-0.2	+\$40	+\$48	+\$67
32	4W K75	+5.5	+33	+50	+73	+2	+2.2	-0.4	-0.4	+1.4	-0.1	+\$43	+\$47	+\$70
Breed Average		+3.4	+21	+33	+48	+3	+1.4	-0.3	-0.3	+0.8	-0.1	+\$34	+\$33	+\$49

SALE CATALOGUE DISCLAIMER

All reasonable care has been taken by the vendor to ensure that the information provided in this catalogue is correct at the time of publication. However, neither the vendor or the selling agents make no other representations about the accuracy, reliability or completeness of any information provided in this catalogue and do not assume any responsibility for the use or interpretation of the information included in this catalogue. You are encouraged to seek independent verification of any information contained in this catalogue before relying on such information.

32 Bulls for Stud and Commercial Use

LOT 1 WOODBOURN KERNEL K78 (PB)

Born: 16/09/2014

Colour: Grey

Tattoo: 4W K78

Genetic Conditions: CAI AMU NHU

Sire: MELALEUCA ARTILLARY A16 (PB)

WOODBOURN GALAXY G107 (PB)

WOODBOURN PEGGY T42 (PB)

WOODBOURN ROCKET MAN A11 (PB)

Dam: WOODBOURN MISS JEANETTE D1 (PB)

WOODBOURN MISS JEANETTE A74 (PB)

NOTES: A very good bull to start the sale with. Outlook, shape, strength, and overall thickness. The butt on this bull is quite outstanding. One of the best bulls we have produced by the Woodbourn sire, Woodbourn Galaxy G107. His overall Breedplan figures are excellent, as are his index figures.

\$Index Values

Long Fed +\$48

Supermarket +\$50

Heavy Grass +\$68

February 2016 Murray Grey GROUP BREEDPLAN

	GROWTH AND MATERNAL						FERT	CARCASE					
	Birth Weight (kg)	Milk (kg)	200-Day Wt (kg)	400-Day Wt (kg)	600-Day Wt (kg)	Mature Cow Wt (kg)	Scrotal Size (cm)	Carcass Wt (kg)	EMA (sq cm)	Rib Fat (mm)	Rump Fat (mm)	Retail Beef Yield %	Intra-Muscular Fat %
EBV	+3.9	+10	+34	+50	+69	+65		+47	+2.5	-0.4	-0.5	+1.5	-0.1
Acc	76%	46%	68%	68%	64%	50%		56%	48%	54%	54%	51%	44%

RAW DATA

Frame	Scrotal
6.5	

Purchaser: _____ \$ _____

LOT 2 WOODBOURN KITBAG K76 (PB)

Born: 13/08/2014

Colour: Silver

Tattoo: 4W K76

Genetic Conditions: CAI AMU NHU

Sire: KELSO CRACKER C17 (GR2)

WOODBOURN F18 HORNET (PB)

WOODBOURN MISS ROSIE C95 (PB)

BUNDALER X ROAD X37 (PB)

Dam: WOODBOURN CARRIE C8 (PB)

WOODBOURN MISS CARRIE R45 (PB)

NOTES: This young bull has tremendous carcass. He is very long and smooth with great jump muscle expression. Certainly well endowed in the testicle department, as are all his mates. Moderate birth, very high growth and milk, and exceptionally high EMA. Check out his index numbers; outstanding.

\$Index Values

Long Fed +\$45

Supermarket +\$40

Heavy Grass +\$68

February 2016 Murray Grey GROUP BREEDPLAN

	GROWTH AND MATERNAL						FERT	CARCASE					
	Birth Weight (kg)	Milk (kg)	200-Day Wt (kg)	400-Day Wt (kg)	600-Day Wt (kg)	Mature Cow Wt (kg)	Scrotal Size (cm)	Carcass Wt (kg)	EMA (sq cm)	Rib Fat (mm)	Rump Fat (mm)	Retail Beef Yield %	Intra-Muscular Fat %
EBV	+5.4	+9	+33	+47	+77	+83		+48	+2.8	-0.9	-1.2	+2.0	-0.2
Acc	78%	41%	70%	70%	65%	52%		57%	48%	56%	56%	53%	47%

RAW DATA

Frame	Scrotal
5.8	

Purchaser: _____ \$ _____

LOT 3 WOODBOURN KNOBBY K102 (PB)

Born: 04/09/2014

Colour: Silver

Tattoo: 4W K102

Genetic Conditions: CAI AMU NHU

Sire: MONTEREY COUGAR C72 (PB)

MELALEUCA GHANDI G112 (PB)

MELALEUCA MINNOW Z95 (PB)

JYNDARRA WARRIOR W3 (PB) (AI)

Dam: WOODBOURN MISS BARBARA Z41 (PB)

WOODBOURN MISS BARBARA S7 (PB)

NOTES: This bull is certainly worthy of his position at Lot 3. Great sires outlook. Long and thick, standing on good legs and feet. He has exceptional figures across the board. One of the younger bulls in the sale.

\$Index Values

Long Fed +\$44

Supermarket +\$48

Heavy Grass +\$70

February 2016 Murray Grey GROUP BREEDPLAN

	GROWTH AND MATERNAL						FERT	CARCASE					
	Birth Weight (kg)	Milk (kg)	200-Day Wt (kg)	400-Day Wt (kg)	600-Day Wt (kg)	Mature Cow Wt (kg)	Scrotal Size (cm)	Carcass Wt (kg)	EMA (sq cm)	Rib Fat (mm)	Rump Fat (mm)	Retail Beef Yield %	Intra-Muscular Fat %
EBV	+4.8	+6	+29	+48	+71	+69	+1.2	+44	+2.0	-0.8	-1.1	+1.6	-0.3
Acc	78%	48%	71%	71%	67%	54%	50%	59%	50%	58%	58%	54%	48%

RAW DATA

Frame	Scrotal
5.8	

Purchaser: _____ \$ _____

LOT 4 WOODBOURN KIMBERLEY K39 (PB)

Born: 15/08/2014

Colour: Grey

Tattoo: 4W K39

Genetic Conditions: CAI AMU NHU

Sire: MELALEUCA ARTILLARY A16 (PB)

WOODBOURN EUREKA E86 (PB)

WOODBOURN PEGGY T42 (PB)

JYNDARRA WARRIOR W3 (PB) (AI)

Dam: WOODBOURN PEPPER A9 (PB)

WOODBOURN MISS PEPPER X38 (PB)

NOTES: This is an outstanding bull. His length, smoothness and outlook really puts him in the top drawer. Very sound legs and feet, a tight sheath, combined with his outstanding Breedplan figures, it is easy to see why this bull has been catalogued where he is. His mother 4W A9 has been a great producer for us. Rarely do you get breed average birth, very high growth and milk with exceptional EMA and fats in the Murray Grey breed. Note his IMF of +0.3. One would have to look seriously at this bull.

\$Index Values

Long Fed +\$44

Supermarket +\$48

Heavy Grass +\$68

February 2016 Murray Grey GROUP BREEDPLAN

	GROWTH AND MATERNAL						FERT	CARCASE					
	Birth Weight (kg)	Milk (kg)	200-Day Wt (kg)	400-Day Wt (kg)	600-Day Wt (kg)	Mature Cow Wt (kg)	Scrotal Size (cm)	Carcass Wt (kg)	EMA (sq cm)	Rib Fat (mm)	Rump Fat (mm)	Retail Beef Yield %	Intra-Muscular Fat %
EBV	+4.5	+8	+32	+47	+69	+63		+41	+1.7	+0.7	+1.0	+0.2	+0.3
Acc	78%	48%	71%	71%	67%	54%		60%	51%	58%	58%	55%	48%

RAW DATA

Frame	Scrotal
6.2	

Purchaser: _____ \$ _____



Lot 1 Woodbourn Kernel K78



Lot 2 Woodbourn Kitbag K76



Lot 3 Woodbourn Knobby K102



Lot 4 Woodbourn Kimberley K39

LOT 5 WOODBOURN KAROO K105 (PB)

Born: 06/10/2014

Colour: Silver

Tattoo: 4W K105

Genetic Conditions: CAI AMU NHU

Sire: MELALEUCA GHANDI G112 (PB)

MONTEREY COUGAR C72 (PB)
MELALEUCA MINNOW Z95 (PB)

Dam: WOODBOURN MISS HEATHER G47 (PB)

ONWARD JEREMIAH (PB)
WOODBOURN MISS HEATHER B79 (PB)**NOTES:** There is certainly some scale, length and outlook here.in this extremely young, late maturing bull. Huge growth EBV's and very high milk.

\$Index Values

Long Fed +\$42

Supermarket +\$53

Heavy Grass +\$74

February 2016 Murray Grey GROUP BREEDPLAN

	GROWTH AND MATERNAL						FERT	CARCASE					
	Birth Weight (kg)	Milk (kg)	200-Day Wt (kg)	400-Day Wt (kg)	600-Day Wt (kg)	Mature Cow Wt (kg)	Scrotal Size (cm)	Carcass Wt (kg)	EMA (sq cm)	Rib Fat (mm)	Rump Fat (mm)	Retail Beef Yield %	Intra-Muscular Fat %
EBV	+5.6	+5	+34	+57	+79	+79		+48	+1.5	-0.2	-0.1	+0.8	+0.0
Acc	76%	40%	67%	69%	64%	51%		57%	48%	55%	55%	52%	45%

RAW DATA

Frame	Scrotal
6.4	

Purchaser: _____ \$ _____

LOT 6 WOODBOURN KAPAYA K74 (PB)

Born: 13/09/2014

Colour: Silver

Tattoo: 4W K74

Genetic Conditions: CAF AMU NHU

Sire: WOODBOURN GALAXY G107 (PB)

MELALEUCA ARTILLARY A16 (PB)
WOODBOURN PEGGY T42 (PB)

Dam: KELSO TRINA (PB)

ONWARD JOHNSEN (PB)
KELSO TRINA Z38 (PB)**NOTES:** A very smooth, low birthweight bull suitable for heifers. Moderate to high growth with outstanding carcass EBV's. This young bull should develop into a very good sire. His smoothness and butt development make him useful for both cow and heifer joining. A good all round, appealing young sire.

\$Index Values

Long Fed +\$37

Supermarket +\$37

Heavy Grass +\$57

February 2016 Murray Grey GROUP BREEDPLAN

	GROWTH AND MATERNAL						FERT	CARCASE					
	Birth Weight (kg)	Milk (kg)	200-Day Wt (kg)	400-Day Wt (kg)	600-Day Wt (kg)	Mature Cow Wt (kg)	Scrotal Size (cm)	Carcass Wt (kg)	EMA (sq cm)	Rib Fat (mm)	Rump Fat (mm)	Retail Beef Yield %	Intra-Muscular Fat %
EBV	+3.4	+5	+26	+37	+56	+58		+35	+2.4	+0.5	+0.8	+0.5	+0.2
Acc	76%	44%	68%	68%	64%	50%		55%	46%	55%	55%	51%	44%

RAW DATA

Frame	Scrotal
5.4	

Purchaser: _____ \$ _____

LOT 7 WOODBOURN KILN K51 (PB)

Born: 27/08/2014

Colour: Silver

Tattoo: 4W K51

Genetic Conditions: CAI AMU NHU

Sire: WOODBOURN AMIGO D8 (PB)

WOODBOURN ROCKET MAN A11 (PB)
WOODBOURN AGNES A44 (PB)

Dam: WOODBOURN PEGGY Y15 (PB)

MONTEREY TALENT SCOUT (PB)
WOODBOURN PEGGY P108 (PB)**NOTES:** This outstanding young bull was used as a yearling last year over 25 cows and heifers. We have always had a soft spot for his sire Woodbourn Amigo D8 and Kiln's dam 4W Y15. When looking at his outstanding figures, it is easy to understand why we chose this bull to use in our own herd. It is always hard to find a bull who is well above breed average in all boxes. A quiet, thick, mobile young bull.

\$Index Values

Long Fed +\$47

Supermarket +\$54

Heavy Grass +\$73

February 2016 Murray Grey GROUP BREEDPLAN

	GROWTH AND MATERNAL						FERT	CARCASE					
	Birth Weight (kg)	Milk (kg)	200-Day Wt (kg)	400-Day Wt (kg)	600-Day Wt (kg)	Mature Cow Wt (kg)	Scrotal Size (cm)	Carcass Wt (kg)	EMA (sq cm)	Rib Fat (mm)	Rump Fat (mm)	Retail Beef Yield %	Intra-Muscular Fat %
EBV	+4.1	+5	+31	+54	+74	+67		+47	+2.0	+0.0	+0.1	+0.9	+0.0
Acc	78%	50%	71%	70%	67%	55%		58%	42%	48%	48%	46%	42%

RAW DATA

Frame	Scrotal
6.2	

Purchaser: _____ \$ _____

LOT 8 WOODBOURN KILIM K67 (PB)

Born: 10/09/2014

Colour: Silver

Tattoo: 4W K67

Genetic Conditions: CAI AMU NHU

Sire: WOODBOURN EUREKA E86 (PB)

MELALEUCA ARTILLARY A16 (PB)
WOODBOURN PEGGY T42 (PB)

Dam: BIG PARK EVITA Z66 (PB)

KYNWOOD TOP EDITION (PB)
BIG PARK VALDAWN V55 (PB)**NOTES:** One of the highest sets of carcass figures in the catalogue. His EMA of +2.5, very very high fats and an IMF of +0.5 should attract a lot of interest. This very smooth long young bull would be ideal over heifers.

\$Index Values

Long Fed +\$28

Supermarket +\$37

Heavy Grass +\$54

February 2016 Murray Grey GROUP BREEDPLAN

	GROWTH AND MATERNAL						FERT	CARCASE					
	Birth Weight (kg)	Milk (kg)	200-Day Wt (kg)	400-Day Wt (kg)	600-Day Wt (kg)	Mature Cow Wt (kg)	Scrotal Size (cm)	Carcass Wt (kg)	EMA (sq cm)	Rib Fat (mm)	Rump Fat (mm)	Retail Beef Yield %	Intra-Muscular Fat %
EBV	+4.6	+5	+24	+41	+58	+61		+36	+2.5	+0.9	+1.3	+0.1	+0.5
Acc	78%	47%	70%	70%	65%	52%		57%	48%	55%	55%	52%	46%

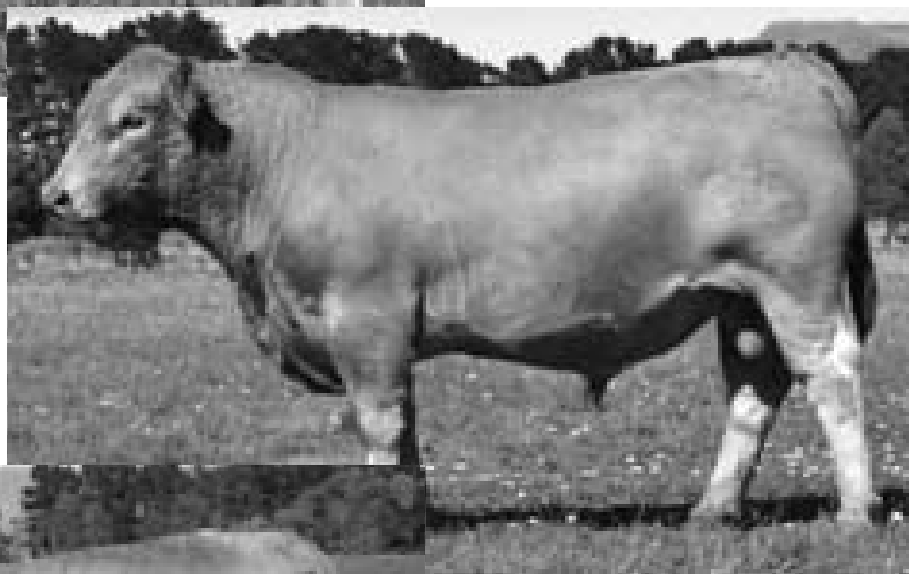
RAW DATA

Frame	Scrotal
5.4	

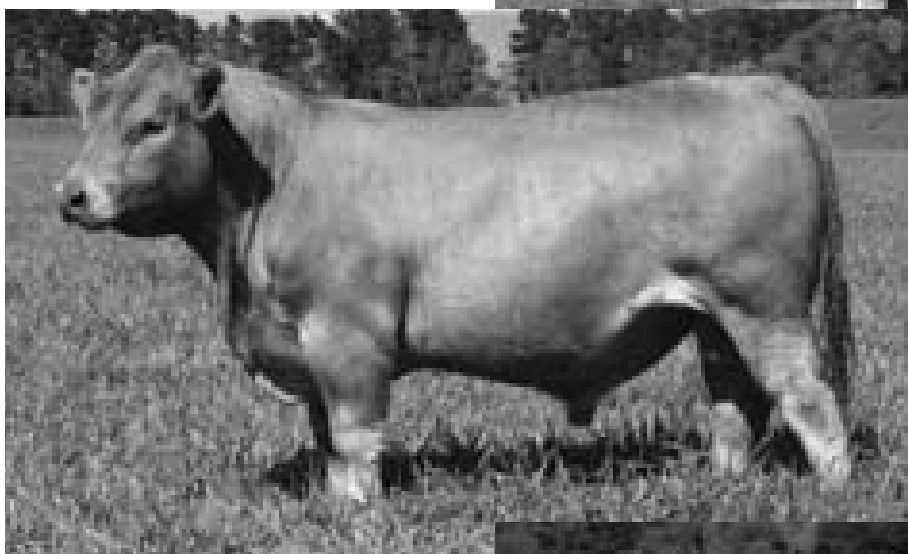
Purchaser: _____ \$ _____



Lot 5 Woodbourn Karoo K105



Lot 6 Woodbourn Kapaya K74



Lot 7 Woodbourn Kiln K51



Lot 8 Woodbourn Kilim K67

LOT 9 WOODBOURN KAYAK K101 (PB)

Born: 04/09/2014

Colour: Silver

Tattoo: 4W K101

Genetic Conditions: CAI AMU NHU

Sire: MELALEUCA GHANDI G112 (PB)

MONTEREY COUGAR C72 (PB)

MELALEUCA MINNOW Z95 (PB)

ONWARD JEREMIAH (PB)

Dam: WOODBOURN MISS AGNES G42 (PB)

WOODBOURN AGNES A44 (PB)

NOTES: One of the younger bulls in the sale. This very smooth, high growth and very high carcass figured bull would be good for all round production. Very good bone and stretch.

\$Index Values

Long Fed +\$43

Supermarket +\$55

Heavy Grass +\$79

February 2016 Murray Grey GROUP BREEDPLAN

	GROWTH AND MATERNAL						FERT	CARCASS					
	Birth Weight (kg)	Milk (kg)	200-Day Wt (kg)	400-Day Wt (kg)	600-Day Wt (kg)	Mature Cow Wt (kg)	Scrotal Size (cm)	Carcass Wt (kg)	EMA (sq cm)	Rib Fat (mm)	Rump Fat (mm)	Retail Beef Yield %	Intra-Muscular Fat %
EBV	+5.7	+5	+32	+56	+80	+82		+49	+2.6	-0.1	-0.1	+1.2	+0.0
Acc	78%	41%	70%	70%	66%	52%		58%	49%	58%	58%	54%	47%

RAW DATA

Frame	Scrotal
5.8	

Purchaser: _____ \$ _____

LOT 10 WOODBOURN KHAMAL K72 (PB)

Born: 13/09/2014

Colour: Silver

Tattoo: 4W K72

Genetic Conditions: CAI AMU NHU

Sire: WHEELVIEW FONZZIE (PB)

THE ULTIMATE CLASSIC (PB)

WHEELVIEW DORIS B30 (PB)

KELSO CRACKER C17 (GR2)

Dam: WOODBOURN MISS CHERRYBLOSSOM H31 (PB)

WOODBOURN CHERRY BLOSSOM C69 (PB)

NOTES: Out of a first calving heifer, this bull has extremely low birthweight, high growth and very high milk. He would be ideal for a self replacing herd. Note his smooth shoulders.

\$Index Values

Long Fed +\$41

Supermarket +\$36

Heavy Grass +\$53

February 2016 Murray Grey GROUP BREEDPLAN

	GROWTH AND MATERNAL						FERT	CARCASS					
	Birth Weight (kg)	Milk (kg)	200-Day Wt (kg)	400-Day Wt (kg)	600-Day Wt (kg)	Mature Cow Wt (kg)	Scrotal Size (cm)	Carcass Wt (kg)	EMA (sq cm)	Rib Fat (mm)	Rump Fat (mm)	Retail Beef Yield %	Intra-Muscular Fat %
EBV	+3.3	+9	+22	+37	+55	+60		+37	+1.6	-1.7	-2.3	+2.1	-0.6
Acc	76%	35%	67%	67%	64%	51%		55%	47%	56%	56%	52%	44%

RAW DATA

Frame	Scrotal
6	

Purchaser: _____ \$ _____

LOT 11 WOODBOURN KRONO K52 (PB)

Born: 28/08/2014

Colour: Grey

Tattoo: 4W K52

Genetic Conditions: CAI AMU NHU

Sire: WOODBOURN F18 HORNET (PB)

KELSO CRACKER C17 (GR2)

WOODBOURN MISS ROSIE C95 (PB)

GLENLIAM FARM XCHANGE X97 (PB)

Dam: WOODBOURN GRETEL B46 (PB)

WOODBOURN MISS GRETEL V81 (PB)

NOTES: A real meat machine; thick as a brick. He is long and smooth and moves well. Extremely low birth weight at 2.2, with high growth and milk.

\$Index Values

Long Fed +\$43

Supermarket +\$35

Heavy Grass +\$53

February 2016 Murray Grey GROUP BREEDPLAN

	GROWTH AND MATERNAL						FERT	CARCASS					
	Birth Weight (kg)	Milk (kg)	200-Day Wt (kg)	400-Day Wt (kg)	600-Day Wt (kg)	Mature Cow Wt (kg)	Scrotal Size (cm)	Carcass Wt (kg)	EMA (sq cm)	Rib Fat (mm)	Rump Fat (mm)	Retail Beef Yield %	Intra-Muscular Fat %
EBV	+2.2	+7	+25	+35	+55	+58		+37	+1.2	-0.8	-0.9	+1.0	+0.0
Acc	78%	41%	70%	70%	65%	51%		58%	48%	55%	55%	52%	46%

RAW DATA

Frame	Scrotal
5.6	

Purchaser: _____ \$ _____

LOT 12 WOODBOURN KRILL K87 (PB)

Born: 21/09/2014

Colour: Silver

Tattoo: 4W K87

Genetic Conditions: CAI AMU NHU

Sire: WOODBOURN F18 HORNET (PB)

KELSO CRACKER C17 (GR2)

WOODBOURN MISS ROSIE C95 (PB)

WOODBOURN ARIZONA T86 (PB)

Dam: WOODBOURN GRETEL X49 (PB)

WOODBOURN MISS GRETEL Q69 (PB)

NOTES: Very low birth weight in this younger bull, with high growth, breed average milk and great visual carcass. This bull is long and thick, without being excessive for heifer joining.

\$Index Values

Long Fed +\$43

Supermarket +\$41

Heavy Grass +\$55

February 2016 Murray Grey GROUP BREEDPLAN

	GROWTH AND MATERNAL						FERT	CARCASS					
	Birth Weight (kg)	Milk (kg)	200-Day Wt (kg)	400-Day Wt (kg)	600-Day Wt (kg)	Mature Cow Wt (kg)	Scrotal Size (cm)	Carcass Wt (kg)	EMA (sq cm)	Rib Fat (mm)	Rump Fat (mm)	Retail Beef Yield %	Intra-Muscular Fat %
EBV	+2.0	+8	+24	+42	+56	+59		+42	+1.8	-1.3	-1.8	+1.8	-0.5
Acc	78%	44%	71%	70%	66%	52%		58%	48%	56%	56%	52%	46%

RAW DATA

Frame	Scrotal
5.6	

Purchaser: _____ \$ _____



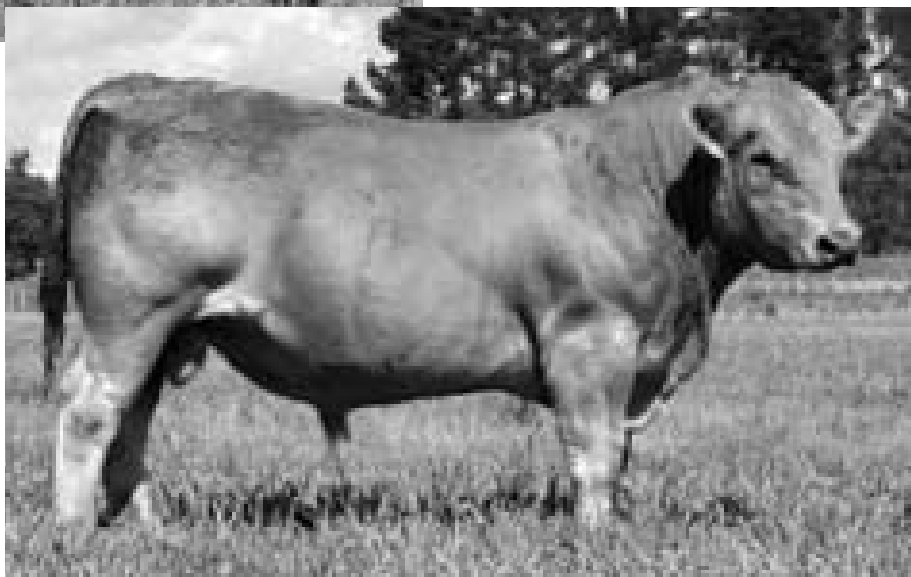
Lot 9 Woodbourn Kayak K101



Lot 10 Woodbourn Khamal K72



Lot 11 Woodbourn Krono K52



Lot 12 Woodbourn Krill K87

LOT 13 WOODBOURN KUBOTA K103 (GR2)

Born: 04/09/2014

Colour: Silver

Tattoo: 4W K103

Genetic Conditions: CAI AMU NHU

MELALEUCA ARTILLARY A16 (PB)
 Sire: **WOODBOURN EUREKA E86 (PB)**
 WOODBOURN PEGGY T42 (PB)
 WOODBOURN R40 (PB)
 Dam: **WOODBOURN GLORY U37 (GR1)**
 WOODBOURN 4W R13A (AA) (GR0)

NOTES: A bull ideal for heifer joining, out of an exceptional cow, held at Woodbourn for many many years. He is a very young sire with a very low birthweight and great outlook, length and capacity.

\$Index Values

Long Fed +\$30

Supermarket +\$34

Heavy Grass +\$46

February 2016 Murray Grey GROUP BREEDPLAN

	GROWTH AND MATERNAL						FERT	CARCASE					
	Birth Weight (kg)	Milk (kg)	200-Day Wt (kg)	400-Day Wt (kg)	600-Day Wt (kg)	Mature Cow Wt (kg)	Scrotal Size (cm)	Carcase Wt (kg)	EMA (sq cm)	Rib Fat (mm)	Rump Fat (mm)	Retail Beef Yield %	Intra-Muscular Fat %
EBV	+3.2	+4	+22	+34	+47								
Acc	78%	45%	65%	63%	61%								

RAW DATA

Frame	Scrotal
5.8	

Purchaser: _____ \$ _____

LOT 14 WOODBOURN KAPUT K25 (PB)

Born: 02/04/2014

Colour: Silver

Tattoo: 4W K25

Genetic Conditions: CAI AMU NHU

MELALEUCA ARTILLARY A16 (PB)
 Sire: **WOODBOURN EUREKA E86 (PB)**
 WOODBOURN PEGGY T42 (PB)
 WARROOK HASSETT Q10 (PB) (AI)
 Dam: **WOODBOURN SALLY D47 (PB)**
 WOODBOURN SALLY Y1 (PB)

NOTES: An excellent young two year old bull with outstanding figures. He is long and thick with great butt shape. His birthweight EBV is low at 3.7 (smooth shouldered for heifers), above average for growth, very high milk and exceptionally high EMA with positive fats. A great all round package.

\$Index Values

Long Fed +\$36

Supermarket +\$35

Heavy Grass +\$59

February 2016 Murray Grey GROUP BREEDPLAN

	GROWTH AND MATERNAL						FERT	CARCASE					
	Birth Weight (kg)	Milk (kg)	200-Day Wt (kg)	400-Day Wt (kg)	600-Day Wt (kg)	Mature Cow Wt (kg)	Scrotal Size (cm)	Carcase Wt (kg)	EMA (sq cm)	Rib Fat (mm)	Rump Fat (mm)	Retail Beef Yield %	Intra-Muscular Fat %
EBV	+3.7	+10	+24	+31	+51	+60		+31	+2.1	+1.6	+2.3	+0.0	+0.4
Acc	79%	46%	70%	72%	72%	59%		61%	52%	59%	59%	55%	49%

RAW DATA

Frame	Scrotal
5.8	

Purchaser: _____ \$ _____

LOT 15 WOODBOURN KHAN K6 (PB)

Born: 24/03/2014

Colour: Silver

Tattoo: 4W K6

Genetic Conditions: CAI AMU NHU

MONTEREY COUGAR C72 (PB)
 Sire: **MELALEUCA GHANDI G112 (PB)**
 MELALEUCA MINNOW Z95 (PB)
 BUNDALIER PAYDAY P43 (PB)
 Dam: **BYRONFIELD D4 (PB) (AI) (ET)**
 KYNWOOD SUSAN 994 (PB)

NOTES: Without a doubt, one of the picks of the sale team this year. This upstanding, stretchy, smooth bull is certainly one to look at. His moderate birth, very high growth, breed average milk, and very good carcass make him a winner, especially when you consider he was used over 30 females last year as a yearling. A top prospect.

\$Index Values

Long Fed +\$40

Supermarket +\$48

Heavy Grass +\$68

February 2016 Murray Grey GROUP BREEDPLAN

	GROWTH AND MATERNAL						FERT	CARCASE					
	Birth Weight (kg)	Milk (kg)	200-Day Wt (kg)	400-Day Wt (kg)	600-Day Wt (kg)	Mature Cow Wt (kg)	Scrotal Size (cm)	Carcase Wt (kg)	EMA (sq cm)	Rib Fat (mm)	Rump Fat (mm)	Retail Beef Yield %	Intra-Muscular Fat %
EBV	+4.2	+3	+28	+50	+70	+71	+1.4	+45	+1.9	-1.3	-1.8	+1.9	-0.5
Acc	77%	44%	68%	69%	69%	57%	50%	57%	40%	46%	46%	44%	40%

RAW DATA

Frame	Scrotal
6.5	

Purchaser: _____ \$ _____

LOT 16 WOODBOURN KUDU K7 (PB)

Born: 24/03/2014

Colour: Grey

Tattoo: 4W K7

Genetic Conditions: CAI AMU NHU

MONTEREY COUGAR C72 (PB)
 Sire: **MELALEUCA GHANDI G112 (PB)**
 MELALEUCA MINNOW Z95 (PB)
 WILTSHIRE XTRA SPECIAL (PB) (AI)
 Dam: **WOODBOURN SALLY A42 (PB)**
 WOODBOURN SALLY Y1 (PB)

NOTES: A stand out bull all the way through. His length, thickness and outlook have always been eye catching. I would suggest you get behind him to check his butt and thickness down his spine. Even though he is a little high in birth, he would be ideal for cow joinings. His growth, milk, EMA, and fats are outstanding. A top sire.

\$Index Values

Long Fed +\$36

Supermarket +\$49

Heavy Grass +\$71

February 2016 Murray Grey GROUP BREEDPLAN

	GROWTH AND MATERNAL						FERT	CARCASE					
	Birth Weight (kg)	Milk (kg)	200-Day Wt (kg)	400-Day Wt (kg)	600-Day Wt (kg)	Mature Cow Wt (kg)	Scrotal Size (cm)	Carcase Wt (kg)	EMA (sq cm)	Rib Fat (mm)	Rump Fat (mm)	Retail Beef Yield %	Intra-Muscular Fat %
EBV	+6.4	+5	+35	+57	+80	+81		+46	+1.5	+0.4	+0.6	+0.4	+0.2
Acc	78%	47%	69%	71%	71%	58%		60%	50%	57%	57%	54%	46%

RAW DATA

Frame	Scrotal
6.2	

Purchaser: _____ \$ _____



Lot 13 Woodbourn Kubota K103



Lot 14 Woodbourn Kaput K25



Lot 15 Woodbourn Khan K6



Lot 16 Woodbourn Kudoo K7

LOT 17 WOODBOURN KUDOS K31 (PB)

Born: 11/04/2014

Colour: Grey

Tattoo: 4W K31

Genetic Conditions: CAI AMU NHU

Sire: MELALEUCA GHANDI G112 (PB)

MONTEREY COUGAR C72 (PB)

MELALEUCA MINNOW Z95 (PB)

WOODBOURN TED-E-BEAR (PB)

Dam: WOODBOURN MISS JEANETTE D15 (PB)

NANGARA MISS JEANETTE 2ND (PB)

NOTES: Softness, length and smoothness are this bull's major attributes. Low birth would put this bull into a heifer joining category. He has a great outlook, tight sheath, and overall great appeal.

\$Index Values

Long Fed +\$29

Supermarket +\$37

Heavy Grass +\$51

February 2016 Murray Grey GROUP BREEDPLAN

	GROWTH AND MATERNAL						FERT	CARCASE					
	Birth Weight (kg)	Milk (kg)	200-Day Wt (kg)	400-Day Wt (kg)	600-Day Wt (kg)	Mature Cow Wt (kg)	Scrotal Size (cm)	Carcass Wt (kg)	EMA (sq cm)	Rib Fat (mm)	Rump Fat (mm)	Retail Beef Yield %	Intra-Muscular Fat %
EBV	+3.4	+2	+21	+35	+49	+45		+30	+1.5	-0.3	-0.3	+0.9	-0.2
Acc	78%	44%	68%	70%	70%	57%		59%	49%	56%	56%	53%	45%

RAW DATA

Frame	Scrotal
6.2	

Purchaser: _____ \$ _____

LOT 18 BIG PARK KARoola (PB) (AI)

Born: 22/03/2014

Colour: Silver

Tattoo: BPT K11

Genetic Conditions: CAF AMU NHU

Sire: THOLOGOLONG YALLANGATTA Y3 (PB)

ROBERN SYDNEY 2000 (PB) (AI) (ET)

THOLOGOLONG KAMBALA T9 (PB)

BUNDALÉER X ROAD X37 (PB)

Dam: WOODBOURN MISS Y BARBARA C10 (PB)

YAMBA BARBARA T30 (PB) (AI)

NOTES: This long smooth bull will certainly have a place in a commercial herd to produce replacement females.

\$Index Values

Long Fed +\$22

Supermarket +\$12

Heavy Grass +\$31

February 2016 Murray Grey GROUP BREEDPLAN

	GROWTH AND MATERNAL						FERT	CARCASE					
	Birth Weight (kg)	Milk (kg)	200-Day Wt (kg)	400-Day Wt (kg)	600-Day Wt (kg)	Mature Cow Wt (kg)	Scrotal Size (cm)	Carcass Wt (kg)	EMA (sq cm)	Rib Fat (mm)	Rump Fat (mm)	Retail Beef Yield %	Intra-Muscular Fat %
EBV	+4.0	+4	+21	+25	+44	+52		+22	+0.7	-0.4	-0.5	+0.6	-0.2
Acc	64%	52%	65%	68%	68%	58%		58%	43%	51%	51%	47%	40%

RAW DATA

Frame	Scrotal
5.8	

Purchaser: _____ \$ _____

LOT 19 BIG PARK KNOPWOOD K27 (PB)

Born: 02/05/2014

Colour: Silver

Tattoo: BPT K27

Genetic Conditions: CAU AMU NHU

Sire: WOODBOURN FRANCO F17 (PB)

MELALEUCA ARTILLARY A16 (PB)

WOODBOURN REGINA A53 (PB)

THOLOGOLONG YALLANGATTA Y3 (PB)

Dam: BIG PARK PASQUALE D16 (PB)

BIG PARK PASCALE X7 (PB)

NOTES: Another of those stretchy, smooth bulls. Great butt shape, bone and outlook.

\$Index Values

Long Fed +\$36

Supermarket +\$34

Heavy Grass +\$51

February 2016 Murray Grey GROUP BREEDPLAN

	GROWTH AND MATERNAL						FERT	CARCASE					
	Birth Weight (kg)	Milk (kg)	200-Day Wt (kg)	400-Day Wt (kg)	600-Day Wt (kg)	Mature Cow Wt (kg)	Scrotal Size (cm)	Carcass Wt (kg)	EMA (sq cm)	Rib Fat (mm)	Rump Fat (mm)	Retail Beef Yield %	Intra-Muscular Fat %
EBV	+4.3	+2	+25	+39	+58	+58		+37	+2.2	-0.9	-1.1	+1.5	-0.1
Acc	61%	41%	60%	65%	66%	57%		55%	42%	49%	49%	45%	36%

RAW DATA

Frame	Scrotal
6.4	

Purchaser: _____ \$ _____

LOT 20 BIG PARK KEMPTON (PB) (AI)

Born: 26/03/2014

Colour: Grey

Tattoo: BPT K16

Genetic Conditions: CAF AMU NHU

Sire: THOLOGOLONG YALLANGATTA Y3 (PB)

ROBERN SYDNEY 2000 (PB) (AI) (ET)

THOLOGOLONG KAMBALA T9 (PB)

WOODBOURN RISING STAR W13 (PB)

Dam: BIG PARK THETIS Z69 (PB)

WAVERLEY THETIS 2 (PB)

NOTES: Check this bull for visual muscle and smoothness. Very low birth with positive fat EBV's. He has a great butt and indeed, tremendous overall muscle development.

\$Index Values

Long Fed +\$28

Supermarket +\$23

Heavy Grass +\$33

February 2016 Murray Grey GROUP BREEDPLAN

	GROWTH AND MATERNAL						FERT	CARCASE					
	Birth Weight (kg)	Milk (kg)	200-Day Wt (kg)	400-Day Wt (kg)	600-Day Wt (kg)	Mature Cow Wt (kg)	Scrotal Size (cm)	Carcass Wt (kg)	EMA (sq cm)	Rib Fat (mm)	Rump Fat (mm)	Retail Beef Yield %	Intra-Muscular Fat %
EBV	+3.3	+5	+20	+26	+34	+34		+22	+0.8	+0.1	+0.3	+0.6	-0.3
Acc	66%	52%	65%	68%	69%	59%		58%	39%	46%	46%	43%	34%

RAW DATA

Frame	Scrotal
5.2	

Purchaser: _____ \$ _____



Lot 17 Woodbourn Kudos K31



Lot 18 Big Park Karoola K11



Lot 19 Big Park Knopwood K27



Lot 20 Big Park Kempton K16

LOT 21 WOODBOURN KEYMAN K32 (PB)

Born: 11/04/2014

Colour: Grey

Tattoo: 4W K32

Genetic Conditions: CAI AMU NHU

Sire: MELALEUCA GHANDI G112 (PB)

MONTEREY COUGAR C72 (PB)

MELALEUCA MINNOW Z95 (PB)

Dam: WOODBOURN MISS BARBARA E3 (PB)

MELALEUCA ARTILLARY A16 (PB)

WOODBOURN MISS BARBARA Z41 (PB)

NOTES: Commercial bull. This bull has appealed to everyone who has seen him. His overall length, depth and hind quarter are outstanding. He has a great sire's outlook and parades himself well. We would like to have retained this bull for our own use but unfortunately, after DNA testing to many sires, we could not find a match. However, we are continuing to test for a sire match and if successful will be stated on the supp sheet. We consider this bull, even though he is a commercial bull, to be out of the top drawer. For those interested, go to the Murray Grey website and look up his dam's figures under 4W E3, exceptional numbers.

\$Index Values

Long Fed +\$49

Supermarket +\$61

Heavy Grass +\$85

February 2016 Murray Grey GROUP BREEDPLAN

	GROWTH AND MATERNAL						FERT	CARCASE					
	Birth Weight (kg)	Milk (kg)	200-Day Wt (kg)	400-Day Wt (kg)	600-Day Wt (kg)	Mature Cow Wt (kg)	Scrotal Size (cm)	Carcase Wt (kg)	EMA (sq cm)	Rib Fat (mm)	Rump Fat (mm)	Retail Beef Yield %	Intra-Muscular Fat %
EBV	+6.3	+2	+38	+65	+88	+89	+1.4	+57	+2.7	-0.3	-0.3	+1.5	-0.1
Acc	78%	44%	69%	71%	71%	58%	50%	60%	51%	60%	60%	56%	49%

RAW DATA

Frame	Scrotal
5.6	

Purchaser: _____ \$ _____

LOT 22 WOODBOURN KANGA K11 (PB)

Born: 26/03/2014

Colour: Silver

Tattoo: 4W K11

Genetic Conditions: CAI AMU NHU

Sire: MELALEUCA GHANDI G112 (PB)

MONTEREY COUGAR C72 (PB)

MELALEUCA MINNOW Z95 (PB)

Dam: WOODBOURN MISS JEANETTE X10 (PB)

MONTEREY TALENT SCOUT (PB)

WOODBOURN MISS JEANETTE S36 (PB)

NOTES: This bull certainly appeals with his softness and doing ability. Very positive fats and good IMF EBV, make this very deep, long, smooth bull one to look at closely. Out of one of my favourite old cows, 4W X10, who has been at Woodbourn for many many years.

\$Index Values

Long Fed +\$25

Supermarket +\$30

Heavy Grass +\$53

February 2016 Murray Grey GROUP BREEDPLAN

	GROWTH AND MATERNAL						FERT	CARCASE					
	Birth Weight (kg)	Milk (kg)	200-Day Wt (kg)	400-Day Wt (kg)	600-Day Wt (kg)	Mature Cow Wt (kg)	Scrotal Size (cm)	Carcase Wt (kg)	EMA (sq cm)	Rib Fat (mm)	Rump Fat (mm)	Retail Beef Yield %	Intra-Muscular Fat %
EBV	+4.9	+2	+25	+34	+56	+58	+1.0	+27	+0.5	+0.7	+1.1	+0.0	+0.1
Acc	79%	49%	70%	71%	72%	59%	51%	61%	51%	59%	59%	55%	48%

RAW DATA

Frame	Scrotal
5.5	

Purchaser: _____ \$ _____

LOT 23 BIG PARK KAYCEE (PB)

Born: 31/03/2014

Colour: Grey

Tattoo: BPT K19

Genetic Conditions: CAU AMU NHU

Sire: BIG PARK GEE WHIZ G14 (PB)

ONWARD JEREMIAH (PB)

BIG PARK BRILLO D14 (BF)

Dam: BIG PARK VITELLO D22 (PB)

THOLOGOLONG YALLANGATTA Y3 (PB)

BIG PARK VITELLO V45 (PB)

NOTES: Ideal for heifer joining with extremely low birthweight and smoothness, this easy doing bull has a great combination of softness and shape.

\$Index Values

Long Fed +\$17

Supermarket +\$10

Heavy Grass +\$33

February 2016 Murray Grey GROUP BREEDPLAN

	GROWTH AND MATERNAL						FERT	CARCASE					
	Birth Weight (kg)	Milk (kg)	200-Day Wt (kg)	400-Day Wt (kg)	600-Day Wt (kg)	Mature Cow Wt (kg)	Scrotal Size (cm)	Carcase Wt (kg)	EMA (sq cm)	Rib Fat (mm)	Rump Fat (mm)	Retail Beef Yield %	Intra-Muscular Fat %
EBV	+2.0	+7	+14	+16	+37	+60		+20	+0.5	+0.4	+0.7	-0.1	+0.2
Acc	60%	41%	61%	66%	67%	57%		56%	39%	47%	47%	43%	34%

RAW DATA

Frame	Scrotal
6	

Purchaser: _____ \$ _____

LOT 24 WOODBOURN KOOLAH K14 (PB)

Born: 27/03/2014

Colour: Silver

Tattoo: 4W K14

Genetic Conditions: CAI AMU NHU

Sire: MELALEUCA GHANDI G112 (PB)

MONTEREY COUGAR C72 (PB)

MELALEUCA MINNOW Z95 (PB)

Dam: WOODBOURN MISS SYLVIA Z38 (PB)

WOODBOURN TED-E-BEAR (PB)

SPRINGFIELD PARK SYLVIA 2 Q10 (PB)

NOTES: A long smooth bull with good butt development. He has a tight sheath and a good spread of figures.

\$Index Values

Long Fed +\$28

Supermarket +\$34

Heavy Grass +\$50

February 2016 Murray Grey GROUP BREEDPLAN

	GROWTH AND MATERNAL						FERT	CARCASE					
	Birth Weight (kg)	Milk (kg)	200-Day Wt (kg)	400-Day Wt (kg)	600-Day Wt (kg)	Mature Cow Wt (kg)	Scrotal Size (cm)	Carcase Wt (kg)	EMA (sq cm)	Rib Fat (mm)	Rump Fat (mm)	Retail Beef Yield %	Intra-Muscular Fat %
EBV	+4.5	+2	+22	+33	+51	+46		+29	+1.9	-0.5	-0.7	+1.2	-0.1
Acc	78%	46%	69%	71%	71%	58%		60%	50%	57%	57%	53%	46%

RAW DATA

Frame	Scrotal
5.4	

Purchaser: _____ \$ _____



Lot 21 Woodbourn Keyman K32



Lot 22 Woodbourn Kanga K11



Lot 23 Big Park Kaycee K19



Lot 24 Woodbourn Koolah K14

LOT 25 WOODBOURN KHAKI K18 (PB)

Born: 29/03/2014

Colour: Grey

Tattoo: 4W K18

Genetic Conditions: CAI AMU NHU

Sire: MELALEUCA GHANDI G112 (PB)

MONTEREY COUGAR C72 (PB)
MELALEUCA MINNOW Z95 (PB)

Dam: WOODBOURN HEATHER E62 (PB)

MONTEREY TALENT SCOUT A316 (PB) (ET)
WOODBOURN MISS HEATHER Y6 (PB)**NOTES:** A beautifully balanced bull who takes your eye first up. He displays great softness, length and smoothness all the way, as well as very good obvious muscle pattern and butt development. Very good all round figures.**\$Index Values**

Long Fed +\$37

Supermarket +\$41

Heavy Grass +\$57

February 2016 Murray Grey GROUP BREEDPLAN

	GROWTH AND MATERNAL						FERT	CARCASE					
	Birth Weight (kg)	Milk (kg)	200-Day Wt (kg)	400-Day Wt (kg)	600-Day Wt (kg)	Mature Cow Wt (kg)	Scrotal Size (cm)	Carcass Wt (kg)	EMA (sq cm)	Rib Fat (mm)	Rump Fat (mm)	Retail Beef Yield %	Intra-Muscular Fat %
EBV	+3.9	+6	+28	+40	+56	+53	+0.9	+34	+1.2	-0.1	-0.1	+0.9	-0.2
Acc	78%	43%	69%	71%	71%	58%	51%	61%	51%	60%	60%	56%	49%

RAW DATA

Frame	Scrotal
5.4	

Purchaser: _____ \$ _____

LOT 26 WOODBOURN KIRK K117 (PB)

Born: 18/10/2014

Colour: Silver

Tattoo: 4W K117

Genetic Conditions: CAI AMU NHU

Sire: WOODBOURN GALAXY G107 (PB)

MELALEUCA ARTILLARY A16 (PB)
WOODBOURN PEGGY T42 (PB)

Dam: WOODBOURN MISS JEANETTE E5 (PB)

WOODBOURN WARRIOR B48 (PB)
WOODBOURN MISS JEANETTE X10 (PB)**NOTES:** This very very smooth young bull would be ideal for heifer joining, even though he is above average for birth. His outstanding figures, with positive fats and his great visual butt appeal, should attract considerable interest. He is one of those "wow, look at me bulls".**\$Index Values**

Long Fed +\$33

Supermarket +\$35

Heavy Grass +\$53

February 2016 Murray Grey GROUP BREEDPLAN

	GROWTH AND MATERNAL						FERT	CARCASE					
	Birth Weight (kg)	Milk (kg)	200-Day Wt (kg)	400-Day Wt (kg)	600-Day Wt (kg)	Mature Cow Wt (kg)	Scrotal Size (cm)	Carcass Wt (kg)	EMA (sq cm)	Rib Fat (mm)	Rump Fat (mm)	Retail Beef Yield %	Intra-Muscular Fat %
EBV	+4.6	+8	+29	+41	+62	+63		+37	+1.4	+0.0	+0.0	+0.6	+0.2
Acc	76%	44%	68%	68%	64%	52%		56%	48%	56%	56%	52%	46%

RAW DATA

Frame	Scrotal
6.2	

Purchaser: _____ \$ _____

LOT 27 WOODBOURN KOHL K55 (PB)

Born: 31/08/2014

Colour: Grey

Tattoo: 4W K55

Genetic Conditions: CAI AMU NHU

Sire: AYR PARK HIPSTER H64 (GR2)

THE GLEN BASS F104 (GR1)
AYR PARK KATRINA E32 (PB) (AI)

Dam: WOODBOURN JEANETTE H32 (PB)

NAWARRA BANANA BENDER (PB)
WOODBOURN MISS JEANETTE B37 (PB)**NOTES:** A heifer's first calf with exceptionally low birth weight. Add this to his overall smoothness in the front end and he would be ideal for those herds joining slightly smaller heifers. The major bonus with this bull, is his EMA and very very high fat scores. For those with a tendency to breed raw cattle, this might be the bull to soften them up.**\$Index Values**

Long Fed +\$25

Supermarket +\$30

Heavy Grass +\$46

February 2016 Murray Grey GROUP BREEDPLAN

	GROWTH AND MATERNAL						FERT	CARCASE					
	Birth Weight (kg)	Milk (kg)	200-Day Wt (kg)	400-Day Wt (kg)	600-Day Wt (kg)	Mature Cow Wt (kg)	Scrotal Size (cm)	Carcass Wt (kg)	EMA (sq cm)	Rib Fat (mm)	Rump Fat (mm)	Retail Beef Yield %	Intra-Muscular Fat %
EBV	+1.5		+15	+21	+35			+20	+1.4	+1.7	+2.4	-0.7	+0.6
Acc	75%		65%	65%	61%			52%	44%	52%	52%	48%	40%

RAW DATA

Frame	Scrotal
5.2	

Purchaser: _____ \$ _____

LOT 28 WOODBOURN KANGAROO K43 (PB)

Born: 19/08/2014

Colour: Grey

Tattoo: 4W K43

Genetic Conditions: CAI AMU NHU

Sire: WOODBOURN F18 HORNET (PB)

KELSO CRACKER C17 (GR2)
WOODBOURN MISS ROSIE C95 (PB)

Dam: WOODBOURN AGNES T16 (PB)

NEWFIELDS VO ROUGE (PB)
WOODBOURN MISS AGNES 771 (PB)**NOTES:** One of the few bulls in the sale by Woodbourn Hornet F18 and out of one of the best old cows we have bred. Exceptionally low birth weight and smooth front end, make this bull ideal for heifer joining. With above breed average growth numbers and +12 for milk (4 times breed average), I would expect this bull to be ideal for breeding replacement heifers.**\$Index Values**

Long Fed +\$45

Supermarket +\$42

Heavy Grass +\$61

February 2016 Murray Grey GROUP BREEDPLAN

	GROWTH AND MATERNAL						FERT	CARCASE					
	Birth Weight (kg)	Milk (kg)	200-Day Wt (kg)	400-Day Wt (kg)	600-Day Wt (kg)	Mature Cow Wt (kg)	Scrotal Size (cm)	Carcass Wt (kg)	EMA (sq cm)	Rib Fat (mm)	Rump Fat (mm)	Retail Beef Yield %	Intra-Muscular Fat %
EBV	+2.0	+12	+22	+37	+55	+64		+39	+1.9	-0.8	-1.0	+1.5	-0.4
Acc	78%	46%	71%	71%	67%	54%		60%	50%	58%	58%	55%	48%

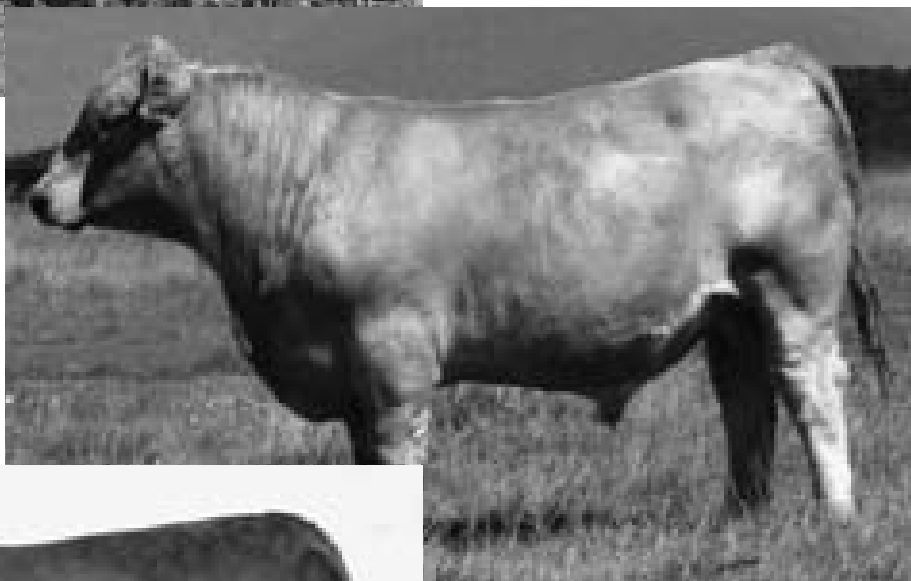
RAW DATA

Frame	Scrotal
4.8	

Purchaser: _____ \$ _____



Lot 25 Woodbourn Khaki K18



Lot 26 Woodbourn Kirk K117



Lot 27 Woodbourn Kohl K55



Lot 28 Woodbourn Kangaroo K43

LOT 29 WOODBOURN KINGPIN K111 (PB)

Born: 14/10/2014

Colour: Grey

Tattoo: 4W K111

Genetic Conditions: CAI AMU NHU

Sire: MELALEUCA GHANDI G112 (PB)

MONTEREY COUGAR C72 (PB)
MELALEUCA MINNOW Z95 (PB)**NOTES:** A lovely mid grey colour and displaying great jump muscle development. Well above average in index figures and growth.

Dam: WOODBOURN PENELOPE G115 (PB)

KELSO CRACKER C17 (GR2)
SILVERGUMS PENELOPE Y43 (PB)

\$Index Values

Long Fed +\$37

Supermarket +\$43

Heavy Grass +\$66

February 2016 Murray Grey GROUP BREEDPLAN

	GROWTH AND MATERNAL						FERT	CARCASE					
	Birth Weight (kg)	Milk (kg)	200-Day Wt (kg)	400-Day Wt (kg)	600-Day Wt (kg)	Mature Cow Wt (kg)	Scrotal Size (cm)	Carcass Wt (kg)	EMA (sq cm)	Rib Fat (mm)	Rump Fat (mm)	Retail Beef Yield %	Intra-Muscular Fat %
EBV	+5.0	+6	+28	+46	+70	+73	+1.6	+41	+1.6	-0.4	-0.4	+1.0	-0.2
Acc	77%	39%	69%	69%	65%	51%	50%	57%	49%	57%	57%	54%	47%

RAW DATA

Frame	Scrotal
5.4	

Purchaser: _____ \$ _____

LOT 30 WOODBOURN KAZOO K64 (PB)

Born: 09/04/2014

Colour: Grey

Tattoo: 4W K64

Genetic Conditions: CAI AMU NHU

Sire: AYR PARK HIPSTER H64 (GR2)

THE GLEN BASS F104 (GR1)
AYR PARK KATRINA E32 (PB) (AI)**NOTES:** Out of a first calving heifer, this bull with his smoothness in his front end, would be suitable for heifer joining. He has a very good EMA and positive fat EBV's, which are evident visually in his softness and butt profile.

Dam: WOODBOURN BARBARA H64 (PB)

WOODBOURN F18 HORNET (PB)
WOODBOURN BARBARA A49 (PB)

\$Index Values

Long Fed +\$33

Supermarket +\$38

Heavy Grass +\$58

February 2016 Murray Grey GROUP BREEDPLAN

	GROWTH AND MATERNAL						FERT	CARCASE					
	Birth Weight (kg)	Milk (kg)	200-Day Wt (kg)	400-Day Wt (kg)	600-Day Wt (kg)	Mature Cow Wt (kg)	Scrotal Size (cm)	Carcass Wt (kg)	EMA (sq cm)	Rib Fat (mm)	Rump Fat (mm)	Retail Beef Yield %	Intra-Muscular Fat %
EBV	+4.9		+28	+43	+64				+2.0	+0.4	+0.6	+0.4	+0.2
Acc	72%		59%	56%	54%				34%	42%	42%	38%	35%

RAW DATA

Frame	Scrotal
5	

Purchaser: _____ \$ _____

LOT 31 WOODBOURN KAISER K115 (PB)

Born: 17/10/2014

Colour: Silver

Tattoo: 4W K115

Genetic Conditions: CAI AMU NHU

Sire: MELALEUCA GHANDI G112 (PB)

MONTEREY COUGAR C72 (PB)
MELALEUCA MINNOW Z95 (PB)
WOODBOURN REALLY WICKED D75 (PB)**NOTES:** One of the youngest bulls in the offering, a fact which should be considered when comparing this bull with the others. Moderate birth and very high growth, his breed average milk and above average EMA, puts this bull in the high end of the catalogue, figures wise.

Dam: WOODBOURN MISS BARBARA G73 (PB)

WOODBOURN MISS BARBARA E3 (PB)

\$Index Values

Long Fed +\$40

Supermarket +\$48

Heavy Grass +\$67

February 2016 Murray Grey GROUP BREEDPLAN

	GROWTH AND MATERNAL						FERT	CARCASE					
	Birth Weight (kg)	Milk (kg)	200-Day Wt (kg)	400-Day Wt (kg)	600-Day Wt (kg)	Mature Cow Wt (kg)	Scrotal Size (cm)	Carcass Wt (kg)	EMA (sq cm)	Rib Fat (mm)	Rump Fat (mm)	Retail Beef Yield %	Intra-Muscular Fat %
EBV	+4.7	+2	+29	+51	+71	+72		+44	+1.6	-0.7	-0.9	+1.2	-0.2
Acc	76%	40%	68%	69%	64%	51%		57%	49%	58%	58%	54%	47%

RAW DATA

Frame	Scrotal
6	

Purchaser: _____ \$ _____

LOT 32 WOODBOURN KNOCKOUT K75 (PB)

Born: 13/09/2014

Colour: Silver

Tattoo: 4W K75

Genetic Conditions: CAI AMU NHU

Sire: MELALEUCA GHANDI G112 (PB)

MONTEREY COUGAR C72 (PB)
MELALEUCA MINNOW Z95 (PB)**NOTES:** Although this bull is not the largest, he certainly has qualities to produce very sound vealers. Very high growth and carcass numbers would certainly be advantageous for vealer production. Check his outstanding index figures.

Dam: WOODBOURN MISS CARRIE G133 (PB)

MELALEUCA ARTILLARY A16 (PB)
WOODBOURN MISS CARRIE Z85 (PB)

\$Index Values

Long Fed +\$43

Supermarket +\$47

Heavy Grass +\$70

February 2016 Murray Grey GROUP BREEDPLAN

	GROWTH AND MATERNAL						FERT	CARCASE					
	Birth Weight (kg)	Milk (kg)	200-Day Wt (kg)	400-Day Wt (kg)	600-Day Wt (kg)	Mature Cow Wt (kg)	Scrotal Size (cm)	Carcass Wt (kg)	EMA (sq cm)	Rib Fat (mm)	Rump Fat (mm)	Retail Beef Yield %	Intra-Muscular Fat %
EBV	+5.5	+2	+33	+50	+73	+75	+1.0	+45	+2.2	-0.4	-0.4	+1.4	-0.1
Acc	77%	42%	69%	69%	65%	51%	50%	57%	49%	56%	56%	53%	46%

RAW DATA

Frame	Scrotal
4.8	

Purchaser: _____ \$ _____



Lot 29 Woodbourn Kingpin K111



Lot 30 Woodbourn Kazoo K64



Lot 32 Woodbourn Knockout K75

12 Mature Stud Females

LOT 33 BIG PARK CATERINA B24 (PB)

Born: 16/03/2006

Colour: Silver

Tattoo: B24

Genetic Conditions: CAU AMU NHU

Sire: THOLOGOLONG YALLANGATTA Y3 (PB)
THOLOGOLONG KAMBALA T9 (PB)

Dam: BIG PARK CATERINA (PB)
WAVERLEY CYPRIS 3 (PB)

NOTES: An extremely thick cow with great capacity. A very sound female. Low birthweight EBV's with a breed average milk figure. Joined to Ayr Park Jordan J12 from 09/06/2015 until 30/07/2015. **PTIC**

\$Index Values

Long Fed +\$26

Supermarket +\$11

Heavy Grass +\$30

February 2016 Murray Grey GROUP BREEDPLAN

	GROWTH AND MATERNAL						FERT	CARCASE					
	Birth Weight (kg)	Milk (kg)	200-Day Wt (kg)	400-Day Wt (kg)	600-Day Wt (kg)	Mature Cow Wt (kg)	Scrotal Size (cm)	Carcass Wt (kg)	EMA (sq cm)	Rib Fat (mm)	Rump Fat (mm)	Retail Beef Yield %	Intra-Muscular Fat %
EBV	+2.2	+2	+15	+17	+32	+45		+19					
Acc	83%	68%	76%	75%	75%	65%		63%					

Purchaser: _____ \$ _____

LOT 34 WOODBOURN MISSHAMBERSPRIDE H87 (PB)

Born: 29/08/2012

Colour: Silver

Tattoo: H87

Genetic Conditions: CAI AMU NHU

Sire: KELSO CRACKER C17 (GR2)
LINDSAY DONNA Z13 (CM)

Dam: WOODBOURN HAMBERS PRIDE C75 (PB)
WOODBOURN MISS HAMBERS PRIDE (PB)

NOTES: A very well put together young cow with very good stretch and lift. Her calf at foot should be a real winner by the large grey sire Melaleuca Jackhammer. She has absolutely outstanding figures in all boxes.. Joined to Melaleuca Jackhammer J115 from 09/06/2015 until 30/07/2015. **PTIC**

\$Index Values

Long Fed +\$41

Supermarket +\$39

Heavy Grass +\$65

February 2016 Murray Grey GROUP BREEDPLAN

	GROWTH AND MATERNAL						FERT	CARCASE					
	Birth Weight (kg)	Milk (kg)	200-Day Wt (kg)	400-Day Wt (kg)	600-Day Wt (kg)	Mature Cow Wt (kg)	Scrotal Size (cm)	Carcass Wt (kg)	EMA (sq cm)	Rib Fat (mm)	Rump Fat (mm)	Retail Beef Yield %	Intra-Muscular Fat %
EBV	+5.1	+10	+32	+53	+81	+90		+50	+2.1	-1.7	-2.2	+2.1	-0.5
Acc	79%	47%	72%	71%	72%	61%		61%	49%	65%	65%	59%	55%

Purchaser: _____ \$ _____

LOT 35 WOODBOURN MISS JEANETTE D37 (PB)

Born: 29/07/2008

Colour: Silver

Tattoo: D37

Genetic Conditions: CAF AMU NHU

Sire: MONTEREY TALENT SCOUT A316 (PB) (ET)
MONTEREY MISS MAGNOLIA Y16 (PB) (AI) (ET)

Dam: WOODBOURN MISS JEANETTE W59 (PB)
WOODBOURN JEANETTE P86 (GR1)

NOTES: They don't come any better than this cow. Identical to the outstanding cow sold at last year's sale. Length, depth, capacity and femininity are her outstanding attributes, on sound feet and legs. Reluctantly we are offering her. Joined to Jackhammer we would be amazed if her calf is not a winner. Similar to Lot 2, her figures are outstanding, with the addition of positive fats. Joined to Melaleuca Jackhammer J115 from 09/06/2015 until 30/07/2015. **PTIC**

\$Index Values

Long Fed +\$42

Supermarket +\$39

Heavy Grass +\$59

February 2016 Murray Grey GROUP BREEDPLAN

	GROWTH AND MATERNAL						FERT	CARCASE					
	Birth Weight (kg)	Milk (kg)	200-Day Wt (kg)	400-Day Wt (kg)	600-Day Wt (kg)	Mature Cow Wt (kg)	Scrotal Size (cm)	Carcass Wt (kg)	EMA (sq cm)	Rib Fat (mm)	Rump Fat (mm)	Retail Beef Yield %	Intra-Muscular Fat %
EBV	+5.1	+9	+34	+45	+65	+68		+37	+0.8	+0.3	+0.4	+0.3	+0.0
Acc	82%	62%	75%	74%	72%	61%		63%	47%	56%	55%	52%	48%

Purchaser: _____ \$ _____

LOT 36 BYRONFIELD E6 (PB) (AI)

Born: 11/01/2009

Colour: Silver

Tattoo: E6

Genetic Conditions: CAF AMU NHU

Sire: WOODBOURN CHEYENNE T40 (PB)
WOODBOURN SALLY Q35 (PB)

Dam: BYRONFIELD (PB)
WOODBOURN MISS BARBARA U29 (PB)

NOTES: Great capacity and depth. Again a female with outstanding growth, milk and carcass numbers. Joined to a large framed bull, her calf should grow on to bigger things. It is very hard to find these cows with high growth, three times breed average milk and exceptional carcass. Joined to Melaleuca Jackhammer J115 from 09/06/2015 until 30/07/2015. **PTIC**

\$Index Values

Long Fed +\$47

Supermarket +\$41

Heavy Grass +\$64

February 2016 Murray Grey GROUP BREEDPLAN

	GROWTH AND MATERNAL						FERT	CARCASE					
	Birth Weight (kg)	Milk (kg)	200-Day Wt (kg)	400-Day Wt (kg)	600-Day Wt (kg)	Mature Cow Wt (kg)	Scrotal Size (cm)	Carcass Wt (kg)	EMA (sq cm)	Rib Fat (mm)	Rump Fat (mm)	Retail Beef Yield %	Intra-Muscular Fat %
EBV	+6.7	+10	+36	+54	+78	+84		+49	+2.6	-1.8	-2.4	+2.5	-0.7
Acc	78%	64%	73%	68%	70%	59%		58%	44%	54%	54%	50%	47%

Postscript.

Grey male calf at foot, Woodbourn Magnet M12, born 28/03/2016, tattoo 4W M12, sire Melaleuca Jackhammer J115.

Purchaser: _____ \$ _____



Lot 33 Big Park Caterina B24 prior to calving before the sale



Lot 35 Woodbourn Miss Jeanette D37 prior to calving before the sale



Lot 36 Byronfield E6 with calf at foot, born the day before printing

LOT 37 BIG PARK WILMA E24 (PB)

Born: 27/03/2009

Colour: Silver

Tattoo: E24

Genetic Conditions: CAU AMU NHU

ROBERN SYDNEY 2000 (PB) (AI) (ET)
 Sire: **THOLOGOLONG YALLANGATTA Y3 (PB)**
 THOLOGOLONG KAMBALA T9 (PB)
 REDAWAYS SHINDIG (PB)
 Dam: **KYNWOOD WILMA 101 (PB)**
 KYNWOOD WILMA 925 (PB)

NOTES: A great testament to the breeding of the Big Park cattle. The length, depth and capacity of this cow are exceptional. Very similar to the first female lot offered, in all respects. Low birth, moderate growth with very good milk figures. A fine matron.. Joined to Melaleuca Jackhammer J115 from 09/06/2015 until 30/07/2015. **PTIC**

\$Index Values

Long Fed +\$27

Supermarket +\$19

Heavy Grass +\$40

February 2016 Murray Grey GROUP BREEDPLAN

	GROWTH AND MATERNAL						FERT	CARCASE					
	Birth Weight (kg)	Milk (kg)	200-Day Wt (kg)	400-Day Wt (kg)	600-Day Wt (kg)	Mature Cow Wt (kg)	Scrotal Size (cm)	Carcase Wt (kg)	EMA (sq cm)	Rib Fat (mm)	Rump Fat (mm)	Retail Beef Yield %	Intra-Muscular Fat %
EBV	+3.8	+5	+19	+30	+48	+66		+27					
Acc	81%	65%	75%	72%	72%	71%		59%					

Purchaser: _____ \$ _____

LOT 38 WOODBOURN MISS GRETEL Z34 (PB)

Born: 13/08/2004

Colour: Silver

Tattoo: Z34

Genetic Conditions: CAF AMU NHU

ORCADIA PARK CENTURY (PB)
 Sire: **WARROOK HASSETT Q10 (PB) (AI)**
 WARROOK BETTY L31 (PB)
 MONTEREY TALENT SCOUT (PB)
 Dam: **WOODBOURN MISS GRETEL W108 (PB)**
 WOODBOURN MISS GRETEL Q98 (PB)

NOTES: What a great cow Z34 is, who has been at Woodbourn for many years. Still as sound as a bell on feet and legs. A very feminine cow that has length and thickness and femininity. At only eleven years of age, she has many more calves to come. Her growth and carcass figures are outstanding; and at +11 for milk, they done come much better. Joined to Woodbourn Hornet F18 from 09/06/2015 until 30/07/2015. **PTIC**.

\$Index Values

Long Fed +\$33

Supermarket +\$37

Heavy Grass +\$56

February 2016 Murray Grey GROUP BREEDPLAN

	GROWTH AND MATERNAL						FERT	CARCASE					
	Birth Weight (kg)	Milk (kg)	200-Day Wt (kg)	400-Day Wt (kg)	600-Day Wt (kg)	Mature Cow Wt (kg)	Scrotal Size (cm)	Carcase Wt (kg)	EMA (sq cm)	Rib Fat (mm)	Rump Fat (mm)	Retail Beef Yield %	Intra-Muscular Fat %
EBV	+6.2	+11	+31	+51	+74	+77	+0.6	+41	+1.0	-0.8	-0.9	+1.0	-0.2
Acc	84%	66%	78%	77%	77%	67%	55%	67%	52%	59%	59%	56%	54%

Purchaser: _____ \$ _____

LOT 39 WOODBOURN MISS BARBARA G73 (PB)

Born: 21/08/2011

Colour: Silver

Tattoo: G73

Genetic Conditions: CAI AMU NHU

WOODBOURN TED-E-BEAR (PB)
 Sire: **WOODBOURN REALLY WICKED D75 (PB)**
 WOODBOURN SERENITY W51 (PB)
 MELALEUCA ARTILLARY A16 (PB)
 Dam: **WOODBOURN MISS BARBARA E3 (PB)**
 WOODBOURN MISS BARBARA Z41 (PB)

NOTES: A very nice unit. Miss Barbara is a long, quiet, thick cow with a very good udder. She has well balanced figures across the book, and her strengths would be low birth, high growth and EMA. Joined to Woodbourn Khan K6 from 18/10/2015 until 10/01/2016. Silver female calf at foot, Woodbourn Miss Barabara L140, born 16/10/2015, tattoo 4W L140, sire Yamba Hortiness H109. **PTIC**.

\$Index Values

Long Fed +\$36

Supermarket +\$41

Heavy Grass +\$59

February 2016 Murray Grey GROUP BREEDPLAN

	GROWTH AND MATERNAL						FERT	CARCASE					
	Birth Weight (kg)	Milk (kg)	200-Day Wt (kg)	400-Day Wt (kg)	600-Day Wt (kg)	Mature Cow Wt (kg)	Scrotal Size (cm)	Carcase Wt (kg)	EMA (sq cm)	Rib Fat (mm)	Rump Fat (mm)	Retail Beef Yield %	Intra-Muscular Fat %
EBV	+4.1	+1	+26	+46	+64	+66		+40	+1.5	-0.3	-0.4	+0.8	+0.0
Acc	78%	52%	71%	71%	67%	54%		60%	47%	63%	63%	57%	53%

Purchaser: _____ \$ _____

LOT 40 WOODBOURN MISS ROSIE C22 (PB)

Born: 27/03/2007

Colour: Silver

Tattoo: C22

Genetic Conditions: CAF AMU NHU

ORCADIA PARK CENTURY (PB)
 Sire: **WARROOK HASSETT Q10 (PB) (AI)**
 WARROOK BETTY L31 (PB)
 YAMBA WITNESS (PB)
 Dam: **WOODBOURN ROSIE Z24 (PB)**
 WOODBOURN ROSIE U53 (PB)

NOTES: This pair is certainly one of the picks of the cow/calf offering. Extremely well balanced, long, thick and maintaining great femininity. She has an outstanding young calf at foot, who is showing great potential. Another of those cows with good all round balanced figures. Well worth a second look. Joined to Big Park King Island K4 from 20/10/2015 until 10/01/2016. Silver female calf at foot, Woodbourn Miss Rosie L109, born 15/09/2015, tattoo 4W L109, sire Nawarra Banana Bender D29. **PTIC**.

\$Index Values

Long Fed +\$44

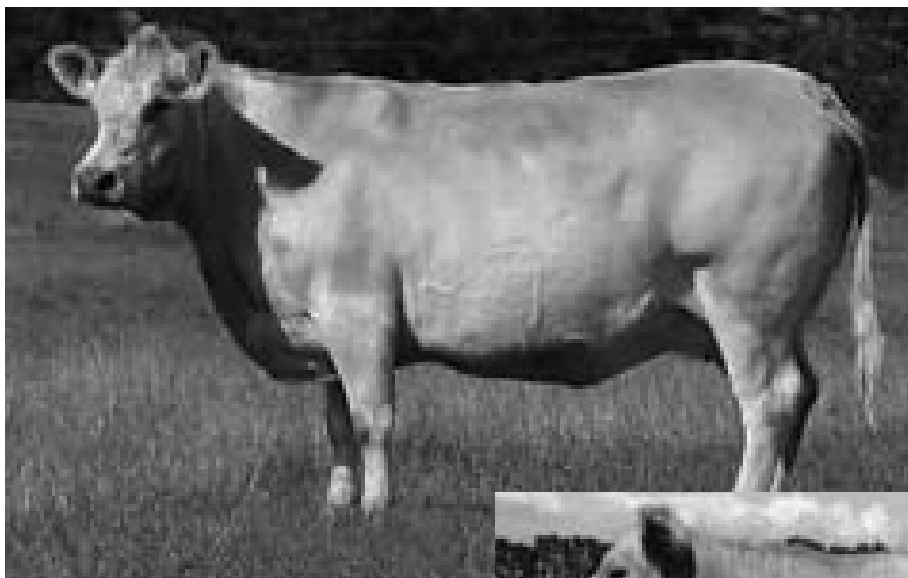
Supermarket +\$40

Heavy Grass +\$59

February 2016 Murray Grey GROUP BREEDPLAN

	GROWTH AND MATERNAL						FERT	CARCASE					
	Birth Weight (kg)	Milk (kg)	200-Day Wt (kg)	400-Day Wt (kg)	600-Day Wt (kg)	Mature Cow Wt (kg)	Scrotal Size (cm)	Carcase Wt (kg)	EMA (sq cm)	Rib Fat (mm)	Rump Fat (mm)	Retail Beef Yield %	Intra-Muscular Fat %
EBV	+5.1	+13	+28	+49	+69	+80		+46	+1.8	-1.7	-2.2	+2.0	-0.6
Acc	83%	71%	77%	75%	76%	65%		66%	54%	69%	69%	63%	60%

Purchaser: _____ \$ _____



Lot 37 Big Park Wilma E24
prior to calving before the sale



Lot 38 Woodbourn Miss Gretel Z34
prior to calving before the sale



Lot 39 Woodbourn Miss Barbara G73
with calf at foot



Lot 40 Woodbourn Miss Rosie C22 with calf at foot

LOT 41 WOODBOURN MISS AGNES J56 (PB)

Born: 20/08/2013

Colour: Silver

Tattoo: J56

Genetic Conditions: CAI AMU NHU

Sire: MELALEUCA ARTILLARY A16 (PB)

WOODBOURN EUREKA E86 (PB)

WOODBOURN PEGGY T42 (PB)

ONWARD JEREMIAH (PB)

Dam: WOODBOURN MISS AGNES G42 (PB)

WOODBOURN AGNES A44 (PB)

NOTES: A very good unit. A heifer on her first calf and doing a great job of it. Her calf is very similar to her mother, with lots of thickness and length, but still feminine. Please take time to look at her EBV's: they are exceptional. her growth is in the top 5%, her milk is up in the top 10% and her EMA is in the top 1%. Her index figures are very high. Very much a pick of the sale team.. Joined to Woodbourn Hornet F18 from 20/10/2015 until 10/12/2015 and then with Kelso Cracker C17 from 14/12/2015 until 10/01/2016. Silver female calf at foot, Woodbourn Miss Agnes L57, born 15/08/2015, tattoo 4W L57, sire Ayr Park Jaguar J19. **PTIC**

\$Index Values

Long Fed +\$41

Supermarket +\$50

Heavy Grass +\$73

February 2016 Murray Grey GROUP BREEDPLAN

	GROWTH AND MATERNAL						FERT	CARCASE					
	Birth Weight (kg)	Milk (kg)	200-Day Wt (kg)	400-Day Wt (kg)	600-Day Wt (kg)	Mature Cow Wt (kg)	Scrotal Size (cm)	Carcass Wt (kg)	EMA (sq cm)	Rib Fat (mm)	Rump Fat (mm)	Retail Beef Yield %	Intra-Muscular Fat %
EBV	+6.0	+7	+32	+53	+76	+79		+47	+3.1	+0.5	+0.7	+0.8	+0.2
Acc	77%	41%	69%	69%	65%	52%		57%	47%	63%	63%	57%	52%

Purchaser: _____ \$ _____

LOT 42 WOODBOURN MISS JEANETTE J122 (PB)

Born: 30/09/2013

Colour: Silver

Tattoo: J122

Genetic Conditions: CAI AMU NHU

Sire: GNOLEDA ZAC (PB)

NAWARRA BANANA BENDER (PB)

SPRINGWELL BANANA T43 (PB)

JYNDARRA WARRIOR W3 (PB) (AI)

Dam: WOODBOURN MISS JEANETTE A66 (PB)

WOODBOURN JEANETTE P37 (PB)

NOTES: A very young heifer on her first calf. She is very feminine, long and with a great outlook. She is doing a good job on her calf. Her EBV's for growth, milk and EMA are very good and her index figures very high. Joined to Melaleuca Ghandi G112 from 20/10/2015 until 10/01/2016. Silver female calf at foot Woodbourn Miss Jeanette L90, born 30/08/2015, tattoo 4W L90, sire Ayr Park Jaguar J19. **PTIC**

\$Index Values

Long Fed +\$44

Supermarket +\$42

Heavy Grass +\$67

February 2016 Murray Grey GROUP BREEDPLAN

	GROWTH AND MATERNAL						FERT	CARCASE					
	Birth Weight (kg)	Milk (kg)	200-Day Wt (kg)	400-Day Wt (kg)	600-Day Wt (kg)	Mature Cow Wt (kg)	Scrotal Size (cm)	Carcass Wt (kg)	EMA (sq cm)	Rib Fat (mm)	Rump Fat (mm)	Retail Beef Yield %	Intra-Muscular Fat %
EBV	+4.6	+6	+30	+43	+68	+64		+40	+2.4	-0.1	-0.1	+1.3	-0.2
Acc	77%	49%	70%	70%	66%	53%		58%	45%	61%	61%	55%	52%

Purchaser: _____ \$ _____

LOT 43 WOODBOURN HEATHER X89 (PB)

Born: 28/09/2002

Colour: Grey

Tattoo: X89

Genetic Conditions: CAF AMU NHU

Sire: ORCADIA PARK CENTURY (PB)

WARROOK HASSETT Q10 (PB) (AI)

WARROOK BETTY L31 (PB)

WOODBOURN RAMBO (PB)

Dam: WOODBOURN HEATHER T29 (PB)

WOODBOURN HEATHER 561 (PB)

NOTES: A great cow, doing a very good job on her young calf. She is certainly breeding better than she is. Her calf should continue to grow on and give good service. Again, check out the outstanding figures, especially birthweight, growth and milk figures. Joined to Yamba Hortiness H109 from 20/10/2015 until 10/01/2016. Grey female calf at foot, Woodbourn Heather L106, born 14/09/2015, tattoo 4W L106, sire Melaleuca Ghandi G112. **PTIC**

\$Index Values

Long Fed +\$40

Supermarket +\$41

Heavy Grass +\$54

February 2016 Murray Grey GROUP BREEDPLAN

	GROWTH AND MATERNAL						FERT	CARCASE					
	Birth Weight (kg)	Milk (kg)	200-Day Wt (kg)	400-Day Wt (kg)	600-Day Wt (kg)	Mature Cow Wt (kg)	Scrotal Size (cm)	Carcass Wt (kg)	EMA (sq cm)	Rib Fat (mm)	Rump Fat (mm)	Retail Beef Yield %	Intra-Muscular Fat %
EBV	+2.9	+16	+24	+44	+57	+63		+41	+1.7	-1.1	-1.5	+1.5	-0.6
Acc	85%	75%	79%	78%	77%	66%		68%	53%	62%	62%	58%	55%

Purchaser: _____ \$ _____

LOT 44 WOODBOURN CARRIE G72 (PB)

Born: 21/08/2011

Colour: Grey

Tattoo: G72

Genetic Conditions: CAI AMU NHU

Sire: WOODBOURN TED-E-BEAR (PB)

WOODBOURN REALLY WICKED D75 (PB)

WOODBOURN SERENITY W51 (PB)

MELALEUCA ARTILLARY A16 (PB)

Dam: WOODBOURN CARRIE E61 (PB)

WOODBOURN CARRIE B101 (PB)

NOTES: A very good unit, with the dam certainly doing a great job on her young calf. An upstanding cow with great balance and outlook. A great line up of EBV's on this cow. Her calf by Kelso Cracker should grow on to be a good heifer. Joined to Yamba Hortiness H109 from 20/10/2015 until 10/01/2016. Grey female calf at foot, Woodbourn Carrie L102, born 11/09/2015, tattoo 4W L102, sire Kelso Cracker C17. **PTIC**

\$Index Values

Long Fed +\$38

Supermarket +\$42

Heavy Grass +\$62

February 2016 Murray Grey GROUP BREEDPLAN

	GROWTH AND MATERNAL						FERT	CARCASE					
	Birth Weight (kg)	Milk (kg)	200-Day Wt (kg)	400-Day Wt (kg)	600-Day Wt (kg)	Mature Cow Wt (kg)	Scrotal Size (cm)	Carcass Wt (kg)	EMA (sq cm)	Rib Fat (mm)	Rump Fat (mm)	Retail Beef Yield %	Intra-Muscular Fat %
EBV	+4.6	+1	+29	+48	+69	+74		+44	+2.1	-0.5	-0.7	+1.3	+0.1
Acc	77%	50%	70%	70%	65%	52%		57%	46%	62%	62%	55%	51%

Purchaser: _____ \$ _____



Lot 41 Woodbourn Miss Agnes J56 with calf at foot



Lot 42 Woodbourn Miss Jeanette J122 with calf at foot



Lots 43 and 44 Woodbourn Heather X89 with calf at foot LHS
and Woodbourn Carrie G72 with calf at foot RHS

Steadfast Taswide

Insurance Brokers



BOB KERR ACCOUNT EXECUTIVE
welcomes existing and new clients.

M: 0498 075 431
E: bob@steadfasttaswide.com.au



www.steadfasttaswide.com.au | Steadfast Taswide Pty Ltd | ABN 24 092 613 664 AFS Licence No 238451



Time and money can be wasted experimenting with
different rates and mixes of fertiliser.
An impartial soil test from Nutrient Advantage can help to ensure
you enjoy the maximum return possible from your fertiliser use.

**Phone Mark Scott
on 0407 526936
and arrange a soil test today**

Incitec Pivot Fertilisers
proudly supporting the
2016 Woodbourn Bull Sales

18 'K' Heifers

We are very pleased with the quality of the heifers being offered in the sale this year. This line of heifers has remained at Woodbourn since weaning and they have been given every opportunity to show the full potential they are capable of, which has not been the case in the past. Having them at home in our care, has been a far better way of growing out our young females, rather than sending them away on agistment as we have done for many years. These are very well grown females, some are outstanding. The three empty heifers have been examined and are in top order to join. All the others are PTIC, to what I believe, are very good young sires. Rather than make individual comments, we are sure you will find what you are looking for. Again, as in the bulls, these heifers are pasture and hay reared with some silage.



Group of 2016 Sale 'K' Heifers

LOT 45 WOODBOURN MISS GRETEL K21 (PB)

Born: 31/03/2014 Colour: Silver Tattoo: K21 Genetic Conditions: CAI AMU NHU

Sire: MELALEUCA GHANDI G112 (PB)

MONTEREY COUGAR C72 (PB)

MELALEUCA MINNOW Z95 (PB)

NOTES: Registered. PTIC. Joined to Woodbourn Kiln K51 from 21/10/2015/until 01/01/2016.

Dam: WOODBOURN MISS GRETEL A6 (PB)

WOODBOURN GRETEL U54 (PB)

\$Index Values

Long Fed +\$43

Supermarket +\$48

Heavy Grass +\$71

February 2016 Murray Grey GROUP BREEDPLAN

	GROWTH AND MATERNAL						FERT	CARCASE					
	Birth Weight (kg)	Milk (kg)	200-Day Wt (kg)	400-Day Wt (kg)	600-Day Wt (kg)	Mature Cow Wt (kg)	Scrotal Size (cm)	Carcase Wt (kg)	EMA (sq cm)	Rib Fat (mm)	Rump Fat (mm)	Retail Beef Yield %	Intra-Muscular Fat %
EBV	+4.7	+8	+30	+48	+72	+66		+43	+2.3	-0.1	+0.0	+1.1	-0.2
Acc	78%	46%	69%	71%	71%	59%		60%	47%	63%	63%	57%	53%

Purchaser: _____ \$ _____

LOT 46 WOODBOURN MISS HEATHER K2 (PB)

Born: 19/03/2014 Colour: Silver Tattoo: K2 Genetic Conditions: CAI AMU NHU

Sire: MELALEUCA GHANDI G112 (PB)

MONTEREY COUGAR C72 (PB)

MELALEUCA MINNOW Z95 (PB)

NOTES: Registered. PTIC. Joined to Woodbourn Kiln K51 from 21/10/2015/until 01/01/2016.

Dam: WOODBOURN MISS HEATHER B16 (PB)

WILTSHIRE XTRA SPECIAL (PB) (AI)

WOODBOURN HEATHER Y67 (PB)

\$Index Values

Long Fed +\$36

Supermarket +\$41

Heavy Grass +\$59

February 2016 Murray Grey GROUP BREEDPLAN

	GROWTH AND MATERNAL						FERT	CARCASE					
	Birth Weight (kg)	Milk (kg)	200-Day Wt (kg)	400-Day Wt (kg)	600-Day Wt (kg)	Mature Cow Wt (kg)	Scrotal Size (cm)	Carcase Wt (kg)	EMA (sq cm)	Rib Fat (mm)	Rump Fat (mm)	Retail Beef Yield %	Intra-Muscular Fat %
EBV	+3.4	+3	+23	+37	+54	+56		+35	+1.4	-0.6	-0.7	+1.3	-0.3
Acc	78%	44%	69%	70%	71%	58%		59%	47%	63%	63%	56%	52%

Purchaser: _____ \$ _____

LOT 47 WOODBOURN MISS JOCELYN K9 (PB)

Born: 26/03/2014

Colour: Silver

Tattoo: K9

Genetic Conditions: CAI AMU NHU

Sire: MELALEUCA GHANDI G112 (PB)

MONTEREY COUGAR C72 (PB)
MELALEUCA MINNOW Z95 (PB)

NOTES: Registered. PTIC. Joined to Cam Grove Xman K33 from 21/10/2015/until 01/01/2016.

Dam: WOODBOURN JOCELYN D41 (PB)

MELALEUCA ARTILLARY A16 (PB)
YAMBA JOCELYN V83 (GR1)

\$Index Values

Long Fed +\$33

Supermarket +\$38

Heavy Grass +\$57

February 2016 Murray Grey GROUP BREEDPLAN

	GROWTH AND MATERNAL						FERT	CARCASE					
	Birth Weight (kg)	Milk (kg)	200-Day Wt (kg)	400-Day Wt (kg)	600-Day Wt (kg)	Mature Cow Wt (kg)	Scrotal Size (cm)	Carcass Wt (kg)	EMA (sq cm)	Rib Fat (mm)	Rump Fat (mm)	Retail Beef Yield %	Intra-Muscular Fat %
EBV	+7.9	+1	+38	+55	+77	+78		+44	+1.7	-0.7	-0.9	+1.3	-0.1
Acc	78%	41%	69%	70%	70%	57%		59%	46%	62%	61%	55%	51%

Purchaser: _____ \$ _____

LOT 48 BIG PARK MISS GRETEL K13 (PB)

Born: 22/03/2014

Colour: Silver

Tattoo: K13

Genetic Conditions: CAU AMU NHU

Sire: WOODBOURN FRANCO F17 (PB)

MELALEUCA ARTILLARY A16 (PB)
WOODBOURN REGINA A53 (PB)

NOTES: Registered. PTIC. Joined to Woodbourn Kiln K51 from 21/10/2015/until 01/01/2016.

Dam: WOODBOURN MISS GRETEL V74 (PB)

NEWFIELDS VO ROUGE (PB)
WOODBOURN MISS GRETEL P74 (PB)

\$Index Values

Long Fed +\$25

Supermarket +\$26

Heavy Grass +\$43

February 2016 Murray Grey GROUP BREEDPLAN

	GROWTH AND MATERNAL						FERT	CARCASE					
	Birth Weight (kg)	Milk (kg)	200-Day Wt (kg)	400-Day Wt (kg)	600-Day Wt (kg)	Mature Cow Wt (kg)	Scrotal Size (cm)	Carcass Wt (kg)	EMA (sq cm)	Rib Fat (mm)	Rump Fat (mm)	Retail Beef Yield %	Intra-Muscular Fat %
EBV	+3.1	+0	+17	+27	+43	+53		+27	+2.3	+0.2	+0.3	+0.6	+0.3
Acc	62%	48%	61%	65%	66%	56%		57%	43%	58%	58%	51%	47%

Purchaser: _____ \$ _____

LOT 49 WOODBOURN BARBARA K62 (PB)

Born: 08/09/2014

Colour: Grey

Tattoo: K62

Genetic Conditions: CAI AMU NHU

Sire: WOODBOURN EUREKA E86 (PB)

MELALEUCA ARTILLARY A16 (PB)
WOODBOURN PEGGY T42 (PB)

NOTES: Registered. PTIC. Joined to Cam Grove Xman K33 from 21/10/2015/until 01/01/2016.

Dam: WOODBOURN BARBARA C45 (PB)

BUNDALÉER X ROAD X37 (PB)
WOODBOURN MISS BARBARA W30 (PB)

\$Index Values

Long Fed +\$33

Supermarket +\$31

Heavy Grass +\$55

February 2016 Murray Grey GROUP BREEDPLAN

	GROWTH AND MATERNAL						FERT	CARCASE					
	Birth Weight (kg)	Milk (kg)	200-Day Wt (kg)	400-Day Wt (kg)	600-Day Wt (kg)	Mature Cow Wt (kg)	Scrotal Size (cm)	Carcass Wt (kg)	EMA (sq cm)	Rib Fat (mm)	Rump Fat (mm)	Retail Beef Yield %	Intra-Muscular Fat %
EBV	+6.1	+9	+31	+43	+69	+75		+40	+2.6	-0.9	-1.2	+1.7	-0.2
Acc	78%	46%	70%	70%	66%	52%		58%	48%	63%	63%	57%	53%

Purchaser: _____ \$ _____

LOT 50 WOODBOURN MISS SALLY K88 (PB)

Born: 21/09/2014

Colour: Silver

Tattoo: K88

Genetic Conditions: CAI AMU NHU

Sire: MELALEUCA GHANDI G112 (PB)

MONTEREY COUGAR C72 (PB)
MELALEUCA MINNOW Z95 (PB)

NOTES: Registered. PTIC. Joined to Cam Grove Xman K33 from 21/10/2015/until 01/01/2016.

Dam: WOODBOURN MISS SALLY F10 (PB)

MELALEUCA ARTILLARY A16 (PB)
WOODBOURN SALLY A42 (PB)

\$Index Values

Long Fed +\$32

Supermarket +\$46

Heavy Grass +\$73

February 2016 Murray Grey GROUP BREEDPLAN

	GROWTH AND MATERNAL						FERT	CARCASE					
	Birth Weight (kg)	Milk (kg)	200-Day Wt (kg)	400-Day Wt (kg)	600-Day Wt (kg)	Mature Cow Wt (kg)	Scrotal Size (cm)	Carcass Wt (kg)	EMA (sq cm)	Rib Fat (mm)	Rump Fat (mm)	Retail Beef Yield %	Intra-Muscular Fat %
EBV	+7.5	+1	+36	+54	+79	+83	+1.3	+43	+2.2	+1.6	+2.2	-0.2	+0.6
Acc	78%	44%	70%	70%	66%	53%	50%	59%	49%	64%	64%	58%	53%

Purchaser: _____ \$ _____

LOT 51 WOODBOURN GRETEL K54 (PB)

Born: 29/08/2014

Colour: Grey

Tattoo: K54

Genetic Conditions: CAI AMU NHU

Sire: WOODBOURN F18 HORNET (PB)

WOODBOURN MISS ROSIE C95 (PB)

JYNDARRA WARRIOR W3 (PB) (AI)

Dam: WOODBOURN GRETEL B104 (PB)

WOODBOURN MISS GRETEL W60 (PB)

NOTES: Registered. PTIC. Joined to Woodbourn Khan K6 from 21/10/2015/until 01/01/2016.

\$Index Values

Long Fed +\$48

Supermarket +\$51

Heavy Grass +\$71

February 2016 Murray Grey GROUP BREEDPLAN

	GROWTH AND MATERNAL						FERT	CARCASE					
	Birth Weight (kg)	Milk (kg)	200-Day Wt (kg)	400-Day Wt (kg)	600-Day Wt (kg)	Mature Cow Wt (kg)	Scrotal Size (cm)	Carcase Wt (kg)	EMA (sq cm)	Rib Fat (mm)	Rump Fat (mm)	Retail Beef Yield %	Intra-Muscular Fat %
EBV	+2.7	+10	+27	+45	+68	+66		+44	+1.6	+0.2	+0.4	+0.6	+0.3
Acc	77%	42%	70%	71%	66%	53%		59%	47%	62%	62%	56%	53%

Purchaser: _____ \$ _____

LOT 52 BIG PARK BARBARA K22 (PB)

Born: 04/04/2014

Colour: Silver

Tattoo: K22

Genetic Conditions: CAI AMU NHU

Sire: BIG PARK GEE WHIZ G14 (PB)

BIG PARK BRILLO D14 (BF)

ONWARD SAM (PB)

Dam: BIG PARK BARBARA H9 (PB)

WOODBOURN MISS Y BARBARA C10 (PB)

NOTES: Registered. PTIC. Joined to Woodbourn Kiln K51 from 21/10/2015/until 01/01/2016.

\$Index Values

Long Fed +\$19

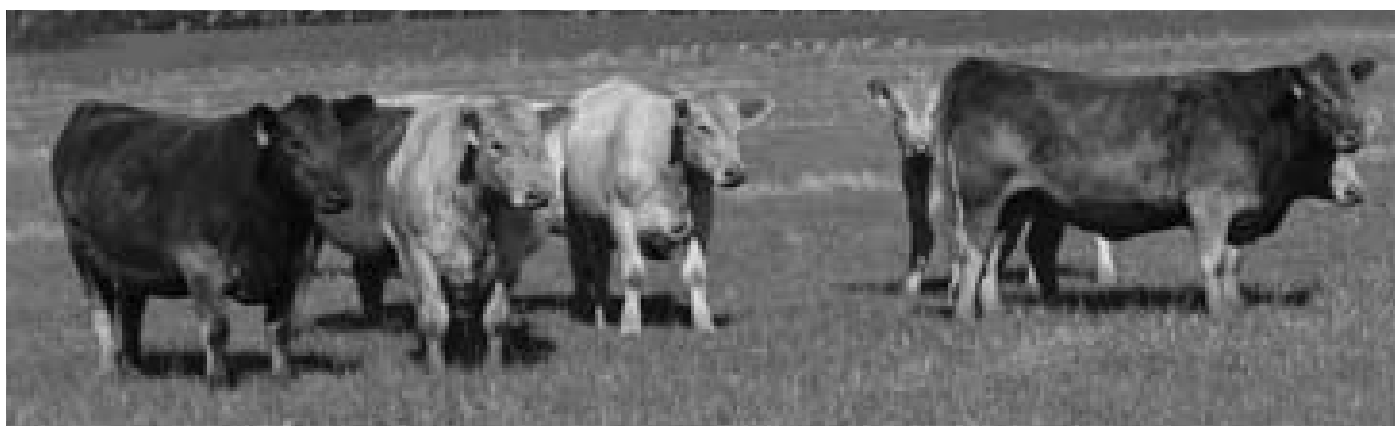
Supermarket +\$22

Heavy Grass +\$45

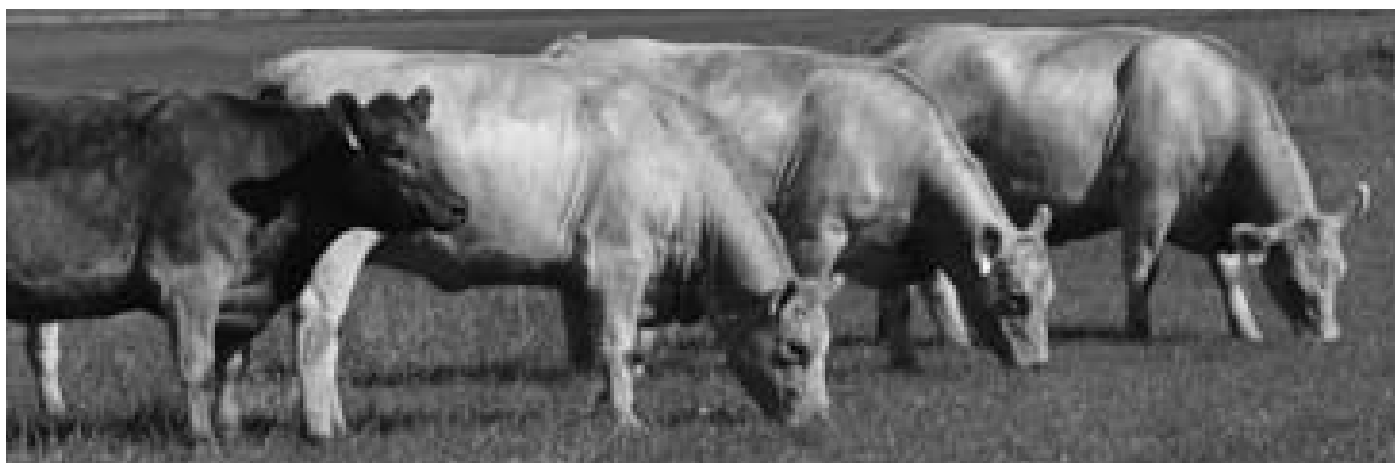
February 2016 Murray Grey GROUP BREEDPLAN

	GROWTH AND MATERNAL						FERT	CARCASE					
	Birth Weight (kg)	Milk (kg)	200-Day Wt (kg)	400-Day Wt (kg)	600-Day Wt (kg)	Mature Cow Wt (kg)	Scrotal Size (cm)	Carcase Wt (kg)	EMA (sq cm)	Rib Fat (mm)	Rump Fat (mm)	Retail Beef Yield %	Intra-Muscular Fat %
EBV	+2.9		+18	+25	+48	+62		+26	+1.2	+1.1	+1.6	-0.3	+0.6
Acc	59%		59%	62%	63%	51%		52%	36%	55%	55%	47%	43%

Purchaser: _____ \$ _____



Group of 2016 Sale 'K' Heifers



Group of 2016 Sale 'K' Heifers

LOT 53 BIG PARK CATERINA K17 (PB)

Born: 26/03/2014 Colour: Silver Tattoo: K17 Genetic Conditions: CAI AMU NHU

Sire: BIG PARK ENZAC E27 (PB)
BIG PARK HENDLEY H6 (PB)
BIG PARK VITELLO Y37 (PB)
ONWARD JEREMIAH (PB)
Dam: BIG PARK CATERINA G4 (PB)
BIG PARK CATERINA B24 (PB)

NOTES: Registered. PTIC. Joined to Woodbourn Kiln K51 from 21/10/2015/until 01/01/2016.

\$Index Values
Long Fed +\$22 Supermarket +\$19 Heavy Grass +\$33

February 2016 Murray Grey GROUP BREEDPLAN

	GROWTH AND MATERNAL						FERT	CARCASE					
	Birth Weight (kg)	Milk (kg)	200-Day Wt (kg)	400-Day Wt (kg)	600-Day Wt (kg)	Mature Cow Wt (kg)	Scrotal Size (cm)	Carcass Wt (kg)	EMA (sq cm)	Rib Fat (mm)	Rump Fat (mm)	Retail Beef Yield %	Intra-Muscular Fat %
EBV	+2.6		+16	+25	+36	+46		+21	+0.5	-0.1	+0.0	+0.4	-0.4
Acc	60%		59%	62%	64%	52%		52%	33%	53%	53%	45%	41%

Purchaser: _____ \$ _____

LOT 54 WOODBOURN MISS EVITA K40 (PB)

Born: 17/07/2014 Colour: Silver Tattoo: K40 Genetic Conditions: CAI AMU NHU

Sire: KELSO CRACKER C17 (GR2)
WOODBOURN F18 HORNET (PB)
WOODBOURN MISS ROSIE C95 (PB)
MELALEUCA ARTILLARY A16 (PB)
Dam: WOODBOURN EVITA E17 (PB)
BIG PARK EVITA Z66 (PB)

NOTES: Registered. PTIC. Joined to Woodbourn Khan K6 from 21/10/2015/until 01/01/2016.

\$Index Values
Long Fed +\$41 Supermarket +\$44 Heavy Grass +\$63

February 2016 Murray Grey GROUP BREEDPLAN

	GROWTH AND MATERNAL						FERT	CARCASE					
	Birth Weight (kg)	Milk (kg)	200-Day Wt (kg)	400-Day Wt (kg)	600-Day Wt (kg)	Mature Cow Wt (kg)	Scrotal Size (cm)	Carcass Wt (kg)	EMA (sq cm)	Rib Fat (mm)	Rump Fat (mm)	Retail Beef Yield %	Intra-Muscular Fat %
EBV	+4.5	+5	+31	+54	+77	+78		+48	+1.6	-1.4	-1.8	+1.4	-0.2
Acc	77%	40%	69%	69%	65%	52%		57%	46%	63%	62%	56%	53%

Purchaser: _____ \$ _____

LOT 55 WOODBOURN MISS DEBRA K83 (PB)

Born: 17/09/2014 Colour: Silver Tattoo: K83 Genetic Conditions: CAI AMU NHU

Sire: MELALEUCA ARTILLARY A16 (PB)
WOODBOURN GALAXY G107 (PB)
WOODBOURN PEGGY T42 (PB)
AYR PARK CISCO KID C64 (PB) (AI)
Dam: WOODBOURN DEBRA F50 (PB)
LINDSAY DEBRA Z57 (PB)

NOTES: Registered. PTIC. Joined to Woodbourn Khan K6 from 21/10/2015/until 01/01/2016.

\$Index Values
Long Fed +\$34 Supermarket +\$39 Heavy Grass +\$56

February 2016 Murray Grey GROUP BREEDPLAN

	GROWTH AND MATERNAL						FERT	CARCASE					
	Birth Weight (kg)	Milk (kg)	200-Day Wt (kg)	400-Day Wt (kg)	600-Day Wt (kg)	Mature Cow Wt (kg)	Scrotal Size (cm)	Carcass Wt (kg)	EMA (sq cm)	Rib Fat (mm)	Rump Fat (mm)	Retail Beef Yield %	Intra-Muscular Fat %
EBV	+4.2	+5	+27	+45	+61			+40	+2.2	-0.9	-1.2	+1.6	-0.5
Acc	76%	42%	68%	67%	63%			55%	45%	61%	61%	55%	50%

Purchaser: _____ \$ _____

LOT 56 WOODBOURN MISS BARBARA K65 (PB)

Born: 09/09/2014 Colour: Silver Tattoo: K65 Genetic Conditions: CAI AMU NHU

Sire: WOODBOURN ROCKET MAN A11 (PB)
WOODBOURN AMIGO D8 (PB)
WOODBOURN AGNES A44 (PB)
MELALEUCA ARTILLARY A16 (PB)
Dam: WOODBOURN MISS BARBARA F11 (PB)
WOODBOURN MISS BARBARA Z87 (PB)

NOTES: Registered. PTIC. Joined to Woodbourn Khan K6 from 21/10/2015/until 01/01/2016.

\$Index Values
Long Fed +\$40 Supermarket +\$43 Heavy Grass +\$63

February 2016 Murray Grey GROUP BREEDPLAN

	GROWTH AND MATERNAL						FERT	CARCASE					
	Birth Weight (kg)	Milk (kg)	200-Day Wt (kg)	400-Day Wt (kg)	600-Day Wt (kg)	Mature Cow Wt (kg)	Scrotal Size (cm)	Carcass Wt (kg)	EMA (sq cm)	Rib Fat (mm)	Rump Fat (mm)	Retail Beef Yield %	Intra-Muscular Fat %
EBV	+2.7	+1	+24	+40	+60	+59		+40	+2.2	-0.4	-0.4	+1.2	-0.1
Acc	77%	43%	70%	69%	66%	54%		58%	47%	63%	63%	57%	53%

Purchaser: _____ \$ _____

LOT 57 WOODBOURN CARRIE K46 (PB)

Born: 22/08/2014

Colour: Grey

Tattoo: K46

Genetic Conditions: CAI AMU NHU

Sire: WOODBOURN F18 HORNET (PB)

WOODBOURN MISS ROSIE C95 (PB)

WOODBOURN W15 (PB)

Dam: WOODBOURN CARRIE Z46 (PB)

WOODBOURN MISS CARRIE V18 (PB)

NOTES: Registered. PTIC. Joined to Woodbourn Khan K6 from 21/10/2015/until 01/01/2016.

\$Index Values

Long Fed +\$46

Supermarket +\$46

Heavy Grass +\$65

February 2016 Murray Grey GROUP BREEDPLAN

	GROWTH AND MATERNAL						FERT	CARCASE					
	Birth Weight (kg)	Milk (kg)	200-Day Wt (kg)	400-Day Wt (kg)	600-Day Wt (kg)	Mature Cow Wt (kg)	Scrotal Size (cm)	Carcase Wt (kg)	EMA (sq cm)	Rib Fat (mm)	Rump Fat (mm)	Retail Beef Yield %	Intra-Muscular Fat %
EBV	+3.1	+10	+29	+47	+69	+68		+45	+1.5	-0.6	-0.7	+1.1	-0.1
Acc	77%	37%	69%	69%	64%	50%		57%	44%	60%	60%	54%	50%

Purchaser: _____ \$ _____

LOT 58 WOODBOURN MISS SALLY K48 (PB)

Born: 23/08/2014

Colour: Silver

Tattoo: K48

Genetic Conditions: CAI AMU NHU

Sire: AYR PARK HIPSTER H64 (GR2)

AYR PARK KATRINA E32 (PB) (AI)

MELALEUCA ARTILLARY A16 (PB)

Dam: WOODBOURN SALLY H12 (PB)

WOODBOURN SALLY C83 (PB)

NOTES: Registered. Unjoined

\$Index Values

Long Fed +\$28

Supermarket +\$34

Heavy Grass +\$53

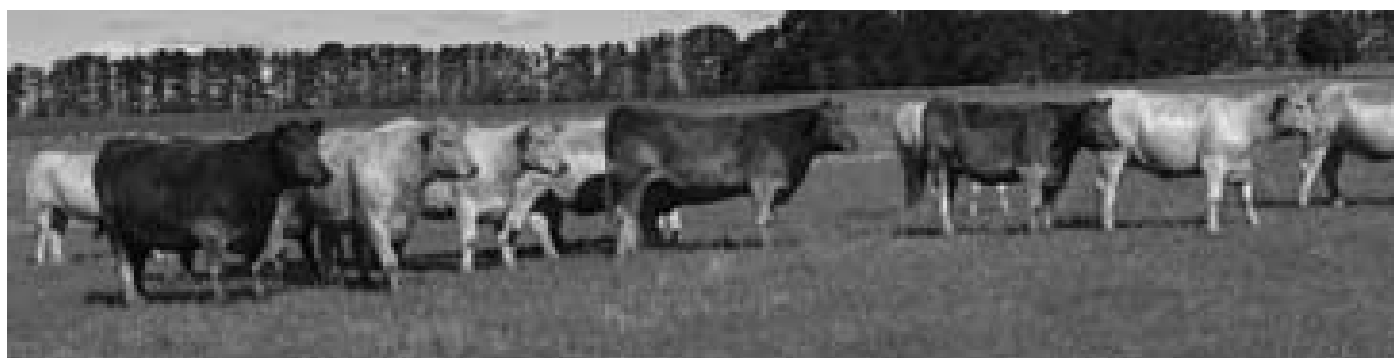
February 2016 Murray Grey GROUP BREEDPLAN

	GROWTH AND MATERNAL						FERT	CARCASE					
	Birth Weight (kg)	Milk (kg)	200-Day Wt (kg)	400-Day Wt (kg)	600-Day Wt (kg)	Mature Cow Wt (kg)	Scrotal Size (cm)	Carcase Wt (kg)	EMA (sq cm)	Rib Fat (mm)	Rump Fat (mm)	Retail Beef Yield %	Intra-Muscular Fat %
EBV	+4.2	+0	+24	+35	+51			+29	+2.0	+1.2	+1.7	-0.1	+0.4
Acc	75%	35%	65%	64%	61%			52%	42%	58%	58%	52%	47%

Purchaser: _____ \$ _____



Group of 2016 Sale 'K' Heifers



Group of 2016 Sale 'K' Heifers

LOT 59 WOODBOURN JEANETTE K47 (PB)

Born: 23/08/2014

Colour: Grey

Tattoo: K47

Genetic Conditions: CAI AMU NHU

Sire: WHEELVIEW FONZZIE (PB)

THE ULTIMATE CLASSIC (PB)

WHEELVIEW DORIS B30 (PB)

NAWARRA BANANA BENDER (PB)

Dam: WOODBOURN JEANETTE H27 (PB)

WOODBOURN MISS JEANETTE D37 (PB)

NOTES: Registered. Unjoined

\$Index Values

Long Fed +\$41

Supermarket +\$35

Heavy Grass +\$55

February 2016 Murray Grey GROUP BREEDPLAN

	GROWTH AND MATERNAL						FERT	CARCASE					
	Birth Weight (kg)	Milk (kg)	200-Day Wt (kg)	400-Day Wt (kg)	600-Day Wt (kg)	Mature Cow Wt (kg)	Scrotal Size (cm)	Carcase Wt (kg)	EMA (sq cm)	Rib Fat (mm)	Rump Fat (mm)	Retail Beef Yield %	Intra-Muscular Fat %
EBV	+2.3		+22	+29	+46	+54		+28	+0.9	+1.0	+1.4	-0.2	+0.4
Acc	75%		66%	66%	63%	50%		54%	42%	59%	59%	52%	48%

Purchaser: _____ \$ _____

LOT 60 WOODBOURN MISS JEANETTE K107 (PB)

Born: 06/10/2014

Colour: Silver

Tattoo: K107

Genetic Conditions: CAI AMU NHU

Sire: WOODBOURN AMIGO D8 (PB)

WOODBOURN ROCKET MAN A11 (PB)

WOODBOURN AGNES A44 (PB)

WOODBOURN ROCKET MAN A11 (PB)

Dam: WOODBOURN MISS JEANETTE F56 (PB)

WOODBOURN JEANETTE U19 (PB)

NOTES: Registered. Unjoined

\$Index Values

Long Fed +\$40

Supermarket +\$40

Heavy Grass +\$55

February 2016 Murray Grey GROUP BREEDPLAN

	GROWTH AND MATERNAL						FERT	CARCASE					
	Birth Weight (kg)	Milk (kg)	200-Day Wt (kg)	400-Day Wt (kg)	600-Day Wt (kg)	Mature Cow Wt (kg)	Scrotal Size (cm)	Carcase Wt (kg)	EMA (sq cm)	Rib Fat (mm)	Rump Fat (mm)	Retail Beef Yield %	Intra-Muscular Fat %
EBV	+2.6	+5	+23	+41	+58	+59		+39	+1.2	-1.5	-2.1	+1.7	-0.5
Acc	79%	45%	71%	71%	67%	54%		60%	48%	65%	65%	59%	55%

Purchaser: _____ \$ _____

LOT 61 WOODBOURN MISS MANDI K79 (PB)

Born: 16/09/2014

Colour: Silver

Tattoo: K79

Genetic Conditions: CAI AMU NHU

Sire: WOODBOURN GALAXY G107 (PB)

MELALEUCA ARTILLARY A16 (PB)

WOODBOURN PEGGY T42 (PB)

SPRINGTON ULTIMATE U1 (PB)

Dam: SPRINGTON MANDI (PB)

SPRINGFIELD PARK MANDI (PB)

NOTES: Registered. PTIC. Joined to Woodbourn Khan K6 from 21/10/2015/until 01/01/2016.

\$Index Values

Long Fed +\$22

Supermarket +\$31

Heavy Grass +\$45

February 2016 Murray Grey GROUP BREEDPLAN

	GROWTH AND MATERNAL						FERT	CARCASE					
	Birth Weight (kg)	Milk (kg)	200-Day Wt (kg)	400-Day Wt (kg)	600-Day Wt (kg)	Mature Cow Wt (kg)	Scrotal Size (cm)	Carcase Wt (kg)	EMA (sq cm)	Rib Fat (mm)	Rump Fat (mm)	Retail Beef Yield %	Intra-Muscular Fat %
EBV	+5.5	+2	+23	+39	+53			+30	+1.7	-0.2	-0.2	+0.8	+0.0
Acc	76%	43%	66%	66%	61%			52%	41%	58%	58%	51%	47%

Purchaser: _____ \$ _____

LOT 62 WOODBOURN MISS PANSY K49 (GR2)

Born: 28/08/2014

Colour: Silver

Tattoo: K49

Genetic Conditions: CAI AMU NHU

Sire: WOODBOURN EUREKA E86 (PB)

MELALEUCA ARTILLARY A16 (PB)

WOODBOURN PEGGY T42 (PB)

THE GLEN MANUEL U125 (PB)

Dam: YAMBA PANSY X6 (GR1)

SS8 NLX S41 (AA) (GR0)

NOTES: Registered. PTIC. Joined to Woodbourn Khan K6 from 21/10/2015/until 01/01/2016.

\$Index Values

Long Fed +\$34

Supermarket +\$36

Heavy Grass +\$55

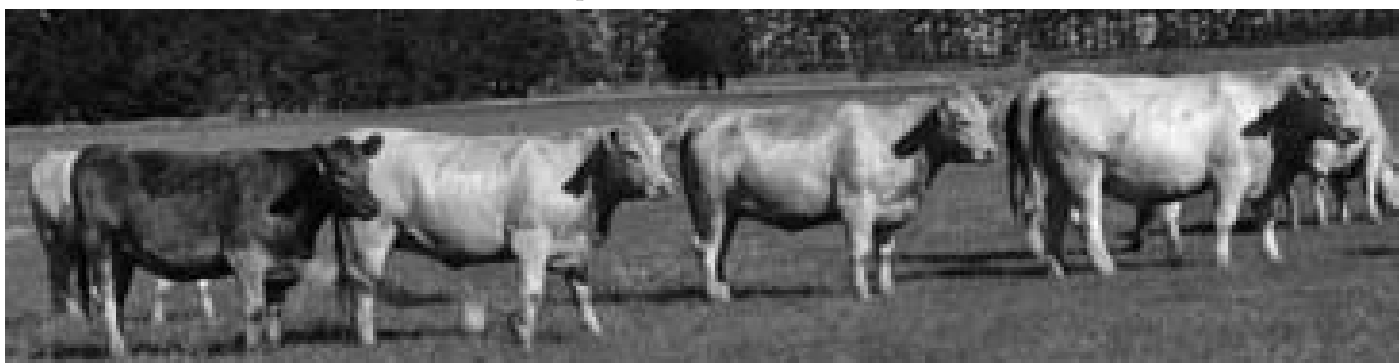
February 2016 Murray Grey GROUP BREEDPLAN

	GROWTH AND MATERNAL						FERT	CARCASE					
	Birth Weight (kg)	Milk (kg)	200-Day Wt (kg)	400-Day Wt (kg)	600-Day Wt (kg)	Mature Cow Wt (kg)	Scrotal Size (cm)	Carcase Wt (kg)	EMA (sq cm)	Rib Fat (mm)	Rump Fat (mm)	Retail Beef Yield %	Intra-Muscular Fat %
EBV	+4.4	+3	+27	+39	+61	+64		+34	+1.9	+0.2	+0.3	+0.4	+0.5
Acc	77%	47%	69%	70%	65%	51%		58%	47%	63%	62%	57%	52%

Purchaser: _____ \$ _____



Group of 2016 Sale 'K' Heifers



Group of 2016 Sale 'K' Heifers

TP Jones & Co
Your locals in agriculture

We know at TP Jones & Co

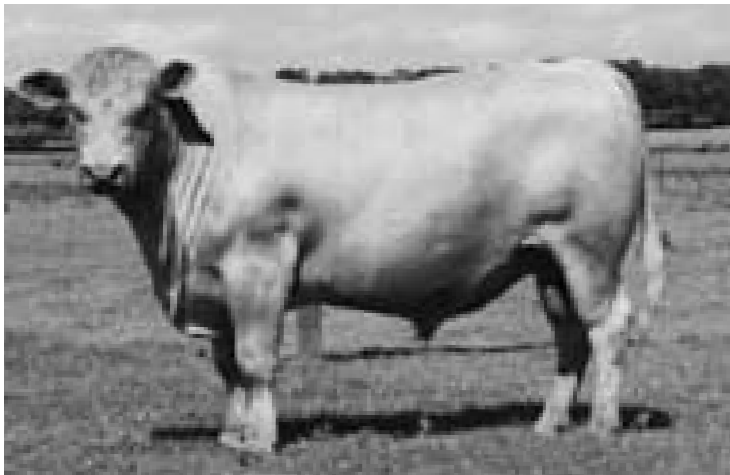
Sheep	Goats	Pigs	Cattle	Horses
Poultry	Ducks	Fish	Bees	TP Jones & Co Your locals in agriculture

321 Robert Road, Youngtown, 7243 | Phone: 6343 1000
 22 Wellington Street, Longford | Phone: 6381 3443
www.tpjones.com.au

New Sires at Woodbourn



Melaleuca Karl K231



Tullibardine Kojak K82



Rabobank

All In One account. All your business finance needs in one.

As the largest dedicated agribusiness bank, we understand the unique financial needs of primary producers, that's why we've created the All In One account.

With a single account, you have the benefits of an overdraft and term finance plus the convenience of ATMs, online access and VISA debit cards. And what's more, you have the ability to simply fix your 1-5 year interest rates online. To discover how our All In One account can benefit your business, call us to arrange a visit.

Contact your local branch on **1300 30 30 33**
or visit **www.rabobank.com.au**



Rabobank

The issuer of the All In One account is Rabobank Australia Limited ABN 50 001 621 129 AFSL 234 700.

Reference and Joining Sires

REFERENCE SIRE MELALEUCA KARL K231 (PB)

Born: 10/03/2014

Colour: Silver

Tattoo: MCA K231

Genetic Conditions: AMU, NHU, CAF

Sire: MELALEUCA DEVIL D23 (PB)
MELALEUCA GRID LOCK G15 (PB)
MELALEUCA ESBAY D195 (PB)

Dam: MELALEUCA EWEN E55 (PB)
MELALEUCA DAIYA H77 (PB)
MELALEUCA DAIYA C167 (PB)

NOTES: New sire for Woodbourn. Purchased this year, in partnership with Mr Barry Mc Donald, New Zealand, for the top price at the Melaleuca sale. The first calf from a two year old heifer, it is easy to see his easy doing ability, his smoothness and softness, all of which are reflected in his outstanding carcass EBV's. A good frame score of 6.5.

\$Index Values

Long Fed +\$42

Supermarket +\$45

Heavy Grass +\$62

February 2016 Murray Grey GROUP BREEDPLAN

	GROWTH AND MATERNAL						FERT	CARCASS						CALVING EASE	
	Birth Weight (kg)	Milk (kg)	200-Day Wt (kg)	400-Day Wt (kg)	600-Day Wt (kg)	Mature Cow Wt (kg)	Scrotal Size (cm)	Carcass Wt (kg)	EMA (sq cm)	Rib Fat (mm)	Rump Fat (mm)	Retail Beef Yield %	Intra-Muscular Fat %	Calv. Ease Direct%	Calv. Ease Dtrs %
EBV		+2	+22	+39	+55		+1.2		+1.9	-0.1	-0.1	+0.8	+0.1		
Acc		37%	55%	55%	53%		45%		34%	41%	41%	38%	35%		

REFERENCE SIRE TULLIBARDINE KOJAK K82 (PB)

Born: 01/03/2014

Colour: Silver

Tattoo: PIE K82

Genetic Conditions: AMU, NHU, CAU

Sire: LINDSAY CAPABLE C104 (PB) (AI)
LINDSAY ENFORCER E94 (PB)
LINDSAY LEANNE B169 (PB)

Dam: MONTEREY BOOTLEGGER B216 (PB)
TULLIBARDINE QUID F16 (PB) (AI)
TULLIBARDINE QUID A91 (PB)

NOTES: A second new sire for Woodbourn and also purchased in partnership with Mr Barry McDonald, New Zealand. He was a stand out bull amongst the Western Australian bulls offered this February and we were pleased to pay top price in the Tullibardine sale for him. Again, a bull that has softness, correctness and outstanding EBV's.

\$Index Values

Long Fed +\$47

Supermarket +\$44

Heavy Grass +\$67

February 2016 Murray Grey GROUP BREEDPLAN

	GROWTH AND MATERNAL						FERT	CARCASS						CALVING EASE	
	Birth Weight (kg)	Milk (kg)	200-Day Wt (kg)	400-Day Wt (kg)	600-Day Wt (kg)	Mature Cow Wt (kg)	Scrotal Size (cm)	Carcass Wt (kg)	EMA (sq cm)	Rib Fat (mm)	Rump Fat (mm)	Retail Beef Yield %	Intra-Muscular Fat %	Calv. Ease Direct%	Calv. Ease Dtrs %
EBV	+4.6	+3	+29	+44	+64	+72	+1.7	+38	+1.9	-0.2	-0.3	+1.2	-0.2	-0.1	
Acc	77%	36%	67%	70%	71%	58%	71%	59%	48%	56%	56%	52%	44%	37%	

REFERENCE SIRE WOODBOURN EUREKA E86 (PB)

Born: 12/09/2009

Colour: Silver

Tattoo: 4W E86

Genetic Conditions: AMU, NHU, CAF

Sire: MONTEREY EXCEPTIONAL (PB)
MELALEUCA ARTILLARY A16 (PB)
MELALEUCA ESMERELDA U65 (PB) (AI)

Dam: WARROOK HASSETT Q10 (PB) (AI)
WOODBOURN PEGGY T42 (PB)
WOODBOURN PEGGY P108 (PB)

NOTES: One of the picks of the year for that year, both in figures and in phenotype. Extraordinary figures across the page, low birth, high growth, huge EMA, and positive fats, all on a milk figure double breed average. He is very long and stylish with the softness and thickness that is being sought after.

\$Index Values

Long Fed +\$38

Supermarket +\$40

Heavy Grass +\$62

February 2016 Murray Grey GROUP BREEDPLAN

	GROWTH AND MATERNAL						FERT	CARCASS						CALVING EASE	
	Birth Weight (kg)	Milk (kg)	200-Day Wt (kg)	400-Day Wt (kg)	600-Day Wt (kg)	Mature Cow Wt (kg)	Scrotal Size (cm)	Carcass Wt (kg)	EMA (sq cm)	Rib Fat (mm)	Rump Fat (mm)	Retail Beef Yield %	Intra-Muscular Fat %	Calv. Ease Direct%	Calv. Ease Dtrs %
EBV	+4.3	+7	+27	+36	+56	+62	+0.7	+36	+2.8	+1.0	+1.4	+0.6	+0.3	-3.0	-1.5
Acc	93%	59%	87%	88%	83%	68%	56%	76%	66%	75%	74%	71%	67%	60%	48%

REFERENCE SIRE WOODBOURN F18 HORNET (PB)

Born: 28/03/2010

Colour: Silver

Tattoo: 4W F18

Genetic Conditions: AMU, NHU, CAF

Sire: KELSO YOGO Y13 (PB) (AI)
KELSO CRACKER C17 (GR2)
LINDSAY DONNA Z13 (CM)

Dam: WOODBOURN WARRIOR A69 (PB)
WOODBOURN MISS ROSIE C95 (PB)
WOODBOURN ROSIE A5 (PB)

NOTES: The pick of the drop for his year, and certainly one of the picks of those we have bred at Woodbourn. An upstanding, very thick, long, structurally sound silver bull. A great example of the breed. Excellent feet and sheath.

\$Index Values

Long Fed +\$53

Supermarket +\$53

Heavy Grass +\$75

February 2016 Murray Grey GROUP BREEDPLAN

	GROWTH AND MATERNAL						FERT	CARCASS						CALVING EASE	
	Birth Weight (kg)	Milk (kg)	200-Day Wt (kg)	400-Day Wt (kg)	600-Day Wt (kg)	Mature Cow Wt (kg)	Scrotal Size (cm)	Carcass Wt (kg)	EMA (sq cm)	Rib Fat (mm)	Rump Fat (mm)	Retail Beef Yield %	Intra-Muscular Fat %	Calv. Ease Direct%	Calv. Ease Dtrs %
EBV	+2.7	+13	+31	+55	+81	+82	+0.7	+54	+1.3	-1.3	-1.6	+1.4	-0.3	+1.5	+0.8
Acc	93%	42%	87%	88%	83%	68%	54%	74%	60%	72%	72%	68%	66%	58%	42%

Reference and Joining Sires

REFERENCE SIRE MELALEUCA GHANDI G112 (PB)

Born: 25/03/2011 Colour: Silver Tattoo: MCA G112 Genetic Conditions: AMF, NHF, CAF

Sire: MONTEREY ZORRO Z183 (PB)
MONTEREY DUTCHESS U65 (PB)

NOTES: Ghandi was purchased for his great carcass figures, with positive fats, retail beef and IMF as well as a very good EMA. He has a great outlook and scale with very smooth shoulders.

Dam: MELALEUCA VOYAGER V56 (PB)
MELALEUCA MINNOW Z95 (PB)
MELALEUCA MINNOW X40 (PB)

\$Index Values
Long Fed +\$41 Supermarket +\$53 Heavy Grass +\$78

February 2016 Murray Grey GROUP BREEDPLAN

	GROWTH AND MATERNAL						FERT	CARCASS						CALVING EASE	
	Birth Weight (kg)	Milk (kg)	200-Day Wt (kg)	400-Day Wt (kg)	600-Day Wt (kg)	Mature Cow Wt (kg)	Scrotal Size (cm)	Carcass Wt (kg)	EMA (sq cm)	Rib Fat (mm)	Rump Fat (mm)	Retail Beef Yield %	Intra-Muscular Fat %	Calv. Ease Direct%	Calv. Ease Dtrs %
EBV	+6.1	+3	+34	+56	+81	+80	+2.0	+49	+2.2	-0.6	-0.7	+1.5	-0.3	-5.1	-1.6
Acc	95%	58%	90%	90%	84%	70%	85%	77%	66%	75%	75%	72%	65%	53%	39%

REFERENCE SIRE WOODBOURN GALAXY G107 (PB)

Born: 13/09/2011 Colour: Grey Tattoo: 4W G107 Genetic Conditions: AMU, NHU, CAI

Sire: MELALEUCA ARTILLARY A16 (PB)
MELALEUCA ESMERELDA U65 (PB) (AI)

NOTES: An outstanding young bull with great figures across the board. Retained as a sire for his softness, muscle and overall size, this bull is bred in the purple.

Dam: WOODBOURN PEGGY T42 (PB)
WOODBOURN PEGGY P108 (PB)

\$Index Values
Long Fed +\$37 Supermarket +\$41 Heavy Grass +\$60

February 2016 Murray Grey GROUP BREEDPLAN

	GROWTH AND MATERNAL						FERT	CARCASS						CALVING EASE	
	Birth Weight (kg)	Milk (kg)	200-Day Wt (kg)	400-Day Wt (kg)	600-Day Wt (kg)	Mature Cow Wt (kg)	Scrotal Size (cm)	Carcass Wt (kg)	EMA (sq cm)	Rib Fat (mm)	Rump Fat (mm)	Retail Beef Yield %	Intra-Muscular Fat %	Calv. Ease Direct%	Calv. Ease Dtrs %
EBV	+5.1	+7	+33	+48	+68	+71	+0.7	+44	+2.6	-0.2	-0.2	+1.2	+0.0	-5.9	-2.5
Acc	86%	59%	80%	78%	75%	63%	53%	67%	56%	64%	64%	61%	58%	56%	44%

REFERENCE SIRE WOODBOURN KILN K51 (PB)

Born: 27/08/2014 Colour: Silver Tattoo: 4W K51 Genetic Conditions: AMU, NHU, CAI

Sire: WOODBOURN ROCKET MAN A11 (PB)
WOODBOURN AGNES A44 (PB)

NOTES: A joining sire for 25 cows and heifers this year and a member of our sale team. We have always had a soft spot for his sire, Woodbourn Amigo D8, and his dam 4W Y15. We consider him to be an outstanding young sire, who is well above breed average in all boxes. With the introduction of two new sires from WA this year, we, unfortunately do not have room in the sire battery for him. A quiet, thick, mobile young sire.

Dam: MONTEREY TALENT SCOUT (PB)
WOODBOURN PEGGY Y15 (PB)
WOODBOURN PEGGY P108 (PB)

\$Index Values
Long Fed +\$47 Supermarket +\$54 Heavy Grass +\$73

February 2016 Murray Grey GROUP BREEDPLAN

	GROWTH AND MATERNAL						FERT	CARCASS						CALVING EASE	
	Birth Weight (kg)	Milk (kg)	200-Day Wt (kg)	400-Day Wt (kg)	600-Day Wt (kg)	Mature Cow Wt (kg)	Scrotal Size (cm)	Carcass Wt (kg)	EMA (sq cm)	Rib Fat (mm)	Rump Fat (mm)	Retail Beef Yield %	Intra-Muscular Fat %	Calv. Ease Direct%	Calv. Ease Dtrs %
EBV	+4.1	+5	+31	+54	+74	+67		+47	+2.0	+0.0	+0.1	+0.9	+0.0	-1.1	
Acc	78%	50%	71%	70%	67%	55%		58%	42%	48%	48%	46%	42%	42%	

REFERENCE SIRE WOODBOURN KHAN K6 (PB)

Born: 24/03/2014 Colour: Silver Tattoo: 4W K6 Genetic Conditions: AMU, NHU, CAI

Sire: MONTEREY COUGAR C72 (PB)
MELALEUCA GHANDI G112 (PB)
MELALEUCA MINNOW Z95 (PB)

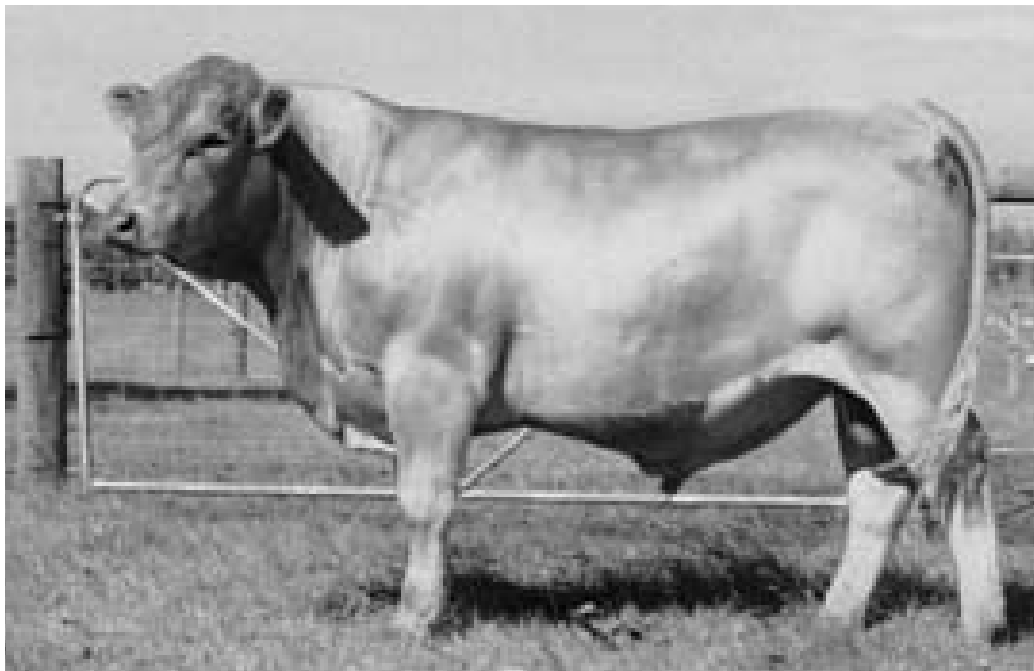
NOTES: Another bull in our sale team, who was used over 30 females in 2015. His moderate birth, high growth and carcass numbers made him an easy choice to use as a yearling. An outstanding bull.

Dam: BUNDLEER PAYDAY P43 (PB)
BYRONFIELD D4 (PB) (AI) (ET)
KYNWOOD SUSAN 994 (PB)

\$Index Values
Long Fed +\$40 Supermarket +\$48 Heavy Grass +\$68

February 2016 Murray Grey GROUP BREEDPLAN

	GROWTH AND MATERNAL						FERT	CARCASS						CALVING EASE	
	Birth Weight (kg)	Milk (kg)	200-Day Wt (kg)	400-Day Wt (kg)	600-Day Wt (kg)	Mature Cow Wt (kg)	Scrotal Size (cm)	Carcass Wt (kg)	EMA (sq cm)	Rib Fat (mm)	Rump Fat (mm)	Retail Beef Yield %	Intra-Muscular Fat %	Calv. Ease Direct%	Calv. Ease Dtrs %
EBV	+4.2	+3	+28	+50	+70	+71	+1.4	+45	+1.9	-1.3	-1.8	+1.9	-0.5	-2.4	
Acc	77%	44%	68%	69%	69%	57%	50%	57%	40%	46%	46%	44%	40%	37%	



Melaleuca Ghandi G112

Joining Sires

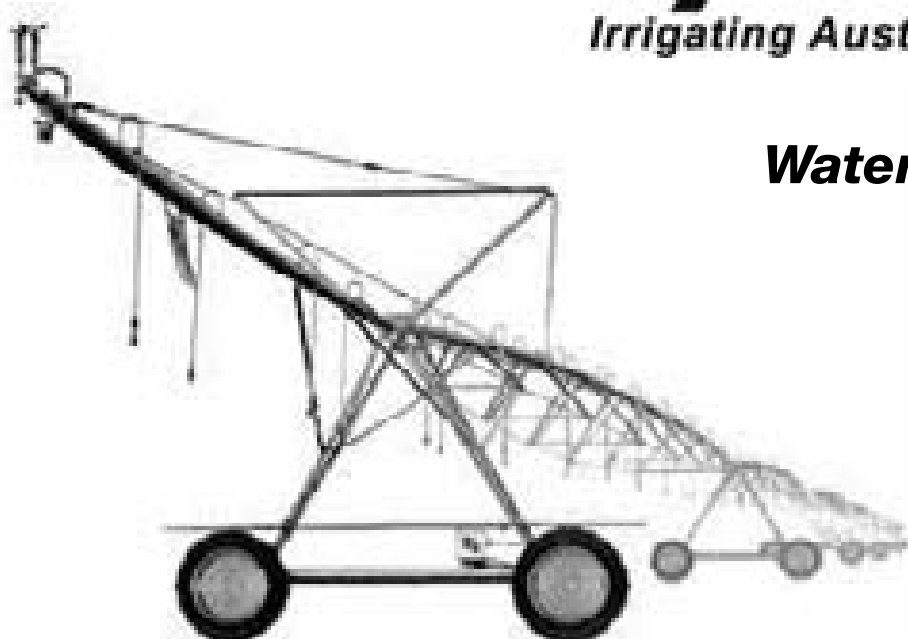
Details and photos of Woodbourn Kiln K51 can be found on pages 12 and 13.

Details and photos of Woodbourn Khan K6 can be found on pages 16 and 17.

**water
dynamics** }
Irrigating Australia

***Water Management
Specialists***

**Longford
03 6397 0900**



WANT PROFESSIONAL INDEPENDENT AND COST EFFECTIVE ACCOUNTING SERVICES?

CAMERONS is the largest locally owned accounting practice in Tasmania. As one of the largest regional accountancy practices in Australia, Camerons is a leading provider of tax, audit and advisory services.

With our expertise and emphasis to deliver innovative and cost-effective services, Camerons is a company that focuses on client success. We at Camerons are proud of our established reputation achieved through objectivity, integrity and independence.

Our focus and ability to deliver impeccable services to our clients has enabled Camerons to advise clients from diverse backgrounds, including small family businesses to large companies within Tasmania and nationally. We value and appreciate each client and their individual circumstances.

BUILDING THE FOUNDATIONS FOR BUSINESS

www.cameronsaa.com.au
info@cameronsaa.com.au
www.facebook.com/Camerons.Tas

Also Visiting:

King Island, Flinders Island, Bicheno,
Deloraine, Smithton, St Helens.

LAUNCESTON

46-54 Cameron Street
PO Box 1368
Launceston TAS 7250
Phone: 03 6337 7777
Fax: 03 6331 7309
AUSDOC DX 70151

SCOTSDALE

24 King Street
PO Box 62
Scottsdale TAS 7260
Phone: 03 6352 9999
Fax: 03 6352 2147
AUSDOC DX 72007

DEVONPORT

26 Forbes Street
PO Box 166
Devonport TAS 7310
Phone: 03 6422 7888
Fax: 03 6424 5498
AUSDOC DX 70304

ULVERSTONE

3a The Quadrant
PO Box 401
Ulverstone TAS 7315
Phone: 03 6425 0666
Fax: 03 6425 5089
AUSDOC DX 70507



CAMERONS

OUR COMPREHENSIVE SERVICES INCLUDE

- Accounting Services -
- Business Advisory Services -
- Audit Services -
- Financial Planning Services -
- Taxation Obligations -
- Personal Insurance -
- MYOB training, support & software -

The high yielding Italian ryegrass for strong stock performance.



Kano delivers proven high dry matter production

- High disease resistance with rapid regrowth after grazing.
- Suitable for most soil types, fertility ranges and stock types.
- If you like Crusader – you will Love Kano and SAVE hundreds of dollars.
- Recommended where quality finishing is required as a winter greenfeed and then spring grazing or where silage is required.
- Used widely to stitch into pastures that have been winter pugged succumbed to summer drought or affected by insect damage.

kano
Italian ryegrass

Sales inquiries contact:

Graham Dent - ph 0408 135 732
e: dentgs@bigpond.com
Specialty Seeds - ph 0419335225
e: specseed@bigpond.com

specialtyseeds
AUSTRALIA'S INDEPENDENT SEED SUPPLIER

The Joke

It was cold and wet outside and Grandmother was helping her grandson put on his boots. Even with her pushing and pulling him, it was near impossible. Finally, she succeeded.

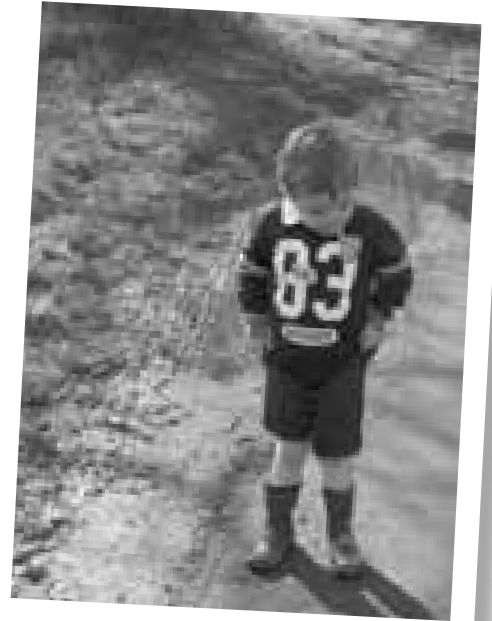
Grandma almost cried when the little bloke said, "They're on the wrong feet." After yet another struggle, Grandma got them off, then back on the right way. As they finished, the boy said, "Grandma, these aren't my boots." Grandma made a supreme effort, calmed herself down and removed the boots yet again. It was a battle but they succeeded.

Barely had the second boot come off when he said, "They're my brother's boots but Mum said I could wear them today."

Not knowing whether to scream or cry, Grandma resumed the battle and got them back on his feet.

The Grandma asked, "It's cold outside. Where are your mittens?"

He answered: "I stuffed them in my boots."



Henry Wallace



Tom Cole

Grandma! It's not that hard!
Go into Settings...select Wi-Fi...
Select it! Tap it with your finger...
oh for goodness sake!

After putting her grandchildren to bed, a grandmother changed into old slacks and a droopy blouse and proceeded to wash her hair.

As she heard the children getting more and more rambunctious, her patience grew thin.

Finally, she threw a towel around her head and stormed into their room, putting them back to bed with stern warnings.

As she left the room, she heard the three-year-old say with a trembling voice, 'Who was THAT?'



Zara Cole

NATIONAL VENDOR DECLARATION (CATTLE) AND WAYBILL C0433 18613560

This form cannot be used where explicitly for the EU market is required.

Part A: To be completed by the owner or person who is responsible for the husbandry of the cattle.

Name of cattle: WARRIORIAN 7/L

Property/Place where the journey commenced: WARRIORIAN, 370 Sandridge Rd, Cray, Tas

Property Identification Code (PIC) of this property: MBLF0134

Description of cattle:

Number	Description of cattle (e.g. breed, sex, age)	Marked or branded or tattooed or numbered
32	BULLS	
12	COWS	
12	CALVES	
18	HEIFERS	
74	Total	

Consigned to: ROBERTS LTD, Western Junction, Tasmania

Destination (if different) of cattle:

ALL declared used on these cattle (number of tag): 74 Number of cattle loaded:

Details of other statutory documents relating to this movement e.g. health statement:

☐ I have any of the cattle in this consignment ever in their lives been treated with a hormonal growth promotant (HGP)? (This is a serious document for meat consignments.)

☐ Yes ☒ No

☐ Have the cattle in this consignment ever in their lives been fed feed containing animal fat?

☐ Yes ☒ No

☐ Has the owner stated above owned these cattle since birth?

☐ Yes ☒ No

☐ If No, how long ago were the cattle obtained or purchased?

☐ If purchased or obtained from, list the last consignment in the form of this form (see example):

☐ I have had 2 months ☐ 3-11 months ☐ 12-23 months ☒ 24 months or more

☐ In the past 60 days, have any of these cattle been fed by-product stockfeed?

☐ Yes ☒ No

☐ In the past 6 months have any of these animals been on a property listed on the BSE database or placed under any restrictions because of chemical residues?

☐ Yes ☒ No

☐ Are any of the cattle in this consignment still within a withholding period (WHP) or Export Slaughter Interval (ESI) or set to require a WHP/ESI, following treatment with any veterinary drug or chemical?

☐ Yes ☒ No

☐ If Yes, give details: (Attach evidence when it applies to)

☐ In the past 60 days, have any of the cattle in this consignment consumed any material that was still within a withholding period when harvested, collected or first ground?

☐ Yes ☒ No

☐ If Yes, give details:

☐ In the past 60 days, were any of these cattle:

☐ all ground in a single feed stream, or

☐ fed feedstuffs that have a withholding period? (See accompanying notes to determine if yes and not yes.)

☐ Yes ☒ No

☐ If Yes, Give details:

☐ Additional Information: (See requirements in Explanatory Notes for completing this document.)

Declaration:

I, C. P. WARRIORIAN, 370 Sandridge Rd, Cray, Tas.

Declare that, I am the owner or the person responsible for the husbandry of the cattle and that all the information in part A of this document is true and correct. I also declare that I have read and understood all the questions that I have answered, that I have read and understood the explanatory notes, and that, while under my control, the cattle were not fed restricted animal material (including feed) and were not in breach of State or Territory legislation.

Signature: C. P. WARRIORIAN Date: 9.5.18

Phone: 0746976375 Fax:

Part B: To be completed by the person in charge of the cattle while they are being moved.

Consignment of this part is subject to Part A and PIC.

Movement commenced: 9.5.18 (dd/mm/yy)

Vehicle registration number(s):

☐ I am the person in charge of the cattle during the movement and declare all the information in Part B is true and correct.

Signature: Date: 9.5.18 Tel:

Other: (See notes for a warning for cattle after vehicle registration is not to be recorded)

Part C: Agency declaration for cattle sold at auction. (Completion of Part B is optional.)

Agency completing Part C should retain the original or a certified copy of the original document as a summary for a minimum of two (2) years, or three (3) years if sold and ready to move or continuing to sale (open or repeat)

Vendor code / No. is: Agent's code:

Block agent company:

Buyer's name: Destination PIC:

No. of cattle purchased: Subsequent arrival time (dd/mm/yy):

Agent's signature: Date: 9.5.18

ROBERTS LTD, 418 Evandale Road, Western Junction or PO Box 656, Launceston. 7250 - PH: (03) 6391 6507 FAX (03) 6391 8631

North:

Warren Johnston 0419 326 348
Tim Woodham 0418 323 425
Jock Gibson 0418 133 595
David Bennett 0439 632 374
Nick Towns 0419 373 602
Cabel Hall 0418 134 448

North-West:

Andrew Porter 0417 142 802
Crichton Horton 0408 834 652
Vernon Philbey 0427 166 033

South:

Chris Cusick 0408 146 022
Rebecca Oakley 0408 146 033
Jamie Woolley 0418 123 798
Peter Skinner 0418 146 997



Elders Rural Services Australia Ltd – Cnr Richard St & Airport Rd, Breadalbane – PO Box 405, Launceston 7250
Ph: (03) 6398 8502 Fax: (03) 6391 8411 www.elders.com.au email: tasmania@elders.com.au

Elders: Greg Harris 0409 799 960

Elders North: Martin Hall 0437 931 939

Elders North: Quentin Davies 0429 641 484

Elders North East: Daniel Morice 0409 170 419

Elders North: Danny Slater 0437 302 266

Elders South: Josh Schrodka 0409 931 812

SUGGESTIONS FOR OUTSIDE AGENTS
ATKINS MARKETING LIVESTOCK: JOHN ATKINS 0428 690 267

REBATE – up to 4% rebate commission offered to outside agents - see sale notes for details.

Woodbourn Buyer's Instruction Slip

Trading Name:
First Name:Surname:
Stud Prefix:Property Ident Code:
Address:
..... Post Code:
Telephone: Mobile:.....
Lots Purchased:
Expected delivery date:
Send account to:

Would you like your bull to be delivered within Tasmania by Charles Wallace ☐Yes ☐No
Please give a map for delivery to Agents on Sale Day

Please tick if stud transfer is required. Members or intending members only ☐ Stud ident.

Please complete the insurance proposal supplied at the sale.

Vendor declaration is on page 46. ☐ Registered name with Society.....

SIGNATURE:DATE: 9th MAY 2016

SPECIAL NOTICE TO BUYERS

1. In the interest of buyers and to prevent the occurrence of mistakes, all instructions concerning delivery, trucking or shipping of cattle must be given in writing and signed by the buyer or his representative.
2. Instructions for despatch of consignments comprising more than one owner must be signed by each buyer; no instructions will be considered complete until all have signed.

NO VERBAL INSTRUCTIONS CAN BE ACCEPTED

IMPORTANT NOTICES FOR PURCHASERS

~ SALE CATALOGUE DISCLAIMER ~

"All reasonable care has been taken by the vendor to ensure that the information provided in this catalogue is correct at the time of publication. However, neither the vendor or the selling agents make no other representations about the accuracy, reliability or completeness of any information provided in this catalogue and do not assume any responsibility for the use or interpretation of the information included in this catalogue. You are encouraged to seek independent verification of any information contained in this catalogue before relying on such information."

~ PRIVACY INFORMATION ~

The animals included in this catalogue are registered with the Murray Grey Society of Australia. The buyer is encouraged to have transferred to it the registration of any animals purchased. In order for this transaction to be effected, the buyer will need to provide certain personal information to the Society and consent to the collection and disclosure of that information by the Society in certain circumstances. If the buyer does not wish for his or her personal information to be collected and disclosed by the Society, the buyer must opt out of the option to consent by completing the form included below and forwarding it to the Society. If the form is not completed, the buyer will be taken to have consented to the collection and disclosure of that information by the Society.

BUYER'S OPTION TO OPT OUT OF DISCLOSING PERSONAL INFORMATION TO THE MURRAY GREY CATTLE SOCIETY OF AUSTRALIA

If you do not complete this form, you will be taken to have consented to the Murray Grey Cattle Society of Australia using your name, address and phone number for the purposes of effecting a change of registration of the animal(s) that you have purchased, maintaining its databases and disclosing that information to its members on its website.

I, the buyer of animals with the following registration numbers

.....
from Society member (name)

do not consent to the Murray Grey Cattle Society of Australia using my name, address and phone number for the purposes of effecting a change of registration of the following animal(s) that I have purchased, maintaining its databases and disclosing that information to its members on its website.

Signature: Date:

*Please forward this completed consent form to the
Murray Grey Cattle Society of Australia,
ABRI, Armidale NSW 2350.*

If you have any queries, please telephone 02 6771 5151.



*Charles and Janet Wallace
thank you for your support.*



100
101
102
103
104
105
106
107
108
109
110
111
112
113
114
115
116
117
118
119
120
121
122
123
124
125
126
127
128
129
130
131
132
133
134
135
136
137
138
139
140
141
142
143
144
145
146
147
148
149
150
151
152
153
154
155
156
157
158
159
160
161
162
163
164
165
166
167
168
169
170
171
172
173
174
175
176
177
178
179
180
181
182
183
184
185
186
187
188
189
190
191
192
193
194
195
196
197
198
199
200
201
202
203
204
205
206
207
208
209
210
211
212
213
214
215
216
217
218
219
220
221
222
223
224
225
226
227
228
229
230
231
232
233
234
235
236
237
238
239
240
241
242
243
244
245
246
247
248
249
250
251
252
253
254
255
256
257
258
259
260
261
262
263
264
265
266
267
268
269
270
271
272
273
274
275
276
277
278
279
280
281
282
283
284
285
286
287
288
289
290
291
292
293
294
295
296
297
298
299
300
301
302
303
304
305
306
307
308
309
310
311
312
313
314
315
316
317
318
319
320
321
322
323
324
325
326
327
328
329
330
331
332
333
334
335
336
337
338
339
340
341
342
343
344
345
346
347
348
349
350
351
352
353
354
355
356
357
358
359
360
361
362
363
364
365
366
367
368
369
370
371
372
373
374
375
376
377
378
379
380
381
382
383
384
385
386
387
388
389
390
391
392
393
394
395
396
397
398
399
400
401
402
403
404
405
406
407
408
409
410
411
412
413
414
415
416
417
418
419
420
421
422
423
424
425
426
427
428
429
430
431
432
433
434
435
436
437
438
439
440
441
442
443
444
445
446
447
448
449
450
451
452
453
454
455
456
457
458
459
460
461
462
463
464
465
466
467
468
469
470
471
472
473
474
475
476
477
478
479
480
481
482
483
484
485
486
487
488
489
490
491
492
493
494
495
496
497
498
499
500
501
502
503
504
505
506
507
508
509
510
511
512
513
514
515
516
517
518
519
520
521
522
523
524
525
526
527
528
529
530
531
532
533
534
535
536
537
538
539
540
541
542
543
544
545
546
547
548
549
550
551
552
553
554
555
556
557
558
559
560
561
562
563
564
565
566
567
568
569
570
571
572
573
574
575
576
577
578
579
580
581
582
583
584
585
586
587
588
589
590
591
592
593
594
595
596
597
598
599
600
601
602
603
604
605
606
607
608
609
610
611
612
613
614
615
616
617
618
619
620
621
622
623
624
625
626
627
628
629
630
631
632
633
634
635
636
637
638
639
640
641
642
643
644
645
646
647
648
649
650
651
652
653
654
655
656
657
658
659
660
661
662
663
664
665
666
667
668
669
670
671
672
673
674
675
676
677
678
679
680
681
682
683
684
685
686
687
688
689
690
691
692
693
694
695
696
697
698
699
700
701
702
703
704
705
706
707
708
709
710
711
712
713
714
715
716
717
718
719
720
721
722
723
724
725
726
727
728
729
730
731
732
733
734
735
736
737
738
739
740
741
742
743
744
745
746
747
748
749
750
751
752
753
754
755
756
757
758
759
760
761
762
763
764
765
766
767
768
769
770
771
772
773
774
775
776
777
778
779
780
781
782
783
784
785
786
787
788
789
790
791
792
793
794
795
796
797
798
799
800
801
802
803
804
805
806
807
808
809
810
811
812
813
814
815
816
817
818
819
820
821
822
823
824
825
826
827
828
829
830
831
832
833
834
835
836
837
838
839
840
841
842
843
844
845
846
847
848
849
850
851
852
853
854
855
856
857
858
859
860
861
862
863
864
865
866
867
868
869
870
871
872
873
874
875
876
877
878
879
880
881
882
883
884
885
886
887
888
889
890
891
892
893
894
895
896
897
898
899
900
901
902
903
904
905
906
907
908
909
910
911
912
913
914
915
916
917
918

100. The following are the components of the **business plan** except:

101. **Executive Summary**

102. **Market Analysis**

103. **Financial Projections**

104. **Management Team**

105. **Appendix**

106. **References**

107. **Notes**

108. **Conclusion**

109. **Disclaimer**

110. **Appendix**

111. **References**

112. **Notes**

113. **Conclusion**

114. **Disclaimer**

115. **Appendix**

116. **References**

117. **Notes**

118. **Conclusion**

119. **Disclaimer**

120. **Appendix**

121. **References**

122. **Notes**

123. **Conclusion**

124. **Disclaimer**

125. **Appendix**

126. **References**

127. **Notes**

128. **Conclusion**

129. **Disclaimer**

130. **Appendix**

131. **References**

132. **Notes**

133. **Conclusion**

134. **Disclaimer**

135. **Appendix**

136. **References**

137. **Notes**

138. **Conclusion**

139. **Disclaimer**

140. **Appendix**

141. **References**

142. **Notes**

143. **Conclusion**

144. **Disclaimer**

145. **Appendix**

146. **References**

147. **Notes**

148. **Conclusion**

149. **Disclaimer**

150. **Appendix**

151. **References**

152. **Notes**

153. **Conclusion**

154. **Disclaimer**

155. **Appendix**

156. **References**

157. **Notes**

158. **Conclusion**

159. **Disclaimer**

160. **Appendix**

161. **References**

162. **Notes**

163. **Conclusion**

164. **Disclaimer**

165. **Appendix**

166. **References**

167. **Notes**

168. **Conclusion**

169. **Disclaimer**

170. **Appendix**

171. **References**

172. **Notes**

173. **Conclusion**

174. **Disclaimer**

175. **Appendix**

176. **References**

177. **Notes**

178. **Conclusion**

179. **Disclaimer**

180. **Appendix**

181. **References**

182. **Notes**

183. **Conclusion**

184. **Disclaimer**

185. **Appendix**

186. **References**

187. **Notes**

188. **Conclusion**

189. **Disclaimer**

190. **Appendix**

191. **References**

192. **Notes**

193. **Conclusion**

194. **Disclaimer**

195. **Appendix**

196. **References**

197. **Notes**

198. **Conclusion**

199. **Disclaimer**

200. **Appendix**

201. **References**

202. **Notes**

203. **Conclusion**

204. **Disclaimer**

205. **Appendix**

206. **References**

207. **Notes**

208. **Conclusion**

209. **Disclaimer**

210. **Appendix**

211. **References**

212. **Notes**

213. **Conclusion**

214. **Disclaimer**

215. **Appendix**

216. **References**

217. **Notes**

218. **Conclusion**

219. **Disclaimer**

220. **Appendix**

221. **References**

222. **Notes**

223. **Conclusion**

224. **Disclaimer**

225. **Appendix**

226. **References**

227. **Notes**

228. **Conclusion**

229. **Disclaimer**

230. **Appendix**

231. **References**

232. **Notes**

233. **Conclusion**

234. **Disclaimer**

235. **Appendix**

236. **References**

237. **Notes**

238. **Conclusion**

239. **Disclaimer**

240. **Appendix**

241. **References**

242. **Notes**

243. **Conclusion**

244. **Disclaimer**

245. **Appendix**

246. **References**

247. **Notes**

248. **Conclusion**

249. **Disclaimer**

250. **Appendix**

251. **References**

252. **Notes**

253. **Conclusion**

254. **Disclaimer**

255. **Appendix**

256. **References**

257. **Notes**

258. **Conclusion**

259. **Disclaimer**

260. **Appendix**

261. **References**

262. **Notes**

263. **Conclusion**

264. **Disclaimer**

265. **Appendix**

266. **References**

267. **Notes**

268. **Conclusion**

269. **Disclaimer**

270. **Appendix**

271. **References**

272. **Notes**

273. **Conclusion**

274. **Disclaimer**

275. **Appendix**

276. **References**

277. **Notes**

278. **Conclusion**

279. **Disclaimer**

280. **Appendix**

281. **References**

282. **Notes**

283. **Conclusion**

284. **Disclaimer**

285. **Appendix**

286. **References**

287. **Notes**

288. **Conclusion**

289. **Disclaimer**

290. **Appendix**

291. **References**

292. **Notes**

293. **Conclusion**

294. **Disclaimer**

295. **Appendix**

296. **References**

297. **Notes**

298. **Conclusion**

299. **Disclaimer**

300. **Appendix**

301. **References**

302. **Notes**

303. **Conclusion**

304. **Disclaimer**

305. **Appendix**

306. **References**

307. **Notes**

308. **Conclusion**

309. **Disclaimer**

310. **Appendix**

311. **References**

312. **Notes**

313. **Conclusion**

314. **Disclaimer**

315. **Appendix**

316. **References**

317. **Notes**

318. **Conclusion**

319. **Disclaimer**

320. **Appendix**

321. **References**

322. **Notes**

323. **Conclusion**

324. **Disclaimer**

325. **Appendix**

326. **References**

327. **Notes**

328. **Conclusion**

329. **Disclaimer**

330. **Appendix**

331. **References**

332. **Notes**

333. **Conclusion**

334. **Disclaimer**

335. **Appendix**

336. **References**

337. **Notes**

338. **Conclusion**

339. **Disclaimer**

340. **Appendix**

341. **References**

342. **Notes**

343. **Conclusion**

344. **Disclaimer**

345. **Appendix**

346. **References**

347. **Notes**

348. **Conclusion**

349. **Disclaimer**

350. **Appendix**

351. **References**

352. **Notes**

353. **Conclusion**

354. **Disclaimer**

355. **Appendix**

356. **References**

357. **Notes**

358. **Conclusion**

359. **Disclaimer**

360. **Appendix**

361. **References**

362. **Notes**

363. **Conclusion**

364. **Disclaimer**

365. **Appendix**

366. **References**

367. **Notes**

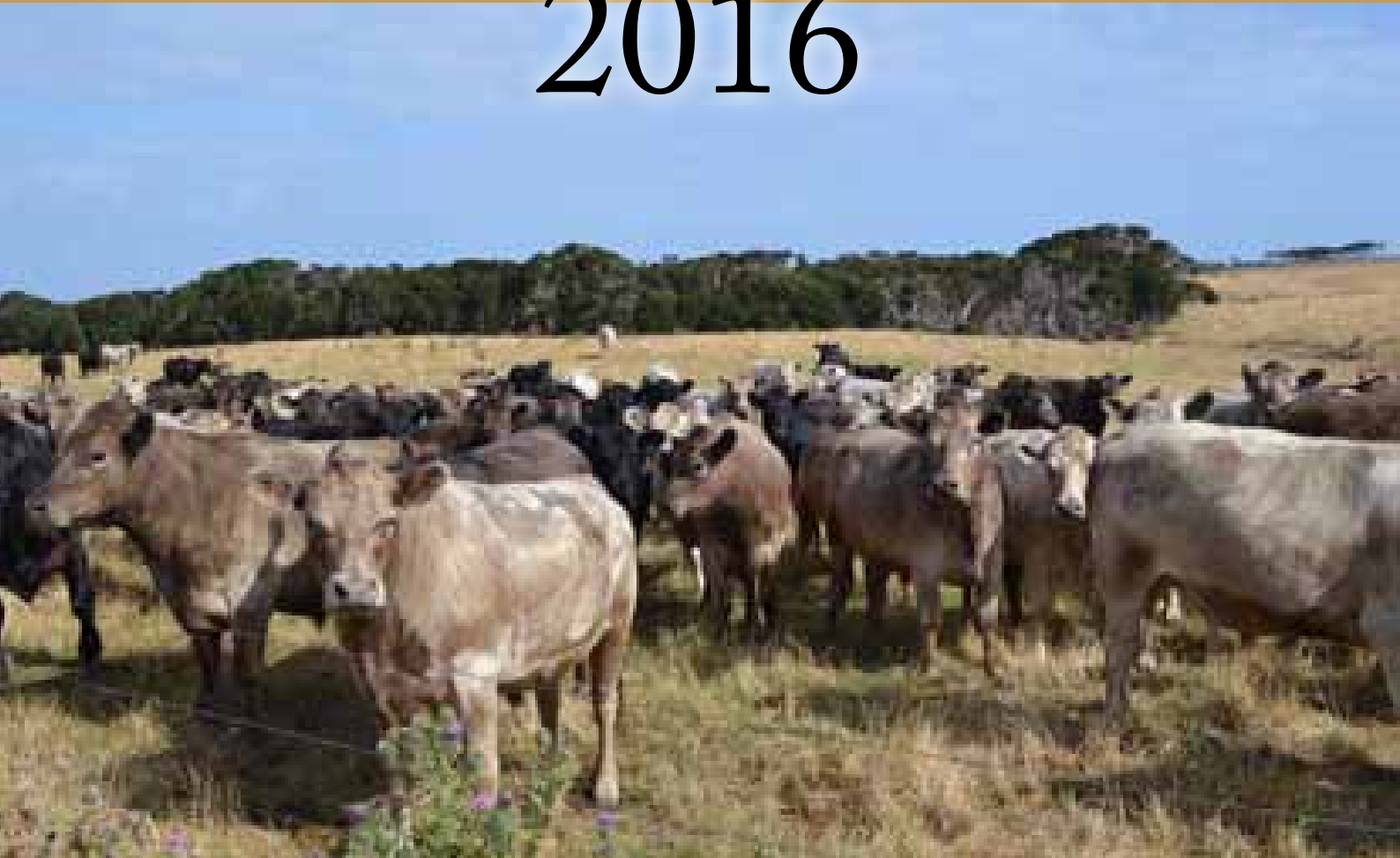
368.



Magnificent Weaner Progeny from Woodbourn Genetics.
With thanks to Rob Paton and Neil and Julie Williams of Cawood, Ouse.



2016



Magnificent Progeny from Woodbourn Genetics. With thanks to the Bowling Family, King Island.

Woodbourn



MISSION STATEMENT

Woodbourn strives to source and make available, superior genetics to maximise profitability for its clients in an atmosphere of trust, reliability and good humour.

Contacts: Charles Wallace: 03 6397 6285, 0409 397 628 • Lauchie Cole: 03 6397 6391, 0419 150 808
Woodbourn, 391 Saundridge Road, Cressy, Northern Tasmania, 7302