

Woodbourn 2025

EST. 1969 56 years



live on farm auction interfaced with AuctionsPlus

46th Annual Sale

Monday 24th March 2025, 12.30pm

Woodbourn, Cressy, Northern Tasmania

Offering: 38 Bulls • 28 Females



Free freight to Melbourne, Bass Strait Islands and within Tasmania on all registered animals
(see inside for details)

The future

Next years potential sale animals



Magnificent weaner bulls at 8 months



Woodbourn matrons with their handsome bull calves at foot



Beautiful, soft, feminine, weaner heifers at 8 months

Terms and conditions will be available, on request, from the selling agents.

CONTACT

Charles Wallace
Woodbourn
390 Saundridge Road
Cressy 7302
TASMANIA

Charles Wallace:
0409 397 628
E: wallace@intas.net.au

Janet Wallace
- 0407 054 018

Lauchlan Cole
- 0419 150 808

Ben Lane
- 0439 224 211

AGENTS

Nutrien
Livestock™

Nutrien Tasmania
- 6391 6555

Allira Grosz
(Stud stock admin)
- 6391 6539

Jock Gibson
(Stud Stock)
- 0418 133 595

Cooper Lamprey
(Stud Stock)
- 0429 304 110

Warren Johnston
- 0419 326 348

David Bennett
- 0439 632 374

Mark Lamprey
- 0447 085 208

Peter Skinner
- 0418 146 997

George Nichols
- 0455 550 232

Nutrien mainland

Tim Woodham
(Stud Stock)
- 0436 015 115

Peter Godbolt
- 0457 591 929

4% rebate to
outside agents
(See page 4 for details)

Other Agents

AML

John Atkins
- 0428 690 267

Elders

Ross Milne
- 0408 057 558

Russell Cowan
- 0418 346 339

Chris Cusick
- 0418 884 481

Michael Glasser
- 0403 526 702

WOODBOURN MURRAY GREY SALE

A.B.N. 87 605 256 807

EST. 1969



46th Annual Production Sale

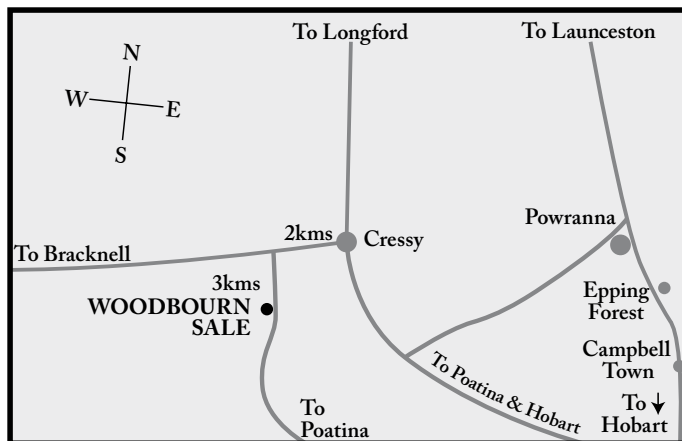
Live on farm auction
interfaced with AuctionsPlus

Monday 24th March 2025 at 12.30pm

Offering: 38 Bulls • 28 Females



PLEASE BRING YOUR CATALOGUE TO THE SALE
AS THERE WILL BE LIMITED SPARE COPIES AVAILABLE



HOW TO GET THERE (Woodbourn is 20 minutes from Launceston Airport)
Address: Woodbourn, 390 Saundridge Road Cressy, Tasmania

From the north, north west and north east
Get to Longford and travel due south through to Cressy (10kms). Turn right between the church and the school and travel 2 kms. Turn left and travel for 3kms. Sale is on your right.

From the South
Get to Epping Forest and continue 10km to Powranna where the sign directs you to Cressy. Continue on this road (21 kms) to a T section. Turn right to Cressy and then left between the church and the school in the Cressy township. Proceed 2kms, turn left and travel 3kms. Sale is on the right.



Charles and Janet Wallace

**56 years of breeding
Murray Greys**

WELCOME



To all those cattle breeders interested in Murray Grey cattle, I welcome you to the 46th on farm Woodbourn Murray Grey sale, here at Cressy, Northern Tasmania. My wife, Janet, and I enjoy breeding these magnificent grey cattle and the catalogue we present to you here, we believe has a lot to offer.

Woodbourn was the second Murray Grey breeder to adopt Breedplan and we have a strong belief in its value as an objective assessment tool. The cattle we offer here have enviable Breedplan figures with the 38 bulls for sale having a selection of exceptional figures to suit all markets. The quality of these figures reflect the quality of the bulls. Over the years we have put high emphasis on fats and general carcase strength, especially IMF and it is paying off. Our clients have appreciated this easy doing attribute, with cows maintaining body weight through tough conditions and having the ability to get back in calf on less feed.

We are always looking for new bloodlines to introduce into the Woodbourn herd, not only as an outcross for our herd, but to offer new bloodlines for our clients. It is not always easy to find a new sire who fits our strict criteria of shape, correctness, calm temperament, size and appeal as well as outstanding Breedplan figures, but we always manage to locate and purchase these sires.

It is exciting to see these 38 bulls lined up. These bulls are readied for sale on grass and silage. There is no grain fed to any Woodbourn animals in their life, and obviously we do not feed grain to the bulls to prepare them for sale. They are well grown, strong, correct, calm and very appealing animals and we are sure you will find a Woodbourn bull to suit your needs and that is relevant to the beef industry.

Females represent strength in any herd and that certainly applies at Woodbourn. The Woodbourn matrons are well grown, correct, feminine females who breed very well every year. From this impressive herd of Murray Grey cows, we have selected eight to offer to you. They are mature females with a calf at foot and in calf again; a three in one package. The eleven heifers on offer are beautiful soft, well grown, feminine females. This year we are also offering a very good line of commercial heifers.

The cattle market has gained strength and is continuing to climb. Let's hope the year ahead is good for all of us. The world is desperate for protein, and demand is increasing from many countries, especially the US.

Please read the sale notes carefully, especially the transport subsidy offered by Woodbourn and the health notes, including Myostatin NT821 and BVDV.

We look forward to seeing you on sale day. It is a very happy day. If you cannot come in person, the sale is interfaced with Auctions Plus and of course, you can organise phone bidding with one of the agents.

Thankyou for your support of our cattle.



Charles and Janet

The Woodbourn Breeding Policy

At Woodbourn we believe that breeding for structural soundness, an acceptable type and a quiet temperament, is the basis on which any successful breeding policy should be based. In selecting our breeding stock, we ensure they are well above breed average.

In addition, we have embraced the use of technology, with the incorporation of Breedplan into our program. Breedplan quantifies important economic traits such as birthweight, growth, milk, carcase and fertility, which assist in determining profitability. It beats guess work.

A word of caution; Breedplan does not select the best animal for all situations. That is the role of the breeder. In some environments or breeding systems, the animal with the highest figures may not be the most appropriate animal to buy.

How to register as an AuctionsPlus user/buyer

1. To sign up to AuctionsPlus, fill in your details and create a security PIN.
2. Verify your email and phone number.
3. Follow the steps to verify your ID.
4. Enter your PIC number, ABN and business details if relevant.
5. Carefully read and accept our user rules and responsibilities.
6. Complete the user quiz.
7. Submit your request to our team.



Scan to sign up now



Scan to see detailed
step by step instructions

www.auctionsplus.com.au



(02) 9262 4222

NB: As the live bidding on sale day is in conjunction with the AuctionsPlus bidding system, it is imperative that bids on AuctionsPlus are made quickly to avoid issues with the time lag.

To bid from home on Auctions Plus you must register with Auctions Plus at least 2 working days prior to the Sale. Alternatively you can bid using your local Livestock Agent. We recommend if you are not familiar with using Auctions Plus that you use your local agent to do the bidding. There will be a live Audio feed of the Sale and Photos of all lots on the Auctions Plus Website.

If you would like to talk to an agent about this process, please ring Jock Gibson, 0418 133 595.

Photos: In keeping with Auctions Plus requirements, photos of all lots will be on the Auctions Plus site, and the Murray Grey Cattle Society website. (All photos of sale cattle are taken by Charles and Janet Wallace). Videos are available on Auctions Plus.

WOODBOURN SALE NOTES

1. Rebate

A rebate of 4% will be paid to outside agents accompanying buyers on sale day, provided that they have nominated the buyer in writing 24 hours prior to the sale and settle on their behalf within 7 days of the sale. A rebate of 2% will be paid to outside agents who do not attend the sale, but who nominate a buyer at least 24 hours prior to the sale and settle on the buyer's behalf within 7 days. In all cases the agent must be nominated on the Buyer's Registration form. Please email livestocktas@nutrien.com.au.

2. Livestock Transport

WOODBOURN WILL PAY THE FREIGHT TO MELBOURNE AND KING ISLAND ON ALL ANIMALS SOLD AT AUCTION EXCEPT COMMERCIAL CATTLE.

Free freight to the mainland and King Island is dependent on all cattle moving as one, as has been the case for many years. If sale cattle are moved individually, the purchaser will carry all expenses associated with freight.

PLUS: Woodbourn will contribute \$250 towards road freight from Melbourne on each lot bought at auction and which fits the criteria below. Bulls and mature females above \$6000 and heifers above \$5000.

3. Guarantee

All cattle are covered by the Woodbourn guarantee. The bulls are inspected and semen tested and are in the best possible health for the sale. In the unlikely event of a bull becoming infertile or incapable of natural service, within two years of the sale date, the vendor will supply a suitable replacement, if available, or credit the purchase price, less salvage without interest, costs or damages, to be used at the next sale on any one animal. This is on the provision that the problem was not caused by injury, disease or environmental factors after the fall of the hammer.

The first year 100% will be refunded less salvage, the second year 50% will be refunded less salvage. Any claim must be accompanied by a veterinary certificate.

Woodbourn will not be held liable for loss of income in the event of empty cows.

Insurance is highly recommended and is your responsibility from the fall of the hammer.

We strongly recommend you observe your new bull when he is first introduced to the cows and if you have any concerns, please do not hesitate to contact us.

4. Morning tea and lunch

Please join us from 10.00am for morning tea and for lunch at 11.30am before the sale.

5. Western Australia

Woodbourn sale cattle qualify for entry into WA.

6. Group Breedplan

Murray Grey Group Breedplan has been used throughout the catalogue. All cattle are birth weighed, growth weighed and carcass scanned.

A comprehensive set of Breedplan figures is under each bull and female lot.

7. Feeding regime

All cattle have been raised under natural conditions with no grain or pellets. We are regularly audited as a "no grain" herd.

8. Feet

Foot trimming is not conducted at Woodbourn.

9. Animal Health

Bulls: All bulls have been vaccinated twice in the year prior to the sale with 7 in 1, Pestigard, and Vibrovax. We recommend booster shots on an annual basis.

Females: All adult cows have been vaccinated once in the year prior to the sale with 7 in 1 and Pestigard. Heifers have been vaccinated twice in the year prior to the sale with 7 in 1 and Pestigard.

We recommend booster shots on an annual basis.

10. Myostatin NT 821.

All sale bulls have been tested as non carriers of Myostatin NT821.

All calves at foot have been tested as non carriers of Myostatin NT821.

Commercial cattle have not been tested.

11. Pestivirus

All sale cattle have been ear notched for Pestivirus and found to be negative.

12. Semen tested

All bulls were examined and semen tested by Northern Midlands Veterinary Services and found to be sound for breeding.

13. DNA

All sale bulls and registered heifers have been DNA profiled and sire verified, as have the calves at foot, except one pending (Lot 39).

14. Joining sires

Lots 1, 2 and 3 have been used in the spring as joining sires. Please take this into consideration when assessing these bulls.

WOODBOURN SALE NOTES *continued*

15. Murray Grey Society stud registration transfers

All registered cattle are eligible for stud registration transfer. Stud transfers will not be issued on cows and calves under \$4000 and under \$3000 on heifers.

16. Inspection

Cattle may be viewed on Sunday 23rd March from 1pm until 3pm, in their paddock and from 10.00am on sale day, 24th March.

17. Insurance

Please insure your purchase as the animal's ownership transfers on the fall of the hammer. We recommend Nutrien Insurance or Adrian Wright of Steadfast Insurance who will be in attendance on the day.

18. Stock travel

The agents will organise all cattle movements to the mainland and King Island. Woodbourn will deliver Tasmanian cattle upon request. The truck will be slightly bigger this year and there will be a different driver. Cattle purchased for delivery for northern NSW and QLD will be spelled in southern NSW before continuing north, if required.

19. Buyer's instruction slip

Please leave clear instructions, on the buyers instruction page, with the agents at the conclusion of the sale.

Please write your first name, surname and phone number clearly.

20. Safety

Under normal conditions our bulls and females are placid and quiet, however, care must be taken when inspecting sale animals as crowd pressure can alter their behaviour. Please do not crowd the bulls, and please ask for assistance if you would like a closer inspection, or are feeling at all nervous. Visitors enter the pens at their own risk. Children must not enter the pens at any time.

21. Supplementary sheets

Supplementary sheets will have weights, scrotal and frame scores prior to the sale.

22. GST

The cattle sold GST exclusive and will be invoiced with GST included.

23. Johnes status

Woodbourn is J BAS 6

24. Withdrawals

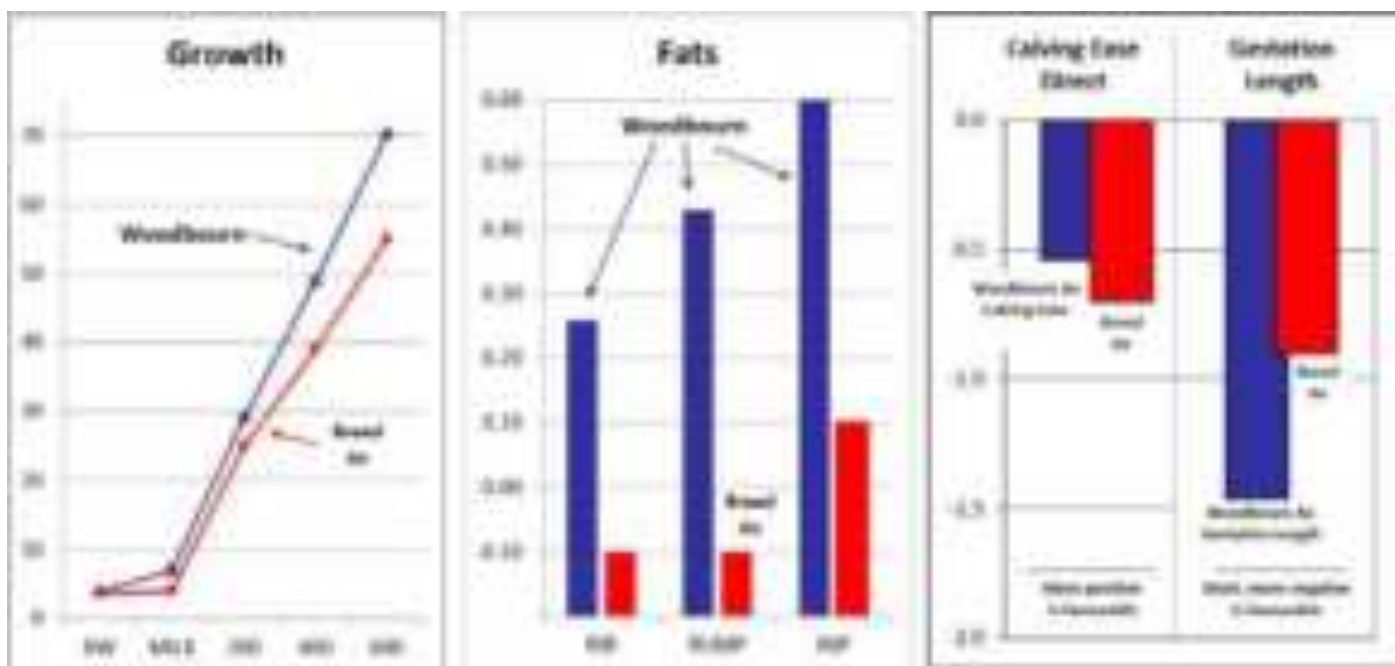
Cattle are only withdrawn from the catalogue on the advice of a vet, or injury.



SALE CATALOGUE DISCLAIMER

All reasonable care has been taken by the vendor to ensure that the information provided in this catalogue is correct at the time of publication. However, neither the vendor or the selling agents make no other representations about the accuracy, reliability or completeness of any information provided in this catalogue and do not assume any responsibility for the use or interpretation of the information included in this catalogue. You are encouraged to seek independent verification of any information contained in this catalogue before relying on such information.

Woodbourn sale bulls average EBV's against Murray Grey Breed Average



Understanding EBV's

An animal's breeding value is its genetic merit, half of which will be passed on to its progeny. The absolute value of any EBV is not critical, but rather the differences in EBVs between animals.

Calving Ease EBVs (%) are based on calving difficulty scores, birth weights and gestation length information. More positive EBVs are favourable and indicate easier calving.

Gestation Length EBV (days) is an estimate of the time from conception to the birth of the calf and is based on AI and hand mating records. Lower (negative) Gestation Length EBVs indicate shorter gestation length and therefore easier calving and increased growth after birth.

Birth Weight EBV (kg) is based on the measured birth weight of progeny, adjusted for dam age. The lower the value the lighter the calf at birth and the lower the likelihood of a difficult birth.

200-Day Growth EBV (kg) is calculated from the weight of progeny taken between 80 and 300 days of age. Values are adjusted to 200 days and for age of dam. This EBV is the best single estimate of an animal's genetic merit for growth to early ages.

400-Day Weight EBV This EBV is the best single estimate of an animal's genetic merit for yearling weight.

600-Day Weight EBV This EBV is the best single estimate of an animal's genetic merit for growth beyond yearling age.

Milk EBV (kg) is an estimate of an animal's milking ability. For sires, this EBV indicates the effect of the daughter's milking ability, inherited from the sire. For dams, it indicates her milking ability.

Scrotal Size EBV This EBV is an estimate of an animal's genetic merit for scrotal size.

Eye Muscle Area EBV (sq cm) is calculated from measurements from live animal ultrasound scans. More positive EBVs indicate better muscling on animals.

Rib Fat and Rump Fat EBVs (mm) are calculated from measurements of subcutaneous fat depth. Sires with low, or negative, fat EBVs are expected to produce leaner progeny at any particular carcass weight than will sires with higher EBVs.

Intramuscular Fat EBV Estimate of the genetic difference in the percentage of intramuscular fat at the 12/13th rib site in a 300 kg carcass. Depending on market, larger more positive values are generally more favourable.



WOODBOURN
PROPERTY GROUP



WOODBOURN
PROPERTY GROUP

EBV Summary for The Woodbourn Sale

A comprehensive set of figures is under each bull and female lot.

Lot	Ident	CE DIR	CE DTR	GL	BW	200	400	600	MCW	MILK	SS	DTC	CW	EMA	RIB	RUIJP	RBV	IMF
1	4W U101	+1.2	+0.8	-0.9	+3.2	+24	+46	+65	+76	+10	+0.7		+39	+0.0	+0.6	+0.8	-0.5	+0.7
2	4W U72	-1.5	+0.5	-0.7	+5.0	+32	+52	+73	+79	+4	+0.8		+47	+2.2	+0.2	+0.3	+0.8	+0.2
3	4W U136	+1.7	-1.6	-0.3	+3.3	+27	+45	+60	+66	+14	+0.2		+39	+1.4	+1.9	+2.8	-0.8	+0.9
4	4W U95	-3.1	-0.6	-2.2	+5.6	+36	+61	+90	+96	+5	+0.3	-1.9	+52	+1.4	-0.3	-0.4	+0.4	+1.1
5	4W U114	-3.2	+0.2	-0.9	+5.6	+35	+55	+90	+105	+9	+0.3	-2.1	+52	+1.5	+0.8	+1.1	-0.1	+1.6
6	4W U141	+0.1	+1.5	-2.2	+3.7	+36	+54	+77	+82	+9	-0.5	-2.0	+52	+1.8	+0.7	+1.2	+0.4	+0.5
7	4W U89	-1.1	+0.9	-1.6	+5.3	+35	+61	+92	+99	+9	+0.6	-2.4	+55	+1.2	-1.1	-1.4	+1.2	+0.1
8	4W U65	-1.9	-1.8	-0.4	+6.7	+37	+50	+92	+103	+7	+1.3	-4.6	+51	+1.5	-0.7	-0.9	+1.5	+0.3
9	4W U148	+2.2	+0.1	-2.1	+3.1	+31	+55	+81	+86	+10	+0.0		+56	+2.4	-0.4	-0.5	+1.4	+0.3
10	4W U108	-3.7	+1.0	-1.2	+5.2	+35	+53	+71	+74	+6	+0.1		+45	+1.3	+0.8	+1.3	+0.2	+0.4
11	4W U124	-2.0	-0.8	-0.2	+4.4	+24	+40	+62	+73	+6	+1.1		+39	+1.4	-0.8	-1.2	+1.5	+0.0
12	4W U2	+0.2	+0.1	-2.9	+3.5	+33	+54	+78	+78	+7	+0.3	-0.7	+57	+3.1	-1.6	-2.1	+3.0	-0.6
13	4W U8	-3.2		-0.9	+5.1	+32	+62	+86	+85	+4	+0.4		+55	+3.7	-1.0	-1.2	+2.1	+0.8
14	4W U28	-2.8	+0.3	-1.3	+4.5	+33	+45	+66	+68	+8	+0.3	-4.0	+41	+1.2	+1.6	+2.4	-0.1	+0.5
15	4W U31	+2.1	-0.8	-2.5	+3.0	+30	+57	+73	+67	+8	+0.6	-2.8	+48	+1.4	+0.2	+0.3	+0.2	+0.5
16	4W U18	-4.8	-3.3	-0.4	+6.3	+35	+62	+92	+97	+9	+0.5	-1.6	+56	+3.5	-0.6	-0.7	+2.1	+0.6
17	4W U29			-1.6	+2.6	+22	+46	+63	+51	+7			+36	+1.8	-1.0	-1.0	+1.2	+1.3
18	4W U49	+0.0	-4.1	-0.7	+4.5	+27	+47	+60	+55	+10	+0.5	-3.5	+36	+0.5	+1.2	+1.7	-0.6	+0.9
19	4W U66	-2.9	+1.2	-1.6	+5.0	+33	+67	+90	+99	+4	+0.6	-1.8	+57	+2.5	+0.3	+0.5	+0.2	+1.2
20	4W U94	+1.6	+0.9	-2.2	+2.1	+30	+41	+63	+62	+12	-0.5	-1.0	+44	+0.8	-0.8	-1.0	+1.1	+0.3
21	4W U79	+3.2	-1.5	-1.8	+2.4	+23	+44	+63	+64	+4	+0.6		+40	+2.0	+1.0	+1.3	+0.0	+0.6
22	4W U159	-4.1	+0.6	-1.6	+5.1	+37	+54	+73	+78	+3	-0.3	-1.2	+51	+2.0	-0.4	-0.5	+1.7	-0.2
23	4W U170	-2.5	-0.3	-1.6	+5.3	+35	+57	+85	+96	+8	+1.0	-5.0	+50	+1.8	+1.4	+1.9	-0.3	+1.0
24	4W U71	+0.9	-3.3	-2.1	+4.4	+29	+44	+69	+65	+7	+0.6	-3.0	+41	+2.1	-0.4	-0.5	+1.5	+0.0
25	4W U56	+0.7	-1.7	-1.6	+3.5	+23	+40	+54	+47	+4	+0.8	-4.1	+33	+2.4	+0.8	+1.1	+0.6	+0.2
26	4W U100	+0.4	-0.1	-1.2	+3.6	+26	+42	+64	+70	+8	+0.8	-3.8	+37	+0.5	-0.5	-0.6	+0.6	+0.0
27	4W U155	-1.1		-1.6	+4.4	+29	+50	+72	+73	+5	+0.5		+41	+1.0	-1.0	-1.0	+1.2	+1.1
28	4W U86	-0.8		-1.0	+4.1	+31	+51	+73	+80	+12	+0.5		+46	+1.8	+1.4	+1.9	-0.4	+0.9
29	4W U73	-4.7	-0.2	-1.5	+5.5	+33	+53	+80	+86	+5	+0.2	-0.3	+48	+2.2	-1.4	-1.9	+1.9	+0.5
30	4W U111	+0.5		-1.4	+2.6	+24	+42	+61	+68	+6	+0.2		+38	+1.7	+2.4	+3.4	-1.1	+1.3
31	4W U160	+0.0	-0.7	-2.1	+3.3	+27	+46	+66	+70	+5	+0.1	-1.8	+42	+1.7	+0.7	+1.0	+0.3	+1.0
32	4W U126	+0.7	+0.0	-0.9	+3.1	+25	+42	+58	+64	+8	+0.8	-3.9	+35	+0.3	+0.5	+0.6	-0.5	+0.7
33	4W U142	+3.6	+0.5	-2.9	-0.3	+15	+28	+40	+52	+4	+0.0	-3.4	+30	+1.2	+2.3	+3.2	-1.2	+1.7
34	4W U163	-0.3	+0.2	-1.8	+2.5	+23	+44	+58	+64	+3	+0.2	-3.0	+39	+1.9	+0.8	+1.2	+0.1	+1.2
35	4W U168	-0.5	+0.7	-2.0	+3.0	+28	+48	+66	+76	+5	+0.0		+44	+1.5	+0.6	+0.9	+0.0	+1.4
36	4W U157	+0.3	+0.3	-1.5	+2.9	+23	+41	+54	+58	+7	+0.5	-2.4	+34	+0.5	-0.5	-0.6	+0.4	+0.2
37	4W U103	+2.3	-1.4	-1.3	+2.0	+20	+36	+51	+53	+5	+0.5		+37	+2.7	+1.2	+1.6	+0.5	+0.6
38	4W U167	+2.6	+0.6	-0.8	+2.2	+24	+40	+56	+65	+11	+0.5	-2.0	+43	+2.1	+0.9	+1.3	+0.6	+0.3
Breed Average		-0.8	+0.1	-0.9	+3.6	+25	+39	+55	+58	+4	+0.5		+35	+1.7	-0.1	-0.1	+0.9	+0.1

38 Registered 'U' Bulls for Stud & Commercial Use

Please note, any comments made about EBV's were made from the December Breedplan run.
Any differences will be because the download from the Murray Grey Society was from the January run.

LOT 1 WOODBOURN USHER U101 (PB)

Born: 08/08/2023 Colour: Silver Tattoo: 4W U101

THE GLEN BASS F104 (GR1)
AYR PARK HUGH H77 (GR2)
AYR PARK TRIAL & ERROR F92 (PB)
Sire: **AYR PARK NEVADA N31 (PB)**
WILLALOOKA YORK Y96 (PB) (AI)
AYR PARK KATRINA C50 (PB) (AI)
AYR PARK KATRINA S1+97 (PB) (AI)
ONWARD JOURNEY (PB) (AI)
ONWARD TRAVELLER (PB) (AI)
ONWARD TITIAN C34 (PB)
Dam: **ONWARD EVELYN J10 (PB)**
ONDIONG DUJON (PB)
ONWARD EVELYN 3RD (PB)
ONDIONG EVELYN 84TH (PB)

NOTES: As you can see, this pen is where we placed our young joining sires, who joined our heifers in the spring. These three bulls did a remarkable job as we had the highest pregnancy rate in our heifers that we have ever had. We thoroughly recommend these three bulls to you, as they were selected as juniors back in October and they were standouts then. This Lot 1 is a particular favourite as he is out of a bought in cow to provide an outcross. Please note his outstanding figures. We would be happy to recommend this bull for a self replacing herd.

Scan 2/01/2025. WT: 634 EMA: 92 P8: 3 RIB: 3 IMF: 3.9

January 2025 Murray Grey BREEDPLAN

EBV	BIRTH			GROWTH					FERTILITY		CARCASE						
	Calving Ease Direct	Calving Ease Daughters	Gestation Length (days)	Birth Weight (kg)	Milk (kg)	200 - Day Wt (kg)	400 - Day Wt (kg)	600 - Day Wt (kg)	Mature Cow Wt (kg)	Scrotal Size (cm)	Days to Calving	Carcase Wt (kg)	EMA (sq cm)	Rib Fat (mm)	Rump Fat (mm)	Retail Beef Yield %	Intra-Muscular Fat %
EBV	+1.2	+0.8	-0.9	+3.2	+10	+24	+46	+65	+76	+0.7		+39	+0.0	+0.6	+0.8	-0.5	+0.7
Acc	38%	29%	49%	78%	46%	70%	69%	70%	58%	44%		58%	46%	54%	54%	51%	43%

Purchaser: _____ \$ _____

LOT 2 WOODBOURN USAIN U72 (PB)

Born: 30/07/2023 Colour: Silver Tattoo: 4W U72

GLENLIAM FARM LOGISTIC L90 (PB) (ET)
ONDIONG BARTLET P8 (PB)
ONDIONG BEROLEANE 47 (PB)
Sire: **ONDIONG 2F R107 (PB)**
BAROONA PARK TUDOR (PB) (AI)
ONDIONG DEBBIE 143RD (PB)
ONDIONG DEBBIE 124TH (PB)
KELSO YOGO Y13 (PB) (AI)
KELSO CRACKER C17 (PB)
LINDSAY DONNA Z13 (GR2)
Dam: **WOODBOURN MISS SALLY L110 (PB)**
MELALEUCA ARTILLARY A16 (PB)
WOODBOURN MISS SALLY G17 (PB)
WOODBOURN SALLY A42 (PB)

NOTES: One of our yearling joining sires, this excellent bull is very long with a lovely head and great outlook. He was chosen to use over our heifers because of his style and appeal but also because of his smoothness. An excellent young bull.

Scan 2/01/2025. WT: 666 EMA: 100 P8: 4 RIB: 3 IMF: 4.8

January 2025 Murray Grey BREEDPLAN

EBV	BIRTH			GROWTH					FERTILITY		CARCASE						
	Calving Ease Direct	Calving Ease Daughters	Gestation Length (days)	Birth Weight (kg)	Milk (kg)	200 - Day Wt (kg)	400 - Day Wt (kg)	600 - Day Wt (kg)	Mature Cow Wt (kg)	Scrotal Size (cm)	Days to Calving	Carcase Wt (kg)	EMA (sq cm)	Rib Fat (mm)	Rump Fat (mm)	Retail Beef Yield %	Intra-Muscular Fat %
EBV	-1.5	+0.5	-0.7	+5.0	+4	+32	+52	+73	+79	+0.8		+47	+2.2	+0.2	+0.3	+0.8	+0.2
Acc	37%	29%	47%	77%	42%	69%	69%	69%	57%	32%		58%	46%	55%	55%	51%	43%

Purchaser: _____ \$ _____

LOT 3 WOODBOURN UMBER U136 (PB)

Born: 16/08/2023 Colour: Silver Tattoo: 4W U136

MONTEREY HARMONY H62 (PB)
AYR PARK MAJOR M55 (PB)
AYR PARK MATINA J30 (GR2)
Sire: **WOODBOURN SUTTON S44 (PB)**
AYR PARK HUGH H77 (GR2)
WOODBOURN MISS VITELLO N99 (PB)
BIG PARK VITELLO D22 (PB)
THE GLEN BASS F104 (GR1)
AYR PARK HUGH H77 (GR2)
AYR PARK TRIAL & ERROR F92 (PB)
Dam: **WOODBOURN MISS RHIAN R23 (PB)**
YAMBA HORTINESS (PB)
WOODBOURN MISS RHIAN M106 (PB)
WOODBOURN RHIAN Y3 (PB)

NOTES: Like his mates in Pen One, this young bull was used over heifers in the spring. This smooth, upstanding young bull certainly did the job for us. Like his mates, he is down in condition, but that's what we breed them for: to work. A wonderful spread of figures with exceptional milk and fats; ideal for a self replacing herd.

Scan 2/01/2025. WT: 594 EMA: 94 P8: 5 RIB: 4 IMF: 4.6

January 2025 Murray Grey BREEDPLAN

EBV	BIRTH			GROWTH					FERTILITY		CARCASE						
	Calving Ease Direct	Calving Ease Daughters	Gestation Length (days)	Birth Weight (kg)	Milk (kg)	200 - Day Wt (kg)	400 - Day Wt (kg)	600 - Day Wt (kg)	Mature Cow Wt (kg)	Scrotal Size (cm)	Days to Calving	Carcase Wt (kg)	EMA (sq cm)	Rib Fat (mm)	Rump Fat (mm)	Retail Beef Yield %	Intra-Muscular Fat %
EBV	+1.7	-1.6	-0.3	+3.3	+14	+27	+45	+60	+66	+0.2		+39	+1.4	+1.9	+2.8	-0.8	+0.9
Acc	38%	28%	49%	78%	39%	70%	70%	71%	59%	36%		60%	48%	58%	58%	54%	47%

Purchaser: _____ \$ _____



Lot 1 Woodbourn Usher U101



Lot 2 Woodbourn Usain U72



Lot 3 Woodbourn Umber U136

LOT 4 WOODBOURN UPWOOD U95 (PB)

Born: 07/08/2023

Colour: Grey

Tattoo: 4W U95

ROGIALYN JUPITER (GR1) (AI)
 ROGIALYN JUPITER N13 (GR2)
 ROGIALYN TARELLA F9 (PB) (AI) (ET)
Sire: MOUNT MAJOR QUANTUM Q1 (PB)
 MOUNT MAJOR KINGSWOOD K6 (PB) (AI)
 MOUNT MAJOR DELVENE N8 (PB) (AI)
 MOUNT MAJOR DELVENE K4 (GR2) (AI)
 MELALEUCA GRID LOCK G15 (PB)
 MELALEUCA KARL K231 (PB)
 MELALEUCA DAIYA H77 (PB)
Dam: WOODBOURN GRETEL N23 (PB)
 WILTSHIRE XTRA SPECIAL (PB) (AI)
 WOODBOURN GRETEL B3 (PB)
 WOODBOURN GRETEL Y50 (PB)

NOTES: A most appealing bull by the large framed sire, Quantum. This bull exhibits his sire's qualities, which are his length, muscle, shape and overall appeal. A very young bull that is quite exceptional. A lovely soft grey colour. Tight pizzle. His 400 and 600 day EBV's are in the top 5% for the breed as is his IMF.

Scan 2/01/2025. WT: 712 EMA: 100 P8: 9 RIB: 8 IMF: 6.5

January 2025 Murray Grey BREEDPLAN

EBV	BIRTH				GROWTH					FERTILITY		CARCASE					
	Calving Ease Direct	Calving Ease Daughters	Gestation Length (days)	Birth Weight (kg)	Milk (kg)	200 - Day Wt (kg)	400 - Day Wt (kg)	600 - Day Wt (kg)	Mature Cow Wt (kg)	Scrotal Size (cm)	Days to Calving	Carcase Wt (kg)	EMA (sq cm)	Rib Fat (mm)	Rump Fat (mm)	Retail Beef Yield %	Intra-Muscular Fat %
-3.1	-0.6	-2.2	+5.6	+5	+36	+61	+90	+96	+0.3	-1.9	+52	+1.4	-0.3	-0.4	+0.4	+1.1	
Acc	41%	30%	51%	78%	45%	71%	71%	72%	60%	48%	26%	60%	50%	58%	58%	54%	48%

Purchaser: _____ \$ _____

LOT 5 WOODBOURN UNDERSTUDY U114 (PB)

Born: 11/08/2023

Colour: Silver

Tattoo: 4W U114

ROGIALYN JUPITER (GR1) (AI)
 ROGIALYN JUPITER N13 (GR2)
 ROGIALYN TARELLA F9 (PB) (AI) (ET)
Sire: MOUNT MAJOR QUANTUM Q1 (PB)
 MOUNT MAJOR KINGSWOOD K6 (PB) (AI)
 MOUNT MAJOR DELVENE N8 (PB) (AI)
 MOUNT MAJOR DELVENE K4 (GR2) (AI)
 THE GLEN BASS F104 (GR1)
 AYR PARK HUGH H77 (GR2)
 AYR PARK TRIAL & ERROR F92 (PB)
Dam: WOODBOURN MISS BARBARA P37 (PB)
 ONWARD JEREMIAH (PB)
 WOODBOURN MISS BARBARA G34 (PB)
 WOODBOURN MISS BARBARA Z41 (PB)

NOTES: A bull with great capacity, thickness and outlook. He is very smooth. Visually his thickness and depth detract from length. A very stylish bull with great outlook and presence. Tight pizzle. He is a lovely bull. Please note his 400, 600 day and milk figures are in the top 5% with his IMF in the top 1%.

Scan 2/01/2025. WT: 720 EMA: 107 P8: 12 RIB: 8 IMF: 6.3

January 2025 Murray Grey BREEDPLAN

EBV	BIRTH				GROWTH					FERTILITY		CARCASE					
	Calving Ease Direct	Calving Ease Daughters	Gestation Length (days)	Birth Weight (kg)	Milk (kg)	200 - Day Wt (kg)	400 - Day Wt (kg)	600 - Day Wt (kg)	Mature Cow Wt (kg)	Scrotal Size (cm)	Days to Calving	Carcase Wt (kg)	EMA (sq cm)	Rib Fat (mm)	Rump Fat (mm)	Retail Beef Yield %	Intra-Muscular Fat %
-3.2	+0.2	-0.9	+5.6	+9	+35	+55	+90	+105	+0.3	-2.1	+52	+1.5	+0.8	+1.1	-0.1	+1.6	
Acc	40%	29%	50%	78%	44%	71%	71%	72%	61%	49%	26%	61%	51%	61%	61%	56%	50%

Purchaser: _____ \$ _____

LOT 6 WOODBOURN UMBRIA U141 (PB)

Born: 20/08/2023

Colour: Silver

Tattoo: 4W U141

THE GLEN BASS H018 (GR2)
 BURNETT DOWNS KENWORTH K13 (PB)
 BURNETT DOWNS WILMA E28 (PB)
Sire: ONWARD NOUGAT (PB)
 KELSO BABALON B15 (PB)
 ONWARD DEBBIE F46 (PB)
 ONWARD DEBBIE 7TH (PB)
 THE GLEN BASS F104 (GR1)
 AYR PARK HUGH H77 (GR2)
 AYR PARK TRIAL & ERROR F92 (PB)
Dam: WOODBOURN MISS BESS P10 (PB)
 WILLALOOKA UPLIFT U5 (PB)
 LINDSAY BESS B100 (PB) (AI)
 LINDSAY BESS Z29 (PB)

NOTES: Again, a lovely, long, smooth bull showing capacity and shape. A bull to suit all operations. He walks well and has a tight pizzle. This very young bull has beautifully balanced figures right across the page from his gestation length, through to his low birth, high growth and outstanding carcass data.

Scan 2/01/2025. WT: 682 EMA: 106 P8: 11 RIB: 7 IMF: 5.3

January 2025 Murray Grey BREEDPLAN

EBV	BIRTH				GROWTH					FERTILITY		CARCASE					
	Calving Ease Direct	Calving Ease Daughters	Gestation Length (days)	Birth Weight (kg)	Milk (kg)	200 - Day Wt (kg)	400 - Day Wt (kg)	600 - Day Wt (kg)	Mature Cow Wt (kg)	Scrotal Size (cm)	Days to Calving	Carcase Wt (kg)	EMA (sq cm)	Rib Fat (mm)	Rump Fat (mm)	Retail Beef Yield %	Intra-Muscular Fat %
+0.1	+1.5	-2.2	+3.7	+9	+36	+54	+77	+82	-0.5	-2.0	+52	+1.8	+0.7	+1.2	+0.4	+0.5	
Acc	42%	32%	51%	78%	47%	71%	72%	73%	62%	49%	28%	62%	52%	61%	61%	57%	50%

Purchaser: _____ \$ _____



Lot 4 Woodbourn Upwood U95 taken at 21 mths



Lot 5 Woodbourn Understudy U114 taken at 16 mths



Lot 6 Woodbourn Umbria U141 taken at 16 mths

LOT 7 WOODBOURN USHI U89 (PB)

Born: 05/08/2023

Colour: Silver

Tattoo: 4W U89

THE GLEN BASS F104 (GR1)
 AYR PARK HUGH H77 (GR2)
 AYR PARK TRIAL & ERROR F92 (PB)

Sire: **AYR PARK NEVADA N31 (PB)**

WILLALOOKA YORK Y96 (PB) (AI)
 AYR PARK KATRINA C50 (PB) (AI)
 AYR PARK KATRINA S1+97 (PB) (AI)

KELSO CRACKER C17 (PB)
 WOODBOURN F18 HORNET (PB)
 WOODBOURN MISS ROSIE C95 (PB)

Dam: **WOODBOURN GRETEL J61 (PB)**

GLENLIAM FARM XCHANGE X97 (PB)
 WOODBOURN GRETEL A56 (PB)
 WOODBOURN MISS GRETEL T55+98 (PB)

NOTES: A very correct bull with shape and lots of meat. A big powerful bull out of one of our sale cows, Woodbourn Gretel J61, Lot 45. This bull certainly appeals, especially when you look at his 400 and 600 day figures and his milk at more than double breed average. This young bull would be great to put through a replacement herd program. He is very very quiet. Tight pizzle.

Scan 2/01/2025. WT: 734 EMA: 108 P8: 6 RIB: 5 IMF: 4.9

January 2025 Murray Grey BREEDPLAN

EBV	BIRTH				GROWTH				FERTILITY		CARCASE						
	Calving Ease Direct	Calving Ease Daughters	Gestation Length (days)	Birth Weight (kg)	Milk (kg)	200 - Day Wt (kg)	400 - Day Wt (kg)	600 - Day Wt (kg)	Mature Cow Wt (kg)	Scrotal Size (cm)	Days to Calving	Carcase Wt (kg)	EMA (sq cm)	Rib Fat (mm)	Rump Fat (mm)	Retail Beef Yield %	Intra-Muscular Fat %
-1.1	+0.9	-1.6	+5.3	+9	+35	+61	+92	+99	+0.6	-2.4	+55	+1.2	-1.1	-1.4	+1.2	+0.1	
Acc	41%	32%	51%	78%	48%	71%	71%	72%	60%	43%	26%	61%	51%	59%	59%	55%	49%

Purchaser: _____ \$ _____

LOT 8 WOODBOURN UPPERHAND U65 (PB)

Born: 29/07/2023

Colour: Silver

Tattoo: 4W U65

THE GLEN BASS F104 (GR1)
 AYR PARK HUGH H77 (GR2)
 AYR PARK TRIAL & ERROR F92 (PB)

Sire: **AYR PARK NEVADA N31 (PB)**

WILLALOOKA YORK Y96 (PB) (AI)
 AYR PARK KATRINA C50 (PB) (AI)
 AYR PARK KATRINA S1+97 (PB) (AI)

MONTEREY COUGAR C72 (PB)
 MELALEUCA GHANDI G112 (PB)
 MELALEUCA MINNOW Z95 (PB)

Dam: **WOODBOURN MISS CUPID K8 (PB)**

WOODBOURN TED-E-BEAR (PB)
 WOODBOURN MISS CUPID Z86 (PB)
 WOODBOURN MISS CUPID U21+99 (PB)

NOTES: Here we have a stylish bull with shape, length and smoothness, exhibiting lots of muscle and softness. He moves well. Like a great number of bulls in the sale, this is a bull that could be used for a number of purposes, such as vealer production and in a replacement herd.

Scan 2/01/2025. WT: 754 EMA: 111 P8: 7 RIB: 6 IMF: 5.9

January 2025 Murray Grey BREEDPLAN

EBV	BIRTH				GROWTH				FERTILITY		CARCASE						
	Calving Ease Direct	Calving Ease Daughters	Gestation Length (days)	Birth Weight (kg)	Milk (kg)	200 - Day Wt (kg)	400 - Day Wt (kg)	600 - Day Wt (kg)	Mature Cow Wt (kg)	Scrotal Size (cm)	Days to Calving	Carcase Wt (kg)	EMA (sq cm)	Rib Fat (mm)	Rump Fat (mm)	Retail Beef Yield %	Intra-Muscular Fat %
-1.9	-1.8	-0.4	+6.7	+7	+37	+50	+92	+103	+1.3	-4.6	+51	+1.5	-0.7	-0.9	+1.5	+0.3	
Acc	42%	34%	52%	79%	49%	71%	71%	72%	62%	47%	29%	62%	52%	61%	61%	57%	50%

Purchaser: _____ \$ _____

LOT 9 WOODBOURN ULMUK U148 (PB)

Born: 24/08/2023

Colour: Grey

Tattoo: 4W U148

BURNETT DOWNS KENWORTH K13 (PB)
 ONWARD NOUGAT (PB)
 ONWARD DEBBIE F46 (PB)

Sire: **WOODBOURN SONIC S16 (PB)**

KELSO CRACKER C17 (PB)
 WOODBOURN BARBARA M141 (PB)
 WOODBOURN BARBARA A49 (PB)

GLENLIAM FARM JUGERNAUT J104 (PB)
 CARLINGA NAPOLEON (PB)
 CARLINGA LADY LINDA J43 (GR2)

Dam: **WOODBOURN MISS RHIAN R73 (PB)**

AYR PARK HUGH H77 (GR2)
 WOODBOURN MISS RHIAN N109 (PB)
 WOODBOURN RHIAN Y3 (PB)

NOTES: By the very good home grown bull, Woodbourn Sonic S16. This is a bull exhibiting shape and muscle. Again, a long smooth bull, showing depth and capacity. Please note his younger age. A dark grey bull that would be excellent for heifer joining, with his great calving ease, gestation length and birth EBV's and also to gain growth and milk in a replacement herd.

Scan 2/01/2025. WT: 668 EMA: 105 P8: 9 RIB: 6 IMF: 5.3

January 2025 Murray Grey BREEDPLAN

EBV	BIRTH				GROWTH				FERTILITY		CARCASE					
	Calving Ease Direct	Calving Ease Daughters	Gestation Length (days)	Birth Weight (kg)	Milk (kg)	200 - Day Wt (kg)	400 - Day Wt (kg)	600 - Day Wt (kg)	Mature Cow Wt (kg)	Scrotal Size (cm)	Days to Calving	Carcase Wt (kg)	EMA (sq cm)	Rib Fat (mm)	Rump Fat (mm)	Retail Beef Yield %
+2.2	+0.1	-2.1	+3.1	+10	+31	+55	+81	+86	+0.0	+3.1	+56	+2.4	-0.4	-0.5	+1.4	+0.3
Acc	35%	25%	47%	78%	37%	69%	69%	70%	58%	35%	59%	48%	58%	58%	53%	46%

Purchaser: _____ \$ _____



Lot 7 Woodbourn Ushi U89 taken at 16 mths



Lot 8 Woodbourn Upperhand U65 taken at 17 mths



Lot 9 Woodbourn Ulmuk U148 taken at 16 mths

LOT 10 WOODBOURN ULRICH U108 (PB)

Born: 09/08/2023

Colour: Silver

Tattoo: 4W U108

THE GLEN BASS H018 (GR2)
BURNETT DOWNS KENWORTH K13 (PB)
BURNETT DOWNS WILMA E28 (PB)

Sire: ONWARD NOUGAT (PB)

KELSO BABALON B15 (PB)
ONWARD DEBBIE F46 (PB)
ONWARD DEBBIE 7TH (PB)

YAMBA HORTINESS (PB)
WOODBOURN LIQUID SILVER L2 (PB)
WOODBOURN MISS HEATHER A12 (PB)

Dam: WOODBOURN MISS MAROA N40 (PB)

NAWARRA BANANA BENDER (PB)
WOODBOURN MAROA L18 (PB)
WOODBOURN MISS Y MAROA C50 (PB)

NOTES: So similar to a lot of bulls catalogued, this bull exhibits softness, muscle and shape. Tight pizzle. His very high fat figures (in the top 5% for the breed) are shown in his visual appearance, with his softness and doability. Another of those bulls, ideally suited for a replacement herd.

Scan 2/01/2025. WT: 666 EMA: 97 P8: 11 RIB: 8 IMF: 5.8

January 2025 Murray Grey BREEDPLAN

EBV	BIRTH			GROWTH					FERTILITY		CARCASE						
	Calving Ease Direct	Calving Ease Daughters	Gestation Length (days)	Birth Weight (kg)	Milk (kg)	200 - Day Wt (kg)	400 - Day Wt (kg)	600 - Day Wt (kg)	Mature Cow Wt (kg)	Scrotal Size (cm)	Days to Calving	Carcase Wt (kg)	EMA (sq cm)	Rib Fat (mm)	Rump Fat (mm)	Retail Beef Yield %	Intra-Muscular Fat %
-3.7	+1.0	-1.2	+5.2	+6	+35	+53	+71	+74	+0.1		+45	+1.3	+0.8	+1.3	+0.2	+0.4	
Acc	38%	27%	49%	78%	46%	71%	71%	72%	60%	42%		61%	50%	60%	60%	55%	49%

Purchaser: _____ \$ _____

LOT 11 WOODBOURN UNCLE U124 (PB)

Born: 13/08/2023

Colour: Silver

Tattoo: 4W U124

GLENLIAM FARM LOGISTIC L90 (PB) (ET)
ONDIONG BARTLET P8 (PB)
ONDIONG BEROLEANE 47 (PB)

Sire: ONDIONG 2F R107 (PB)

BAROONA PARK TUDOR (PB) (AI)
ONDIONG DEBBIE 143RD (PB)
ONDIONG DEBBIE 124TH (PB)

JYNDARRA WARRIOR W3 (PB) (AI)
WOODBOURN WARRIOR B48 (PB)
WOODBOURN JEANETTE V22 (PB)

Dam: WOODBOURN MISS JEANETTE E5 (PB)

MONTEREY TALENT SCOUT+98 (PB)
WOODBOURN MISS JEANETTE X10 (PB)
WOODBOURN MISS JEANETTE S36+97 (PB)

NOTES: Big, upstanding bull showing a lot of strength. This bull has flair, length, muscle and shape. Would suit someone wanting to put some power into their herd.

Scan 2/01/2025. WT: 642 EMA: 100 P8: 8 RIB: 5 IMF: 5.4

January 2025 Murray Grey BREEDPLAN

EBV	BIRTH			GROWTH					FERTILITY		CARCASE						
	Calving Ease Direct	Calving Ease Daughters	Gestation Length (days)	Birth Weight (kg)	Milk (kg)	200 - Day Wt (kg)	400 - Day Wt (kg)	600 - Day Wt (kg)	Mature Cow Wt (kg)	Scrotal Size (cm)	Days to Calving	Carcase Wt (kg)	EMA (sq cm)	Rib Fat (mm)	Rump Fat (mm)	Retail Beef Yield %	Intra-Muscular Fat %
-2.0	-0.8	-0.2	+4.4	+6	+24	+40	+62	+73	+1.1		+39	+1.4	-0.8	-1.2	+1.5	+0.0	
Acc	37%	29%	43%	66%	45%	67%	69%	70%	59%	35%		60%	48%	57%	57%	53%	46%

Purchaser: _____ \$ _____

LOT 12 WOODBOURN UNDERWOOD U2 (PB)

Born: 19/02/2023

Colour: Grey

Tattoo: 4W U2

THE GLEN BASS H018 (GR2)
BURNETT DOWNS KENWORTH K13 (PB)
BURNETT DOWNS WILMA E28 (PB)

Sire: ONWARD NOUGAT (PB)

KELSO BABALON B15 (PB)
ONWARD DEBBIE F46 (PB)
ONWARD DEBBIE 7TH (PB)

MELALEUCA ECUADOR E267 (PB)
MELALEUCA JACKHAMMER J115 (PB)
MELALEUCA ESMERELDA E58 (PB)

Dam: WOODBOURN BON M21 (PB)

ULTIMATE EARL GREY (PB) (AI)
BYRONFIELD C2 (PB)
WOODBOURN MISS BARBARA W37 (PB)

NOTES: A magnificent long, smooth, soft fleshed bull, who has an easy doing appearance. He combines great shape with style and flair; a total package. Note his weight and his huge raw data scan. If we attended a bull sale, this bull would be the one we would zoom in on. Tight pizzle.

Scan 2/01/2025. WT: 846 EMA: 121 P8: 9 RIB: 6 IMF: 5.3

January 2025 Murray Grey BREEDPLAN

EBV	BIRTH			GROWTH					FERTILITY		CARCASE						
	Calving Ease Direct	Calving Ease Daughters	Gestation Length (days)	Birth Weight (kg)	Milk (kg)	200 - Day Wt (kg)	400 - Day Wt (kg)	600 - Day Wt (kg)	Mature Cow Wt (kg)	Scrotal Size (cm)	Days to Calving	Carcase Wt (kg)	EMA (sq cm)	Rib Fat (mm)	Rump Fat (mm)	Retail Beef Yield %	Intra-Muscular Fat %
+0.2	+0.1	-2.9	+3.5	+7	+33	+54	+78	+78	+0.3	-0.7	+57	+3.1	-1.6	-2.1	+3.0	-0.6	
Acc	39%	28%	49%	78%	45%	69%	71%	73%	61%	44%	25%	61%	49%	60%	60%	55%	49%

Purchaser: _____ \$ _____



Lot 10 Woodbourn Ulrich U108 taken at 16 mths



Lot 11 Woodbourn Uncle U124 taken at 16 mths



Lot 12 Woodbourn Underwood U2 taken at 21 mths

LOT 13 WOODBOURN UPTREND U8 (PB)

Born: 23/02/2023 Colour: Silver Tattoo: 4W U8

RENNYLEA L743 (AA)
THE GLEN INTENSITY P250 (GR1)
THE GLEN CLARA L201
Sire: MOUNT MAJOR ROGER R29 (GR2)
THE GLEN NEW DESIGN X388 (GR1) (AI)
ROGIALYN TARELLA F9 (PB) (AI) (ET)
ROGIALYN TARELLA W1 (PB)

WOODBOURN TED-E-BEAR (PB)
WOODBOURN REALLY WICKED D75 (PB)
WOODBOURN SERENITY W51 (PB)

Dam: WOODBOURN MISS EVITA G60 (PB)
MELALEUCA ARTILLARY A16 (PB)
WOODBOURN EVITA E17 (PB)
BIG PARK EVITA Z66 (PB)

NOTES: A big upstanding, powerful bull, out of one of our great old cows, Woodbourn Miss Evita G60, He exhibits heaps of muscle and power, with shape, length and smoothness. His sire, Roger, was joined to a small number of females in 2022, and we were so impressed with the progeny, we have used him over a large number this year. His 400 and 600day, his EMA and his IMF are in the top 5% for the breed.

Scan 2/01/2025. WT: 802 EMA: 118 P8: 6 RIB: 6 IMF: 5.9

January 2025 Murray Grey BREEDPLAN

EBV	BIRTH				GROWTH				FERTILITY		CARCASE						
	Calving Ease Direct	Calving Ease Daughters	Gestation Length (days)	Birth Weight (kg)	Milk (kg)	200 - Day Wt (kg)	400 - Day Wt (kg)	600 - Day Wt (kg)	Mature Cow Wt (kg)	Scrotal Size (cm)	Days to Calving	Carcase Wt (kg)	EMA (sq cm)	Rib Fat (mm)	Rump Fat (mm)	Retail Beef Yield %	Intra-Muscular Fat %
-3.2			-0.9	+5.1	+4	+32	+62	+86	+85	+0.4		+55	+3.7	-1.0	-1.2	+2.1	+0.8
Acc	33%		44%	76%	41%	66%	66%	66%	55%	27%		54%	37%	47%	47%	44%	40%

Purchaser: _____ \$ _____

LOT 14 WOODBOURN UNIVERSE U28 (PB)

Born: 06/03/2023 Colour: Silver Tattoo: 4W U28

THE GLEN BASS H018 (GR2)
BURNETT DOWNS KENWORTH K13 (PB)
BURNETT DOWNS WILMA E28 (PB)

Sire: ONWARD NOUGAT (PB)
KELSO BABALON B15 (PB)
ONWARD DEBBIE F46 (PB)
ONWARD DEBBIE 7TH (PB)

MONTEREY COUGAR C72 (PB)
MELALEUCA GHANDI G112 (PB)
MELALEUCA MINNOW Z95 (PB)

Dam: WOODBOURN MISS HEATHER K26 (PB)
GLENCAIRN TOP GUN W77 (PB)
WOODBOURN MISS HEATHER A12 (PB)
WOODBOURN MISS HEATHER X12 (PB)

NOTES: A lovely dark silver bull with great shape and smoothness from one end to the other. Suitable for all markets. Please note his exceptional carcass data, especially fats. Add this to his high 600 day figure and high milk, he is a bull for all herds.

Scan 2/01/2025. WT: 760 EMA:110 P8: 13 RIB:9 IMF:5.9

January 2025 Murray Grey BREEDPLAN

EBV	BIRTH				GROWTH				FERTILITY		CARCASE						
	Calving Ease Direct	Calving Ease Daughters	Gestation Length (days)	Birth Weight (kg)	Milk (kg)	200 - Day Wt (kg)	400 - Day Wt (kg)	600 - Day Wt (kg)	Mature Cow Wt (kg)	Scrotal Size (cm)	Days to Calving	Carcase Wt (kg)	EMA (sq cm)	Rib Fat (mm)	Rump Fat (mm)	Retail Beef Yield %	Intra-Muscular Fat %
-2.8	+0.3		-1.3	+4.5	+8	+33	+45	+66	+68	+0.3	-4.0	+41	+1.2	+1.6	+2.4	-0.1	+0.5
Acc	42%	32%	51%	79%	49%	70%	72%	73%	62%	47%	29%	63%	52%	61%	61%	57%	51%

Purchaser: _____ \$ _____

LOT 15 WOODBOURN UPSTANDING U31 (PB)

Born: 07/03/2023 Colour: Grey Tattoo: 4W U31

MELALEUCA DEVIL D23 (PB)
MELALEUCA GRID LOCK G15 (PB)
MELALEUCA ESBAY D195 (PB)

Sire: MELALEUCA KARL K231 (PB)
MELALEUCA EWEN E55 (PB)
MELALEUCA DAIYA H77 (PB)
MELALEUCA DAIYA C167 (PB)

KELSO CRACKER C17 (PB)
WOODBOURN F18 HORNET (PB)
WOODBOURN MISS ROSIE C95 (PB)

Dam: WOODBOURN BARBARA H64 (PB)
GLENLIAM FARM XCHANGE X97 (PB)
WOODBOURN BARBARA A49 (PB)
WOODBOURN MISS BARBARA T85+98 (PB)

NOTES: What a beautiful bull this is! With length and smoothness and an easy free moving style. An appealing light grey colour, this bull would be an advantage to any herd. Again, the sort of bull we are looking for, when we are in the market for a new bull. Please note his ideal calving ease and gestation length figures and his 600 day growth figure is well above average with a great set of carcass figures.

Scan 2/01/2025. WT: 778 EMA: 107 P8: 11 RIB:9 IMF: 6.4

January 2025 Murray Grey BREEDPLAN

EBV	BIRTH				GROWTH				FERTILITY		CARCASE						
	Calving Ease Direct	Calving Ease Daughters	Gestation Length (days)	Birth Weight (kg)	Milk (kg)	200 - Day Wt (kg)	400 - Day Wt (kg)	600 - Day Wt (kg)	Mature Cow Wt (kg)	Scrotal Size (cm)	Days to Calving	Carcase Wt (kg)	EMA (sq cm)	Rib Fat (mm)	Rump Fat (mm)	Retail Beef Yield %	Intra-Muscular Fat %
+2.1	-0.8		-2.5	+3.0	+8	+30	+57	+73	+67	+0.6	-2.8	+48	+1.4	+0.2	+0.3	+0.2	+0.5
Acc	48%	40%	58%	79%	58%	71%	72%	73%	64%	50%	31%	64%	54%	63%	63%	59%	54%

Purchaser: _____ \$ _____



Lot 13 Woodbourn Uptrend U8 taken at 22 mths



Lot 14 Woodbourn Universe U28 taken at 21 mths



Lot 15 Woodbourn Upstanding U31 taken at 21 mths

LOT 16 WOODBOURN UMFOLOZI U18 (PB)

Born: 02/03/2023

Colour: Grey

Tattoo: 4W U18

RENNYLEA L743 (AA)
THE GLEN INTENSITY P250 (GR1)
THE GLEN CLARA L201

Sire: MOUNT MAJOR ROGER R29 (GR2)

THE GLEN NEW DESIGN X388 (GR1) (AI)
ROGIALYN TARELLA F9 (PB) (AI) (ET)
ROGIALYN TARELLA W1 (PB)

ORCADIA PARK CENTURY (PB)
WARROOK HASSETT Q10+95 (PB) (AI)
WARROOK BETTY L31 (PB)

Dam: WOODBOURN MISS GRETEL Z34 (PB)

MONTEREY TALENT SCOUT+98 (PB)
WOODBOURN MISS GRETEL W108 (PB)
WOODBOURN MISS GRETEL Q98 (PB)

NOTES: This year's meat machine. This bull is choc a block full of meat from one end to the other. For those wanting to put weight into their cattle, this is the bull to do it. Slightly higher in birth but huge growth in the top 1% of the breed for 600day. He visually displays shape and muscle and his carcass EBV's are outstanding. Please note his scan of 122 for his EMA.

Scan 2/01/2025. WT: 814 EMA: 122 P8: 10 RIB: 7 IMF:5.7

January 2025 Murray Grey BREEDPLAN

EBV	BIRTH				GROWTH					FERTILITY		CARCASE					
	Calving Ease Direct	Calving Ease Daughters	Gestation Length (days)	Birth Weight (kg)	Milk (kg)	200 - Day Wt (kg)	400 - Day Wt (kg)	600 - Day Wt (kg)	Mature Cow Wt (kg)	Scrotal Size (cm)	Days to Calving	Carcass Wt (kg)	EMA (sq cm)	Rib Fat (mm)	Rump Fat (mm)	Retail Beef Yield %	Intra-Muscular Fat %
	-4.8	-3.3	-0.4	+6.3	+9	+35	+62	+92	+97	+0.5	-1.6	+56	+3.5	-0.6	-0.7	+2.1	+0.6
Acc	39%	31%	48%	77%	45%	67%	69%	71%	59%	35%	27%	60%	48%	57%	57%	53%	46%

Purchaser: _____ \$ _____

LOT 17 WOODBOURN COM U29 (CM)

Born: 06/03/2023

Colour: Silver

Tattoo: 4W U29

RENNYLEA L743 (AA)
THE GLEN INTENSITY P250 (GR1)
THE GLEN CLARA L201

Sire: MOUNT MAJOR ROGER R29 (GR2)

THE GLEN NEW DESIGN X388 (GR1) (AI)
ROGIALYN TARELLA F9 (PB) (AI) (ET)
ROGIALYN TARELLA W1 (PB)

Dam: WOODBOURN COMMERCIAL D (CM)

COMMERCIAL BULL

NOTES: Please note this is a commercial bull. An all round super bull. A bull showing great strength, length, shape and overall muscle. Note his ideal carcass EBV's. He is a commercial bull and therefore not for stud use, but would produce fantastic commercial calves. Highly recommended.

Scan 2/01/2025. WT: 798 EMA:110 P8:7 RIB:7 IMF: 6.5

January 2025 Murray Grey BREEDPLAN

EBV	BIRTH				GROWTH					FERTILITY		CARCASE					
	Calving Ease Direct	Calving Ease Daughters	Gestation Length (days)	Birth Weight (kg)	Milk (kg)	200 - Day Wt (kg)	400 - Day Wt (kg)	600 - Day Wt (kg)	Mature Cow Wt (kg)	Scrotal Size (cm)	Days to Calving	Carcass Wt (kg)	EMA (sq cm)	Rib Fat (mm)	Rump Fat (mm)	Retail Beef Yield %	Intra-Muscular Fat %
			-1.6	+2.6	+7	+22	+46	+63	+51			+36	+1.8	-1.0	-1.0	+1.2	+1.3
Acc			37%	73%	26%	60%	63%	65%	51%			51%	41%	49%	49%	45%	36%

Purchaser: _____ \$ _____

LOT 18 WOODBOURN URSO U49 (PB)

Born: 27/03/2023

Colour: Silver

Tattoo: 4W U49

MELALEUCA DEVIL D23 (PB)
MELALEUCA GRID LOCK G15 (PB)
MELALEUCA ESBAY D195 (PB)

Sire: MELALEUCA KARL K231 (PB)

MELALEUCA EWEN E55 (PB)
MELALEUCA DAIYA H77 (PB)
MELALEUCA DAIYA C167 (PB)

THE GLEN BASS F104 (GR1)
AYR PARK HUGH H77 (GR2)
AYR PARK TRIAL & ERROR F92 (PB)

Dam: WOODBOURN MISS RHIAN N109 (PB)

MONTEREY TALENT SCOUT+98 (PB)
WOODBOURN RHIAN Y3 (PB)
SPRINGFIELD PARK RHIAN+96 (PB)

NOTES: A bull with great shape and strength. Plenty of muscle in this free moving, strong bull. By the great Melaleuca Karl, who has been such a success at Woodbourn. This bull would suit all situations in a herd. He is probably, physically too big for joining heifers, but for those who join at two years, he would be ideal. For replacement herds, this bull with his milk at +11 and his IMF at +0.7, would be an excellent choice.

Scan 2/01/2025. WT: 734 EMA: 106 P8: 13 RIB: 9 IMF: 6

January 2025 Murray Grey BREEDPLAN

EBV	BIRTH				GROWTH					FERTILITY		CARCASE					
	Calving Ease Direct	Calving Ease Daughters	Gestation Length (days)	Birth Weight (kg)	Milk (kg)	200 - Day Wt (kg)	400 - Day Wt (kg)	600 - Day Wt (kg)	Mature Cow Wt (kg)	Scrotal Size (cm)	Days to Calving	Carcass Wt (kg)	EMA (sq cm)	Rib Fat (mm)	Rump Fat (mm)	Retail Beef Yield %	Intra-Muscular Fat %
	+0.0	-4.1	-0.7	+4.5	+10	+27	+47	+60	+55	+0.5	-3.5	+36	+0.5	+1.2	+1.7	-0.6	+0.9
Acc	49%	41%	58%	79%	57%	71%	72%	73%	64%	53%	32%	64%	55%	63%	63%	60%	55%

Purchaser: _____ \$ _____



Lot 16 Woodbourn Umfolozi U18 taken at 21 mths



Lot 17 Woodbourn Com U29 taken at 21 mths



Lot 18 Woodbourn Urso U49 taken at 21 mths

LOT 19 WOODBOURN USMAN U66 (PB)

Born: 29/07/2023

Colour: Grey

Tattoo: 4W U66

ROGIALYN JUPITER (GR1) (AI)
 ROGIALYN JUPITER N13 (GR2)
 ROGIALYN TARELLA F9 (PB) (AI) (ET)
Sire: MOUNT MAJOR QUANTUM Q1 (PB)
 MOUNT MAJOR KINGSWOOD K6 (PB) (AI)
 MOUNT MAJOR DELVENE N8 (PB) (AI)
 MOUNT MAJOR DELVENE K4 (GR2) (AI)
 WOODBOURN CHANOOKA D84 (PB)
 YAMBA HORTINESS (PB)
 YAMBA SUSAN E62 (PB) (AI)
Dam: WOODBOURN MISS EVITA L6 (PB)
 WOODBOURN F18 HORNET (PB)
 WOODBOURN EVITA H99 (PB)
 BIG PARK EVITA Z66 (PB)

NOTES: A beautiful soft grey bull. Very very smooth and showing great length and shape. A lovely bull and like all the Woodbourn bulls on offer, he has well laid in shoulders and very good bone. Tight pizzle. By the very large sire, Quantum, this bull has outstanding figures, with moderate birth, very high growth and very good carcass. His raw data EMA is very high for a spring born calf.

Scan 2/01/2025. WT: 726 EMA:113 P8: 10 RIB: 8 IMF: 6.6

January 2025 Murray Grey BREEDPLAN

EBV	BIRTH				GROWTH					FERTILITY		CARCASS					
	Calving Ease Direct	Calving Ease Daughters	Gestation Length (days)	Birth Weight (kg)	Milk (kg)	200 - Day Wt (kg)	400 - Day Wt (kg)	600 - Day Wt (kg)	Mature Cow Wt (kg)	Scrotal Size (cm)	Days to Calving	Carcass Wt (kg)	EMA (sq cm)	Rib Fat (mm)	Rump Fat (mm)	Retail Beef Yield %	Intra-Muscular Fat %
EBV	-2.9	+1.2	-1.6	+5.0	+4	+33	+67	+90	+99	+0.6	-1.8	+57	+2.5	+0.3	+0.5	+0.2	+1.2
Acc	39%	27%	49%	78%	43%	71%	71%	72%	60%	45%	25%	61%	50%	60%	60%	56%	49%

Purchaser: _____ \$ _____

LOT 20 WOODBOURN UPTON U94 (PB)

Born: 07/08/2023

Colour: Silver

Tattoo: 4W U94

THE GLEN BASS H018 (GR2)
 BURNETT DOWNS KENWORTH K13 (PB)
 BURNETT DOWNS WILMA E28 (PB)
Sire: ONWARD NOUGAT (PB)
 KELSO BABALON B15 (PB)
 ONWARD DEBBIE F46 (PB)
 ONWARD DEBBIE 7TH (PB)
 THE GLEN BASS F104 (GR1)
 AYR PARK HUGH H77 (GR2)
 AYR PARK TRIAL & ERROR F92 (PB)
Dam: WOODBOURN MISS BONN N45 (PB)
 BYRONFIELD E1 (PB)
 WOODBOURN MISS BONN G8 (PB)
 BYRONFIELD D4 (PB) (AI) (ET)

NOTES: A soft young bull with a very low birth weight, length and smoothness; making him an ideal heifer joining bull. He has a strong appealing head with great outlook.

Scan 2/01/2025. WT: 680 EMA: 98 P8: 8 RIB: 6 IMF: 6.2

January 2025 Murray Grey BREEDPLAN

EBV	BIRTH				GROWTH					FERTILITY		CARCASS					
	Calving Ease Direct	Calving Ease Daughters	Gestation Length (days)	Birth Weight (kg)	Milk (kg)	200 - Day Wt (kg)	400 - Day Wt (kg)	600 - Day Wt (kg)	Mature Cow Wt (kg)	Scrotal Size (cm)	Days to Calving	Carcass Wt (kg)	EMA (sq cm)	Rib Fat (mm)	Rump Fat (mm)	Retail Beef Yield %	Intra-Muscular Fat %
EBV	+1.6	+0.9	-2.2	+2.1	+12	+30	+41	+63	+62	-0.5	-1.0	+44	+0.8	-0.8	-1.0	+1.1	+0.3
Acc	41%	31%	51%	79%	47%	72%	72%	73%	62%	46%	26%	62%	51%	61%	61%	57%	51%

Purchaser: _____ \$ _____

LOT 21 WOODBOURN URBAN U79 (PB)

Born: 31/07/2023

Colour: Silver

Tattoo: 4W U79

MELALEUCA GRID LOCK G15 (PB)
 MELALEUCA KARL K231 (PB)
 MELALEUCA DAIYA H77 (PB)
Sire: WOODBOURN SEATTLE S40 (PB)
 ONWARD SAM (PB)
 BIG PARK BARBARA H9 (PB)
 WOODBOURN MISS Y BARBARA C106 (PB)
 GLENLIAM FARM JUGERNAUT J104 (PB)
 CARLINGA NAPOLEON (PB)
 CARLINGA LADY LINDA J43 (GR2)
Dam: WOODBOURN MANDI S67 (PB)
 MELALEUCA KARL K231 (PB)
 WOODBOURN MISS MANDI N39 (PB)
 SPRINGTON MANDI (PB)

NOTES: Again, a long, smooth bull and like the majority of the bulls in the sale, he has a tight pizzle. Out of one of our heifers by the heifer joining sire, Woodbourn Seattle S40, this bull has great figures. His calving ease and gestation length are ideal, he has a very low birth weight and excellent carcass, with rib and rump fats in the top 5%. He would certainly be a candidate for joining heifers.

Scan 2/01/2025. WT: 680 EMA: 104 P8: 11 RIB: 9 IMF: 6.4

January 2025 Murray Grey BREEDPLAN

EBV	BIRTH				GROWTH					FERTILITY		CARCASS					
	Calving Ease Direct	Calving Ease Daughters	Gestation Length (days)	Birth Weight (kg)	Milk (kg)	200 - Day Wt (kg)	400 - Day Wt (kg)	600 - Day Wt (kg)	Mature Cow Wt (kg)	Scrotal Size (cm)	Days to Calving	Carcass Wt (kg)	EMA (sq cm)	Rib Fat (mm)	Rump Fat (mm)	Retail Beef Yield %	Intra-Muscular Fat %
EBV	+3.2	-1.5	-1.8	+2.4	+4	+23	+44	+63	+64	+0.6	+2.4	+40	+2.0	+1.0	+1.3	+0.0	+0.6
Acc	36%	28%	48%	77%	41%	69%	69%	71%	59%	37%		59%	48%	58%	58%	53%	46%

Purchaser: _____ \$ _____



Lot 19 Woodbourn Usman U66 taken at 17 mths



Lot 20 Woodbourn Upton U94 taken at 16 mths



Lot 21 Woodbourn Urban U79 taken at 17 mths

LOT 22 WOODBOURN URI U159 (PB)

Born: 29/08/2023

Colour: Grey

Tattoo: 4W U159

THE GLEN BASS H018 (GR2)
BURNETT DOWNS KENWORTH K13 (PB)
BURNETT DOWNS WILMA E28 (PB)

Sire: ONWARD NOUGAT (PB)

KELSO BABALON B15 (PB)
ONWARD DEBBIE F46 (PB)
ONWARD DEBBIE 7TH (PB)

GNOLEDA ZAC (PB)
NAWARRA BANANA BENDER (PB)
SPRINGWELL BANANA T43 (PB)

Dam: WOODBOURN CARRIE L112 (PB)

MELALEUCA ARTILLARY A16 (PB)
WOODBOURN MISS CARRIE G133 (PB)
WOODBOURN MISS CARRIE Z85 (PB)

NOTES: A moderate framed bull with tremendous shape and muscle. Certainly one of the meatiest bulls in the catalogue. Those needing to put muscle into their cattle should look here. Please note his exceptional scanned EMA figure at the very young age of sixteen months.

Scan 2/01/2025. WT: 660 EMA: 103 P8:10 RIB: 6 IMF:4.9

January 2025 Murray Grey BREEDPLAN

EBV	BIRTH				GROWTH				FERTILITY		CARCASE						
	Calving Ease Direct	Calving Ease Daughters	Gestation Length (days)	Birth Weight (kg)	Milk (kg)	200 - Day Wt (kg)	400 - Day Wt (kg)	600 - Day Wt (kg)	Mature Cow Wt (kg)	Scrotal Size (cm)	Days to Calving	Carcase Wt (kg)	EMA (sq cm)	Rib Fat (mm)	Rump Fat (mm)	Retail Beef Yield %	Intra-Muscular Fat %
EBV	-4.1	+0.6	-1.6	+5.1	+3	+37	+54	+73	+78	-0.3	-1.2	+51	+2.0	-0.4	-0.5	+1.7	-0.2
Acc	40%	30%	50%	78%	48%	71%	72%	72%	61%	44%	27%	62%	51%	60%	60%	56%	50%

Purchaser: _____ \$ _____

LOT 23 WOODBOURN UDI U170 (PB)

Born: 04/09/2023

Colour: Silver

Tattoo: 4W U170

THE GLEN BASS F104 (GR1)
AYR PARK HUGH H77 (GR2)
AYR PARK TRIAL & ERROR F92 (PB)

Sire: AYR PARK NEVADA N31 (PB)

WILLALOOKA YORK Y96 (PB) (AI)
AYR PARK KATRINA C50 (PB) (AI)
AYR PARK KATRINA S1+97 (PB) (AI)

GNOLEDA ZAC (PB)
NAWARRA BANANA BENDER (PB)
SPRINGWELL BANANA T43 (PB)

Dam: WOODBOURN MISS HEATHER H3 (PB)

GLENCAIRN TOP GUN W77 (PB)
WOODBOURN MISS HEATHER A12 (PB)
WOODBOURN MISS HEATHER X12 (PB)

NOTES: A classy bull with a very good head and outlook. The youngest bull in the catalogue, but you would not think that on his size compared to the other bulls. Very very good figures across the board, not only his carcass, but also his growth. Milk, rib, rump and IMF EBV's are in the top 5% for the breed. For those looking to put softness and doability in to their herd, this is the bull to look at.

Scan 2/01/2025. WT: 700 EMA: 110 P8: 12 RIB: 8 IMF: 5.6

January 2025 Murray Grey BREEDPLAN

EBV	BIRTH				GROWTH				FERTILITY		CARCASE						
	Calving Ease Direct	Calving Ease Daughters	Gestation Length (days)	Birth Weight (kg)	Milk (kg)	200 - Day Wt (kg)	400 - Day Wt (kg)	600 - Day Wt (kg)	Mature Cow Wt (kg)	Scrotal Size (cm)	Days to Calving	Carcase Wt (kg)	EMA (sq cm)	Rib Fat (mm)	Rump Fat (mm)	Retail Beef Yield %	Intra-Muscular Fat %
EBV	-2.5	-0.3	-1.6	+5.3	+8	+35	+57	+85	+96	+1.0	-5.0	+50	+1.8	+1.4	+1.9	-0.3	+1.0
Acc	41%	32%	51%	78%	48%	71%	71%	72%	61%	44%	27%	62%	51%	60%	60%	56%	49%

Purchaser: _____ \$ _____

LOT 24 WOODBOURN ULTIMATE U71 (PB)

Born: 30/07/2023

Colour: Silver

Tattoo: 4W U71

MELALEUCA DEVIL D23 (PB)
MELALEUCA GRID LOCK G15 (PB)
MELALEUCA ESBAY D195 (PB)

Sire: MELALEUCA KARL K231 (PB)

MELALEUCA EWEN E55 (PB)
MELALEUCA DAIYA H77 (PB)
MELALEUCA DAIYA C167 (PB)

MELALEUCA ECUADOR E267 (PB)
MELALEUCA JACKHAMMER J115 (PB)
MELALEUCA ESMERELDA E58 (PB)

Dam: WOODBOURN MISS CARRIE M9 (PB)

THE GLEN HONESTY W67 (PB)
WOODBOURN MISS CARRIE Z85 (PB)
WOODBOURN CARRIE X2 (PB)

NOTES: A lovely soft silver bull with great outlook. Well balanced figures from calving ease and gestation length, through to his carcass. Tight pizzelle. He has what we are looking for, which is shape in our cattle.

Scan 2/01/2025. WT: 710 EMA: 108 P8: 8 RIB: 6 IMF: 5.6

January 2025 Murray Grey BREEDPLAN

EBV	BIRTH				GROWTH				FERTILITY		CARCASE						
	Calving Ease Direct	Calving Ease Daughters	Gestation Length (days)	Birth Weight (kg)	Milk (kg)	200 - Day Wt (kg)	400 - Day Wt (kg)	600 - Day Wt (kg)	Mature Cow Wt (kg)	Scrotal Size (cm)	Days to Calving	Carcase Wt (kg)	EMA (sq cm)	Rib Fat (mm)	Rump Fat (mm)	Retail Beef Yield %	Intra-Muscular Fat %
EBV	+0.9	-3.3	-2.1	+4.4	+7	+29	+44	+69	+65	+0.6	-3.0	+41	+2.1	-0.4	-0.5	+1.5	+0.0
Acc	48%	39%	58%	79%	58%	73%	73%	74%	65%	52%	32%	65%	55%	64%	64%	60%	55%

Purchaser: _____ \$ _____



Lot 22 Woodbourn Uri U159 taken at 16 months



Lot 23 Woodbourn Udi U170 taken at 15 mths



Lot 24 Woodbourn Ultimate U71 taken at 17 mths

LOT 25 WOODBOURN URELIO (PB)

Born: 15/07/2023 **Colour:** Grey **Tattoo:** 4W U56

MELALEUCA DEVIL D23 (PB)
 MELALEUCA GRID LOCK G15 (PB)
 MELALEUCA ESBAY D195 (PB)
Sire: MELALEUCA KARL K231 (PB)
 MELALEUCA EWEN E55 (PB)
 MELALEUCA DAIYA H77 (PB)
 MELALEUCA DAIYA C167 (PB)
 YAMBA HORTINESS (PB)
 WOODBOURN LUTHER L40 (PB)
 WOODBOURN SALLY A42 (PB)
Dam: WOODBOURN HEATHER P007 (PB)
 MELALEUCA JACKHAMMER J115 (PB)
 WOODBOURN MISS HEATHER M31 (PB)
 WOODBOURN MISS HEATHER H3 (PB)

NOTES: Here we have a bull with calving ease, gestation length and birth weight ideal for heifer joining. His carcass data is very good and his rib and rump fats are in the top 5% of the breed. His length and smoothness add to his appeal as a heifer joining bull.

Scan 2/01/2025. WT: 666 EMA: 112 P8:9 RIB: 7 IMF:5.2

January 2025 Murray Grey BREEDPLAN

	BIRTH				GROWTH					FERTILITY		CARCASS					
	Calving Ease Direct	Calving Ease Daughters	Gestation Length (days)	Birth Weight (kg)	Milk (kg)	200 - Day Wt (kg)	400 - Day Wt (kg)	600 - Day Wt (kg)	Mature Cow Wt (kg)	Scrotal Size (cm)	Days to Calving	Carcass Wt (kg)	EMA (sq cm)	Rib Fat (mm)	Rump Fat (mm)	Retail Beef Yield %	Intra-Muscular Fat %
EBV	+0.7	-1.7	-1.6	+3.5	+4	+23	+40	+54	+47	+0.8	-4.1	+33	+2.4	+0.8	+1.1	+0.6	+0.2
Acc	46%	38%	56%	78%	56%	72%	72%	74%	64%	50%	30%	64%	55%	63%	63%	60%	54%

Purchaser: _____ \$ _____

LOT 26 WOODBOURN UMAR U100 (PB)

Born: 08/08/2023 **Colour:** Silver **Tattoo:** 4W U100

THE GLEN BASS F104 (GR1)
 AYR PARK HUGH H77 (GR2)
 AYR PARK TRIAL & ERROR F92 (PB)
Sire: AYR PARK NEVADA N31 (PB)
 WILLALOOKA YORK Y96 (PB) (AI)
 AYR PARK KATRINA C50 (PB) (AI)
 AYR PARK KATRINA S1+97 (PB) (AI)
 MURFIELD APACHE A1 (PB) (AI)
 WILTSHIRE FIRST CLASS (PB)
 WILTSHIRE ZINNIA Z4 (PB) (AI)
Dam: WOODBOURN HEATHER J10 (PB)
 WILTSHIRE XTRA SPECIAL (PB) (AI)
 WOODBOURN MISS HEATHER B16 (PB)
 WOODBOURN HEATHER Y67 (PB)

NOTES: A very versatile bull for all jobs. He exhibits length and smoothness and moves very well. Please note his ideal grouping of figures (CE, GL and BW) which make him suitable for heifer joining. His very good 600 day adds to his appeal as an all round bull.

Scan 2/01/2025. WT: 650 EMA:91 P8: 12 RIB:9 IMF:5.6

January 2025 Murray Grey BREEDPLAN

	BIRTH				GROWTH					FERTILITY		CARCASS					
	Calving Ease Direct	Calving Ease Daughters	Gestation Length (days)	Birth Weight (kg)	Milk (kg)	200 - Day Wt (kg)	400 - Day Wt (kg)	600 - Day Wt (kg)	Mature Cow Wt (kg)	Scrotal Size (cm)	Days to Calving	Carcass Wt (kg)	EMA (sq cm)	Rib Fat (mm)	Rump Fat (mm)	Retail Beef Yield %	Intra-Muscular Fat %
EBV	+0.4	-0.1	-1.2	+3.6	+8	+26	+42	+64	+70	+0.8	-3.8	+37	+0.5	-0.5	-0.6	+0.6	+0.0
Acc	41%	32%	51%	79%	47%	71%	71%	72%	61%	43%	26%	61%	50%	59%	59%	55%	48%

Purchaser: _____ \$ _____

LOT 27 WOODBOURN U155 (CM)

Born: 26/08/2023 **Colour:** Grey **Tattoo:** 4W U155

ROGIALYN JUPITER (GR1) (AI)
 ROGIALYN JUPITER N13 (GR2)
 ROGIALYN TARELLA F9 (PB) (AI) (ET)
Sire: MOUNT MAJOR QUANTUM Q1 (PB)
 MOUNT MAJOR KINGSWOOD K6 (PB) (AI)
 MOUNT MAJOR DELVENE N8 (PB) (AI)
 MOUNT MAJOR DELVENE K4 (GR2) (AI)
Dam: WOODBOURN COMMERCIAL Q13 (CM)

NOTES: Commercial bull. This commercial bull has power and outlook. Would be an ideal bull for all commercial herds, from heifers to mature females. A young bull to have that growth and to be scanning 101 for EMA. As a commercial bull, he fits the position description perfectly with his high growth, exceptional carcass and especially his IMF which is in the top 1% of the breed.

Scan 2/01/2025. WT: 676 EMA: 101 P8:4 RIB:4 IMF:4.6

January 2025 Murray Grey BREEDPLAN

	BIRTH				GROWTH					FERTILITY		CARCASS					
	Calving Ease Direct	Calving Ease Daughters	Gestation Length (days)	Birth Weight (kg)	Milk (kg)	200 - Day Wt (kg)	400 - Day Wt (kg)	600 - Day Wt (kg)	Mature Cow Wt (kg)	Scrotal Size (cm)	Days to Calving	Carcass Wt (kg)	EMA (sq cm)	Rib Fat (mm)	Rump Fat (mm)	Retail Beef Yield %	Intra-Muscular Fat %
EBV	-1.1		-1.6	+4.4	+5	+29	+50	+72	+73	+0.5		+41	+1.0	-1.0	-1.0	+1.2	+1.1
Acc	30%		34%	58%	33%	62%	64%	65%	53%	39%		55%	44%	50%	50%	48%	41%

Purchaser: _____ \$ _____



Lot 25 Woodbourn Urelia U56 taken at 17 mths



Lot 26 Woodbourn Umar U100 taken at 16 mths



Lot 27 Woodbourn Com U155 taken at 16 mths

LOT 28 WOODBOURN UVALDO U86 (PB)

Born: 04/08/2023

Colour: Silver

Tattoo: 4W U86

MONTEREY HARMONY H62 (PB)
AYR PARK MAJOR M55 (PB)
AYR PARK MATINA J30 (GR2)

Sire: WOODBOURN SUTTON S44 (PB)

AYR PARK HUGH H77 (GR2)
WOODBOURN MISS VITELLO N99 (PB)
BIG PARK VITELLO D22 (PB)

WOODBOURN F18 HORNET (PB)
WOODBOURN MIDNIGHT M39 (PB)
WOODBOURN MISS HEATHER G66 (PB)

Dam: WOODBOURN MISS HEATHER P167 (PB)

GLENCAIRN TOP GUN W77 (PB)
WOODBOURN MISS HEATHER A12 (PB)
WOODBOURN MISS HEATHER X12 (PB)

NOTES: A super young bull that can be used in all situations. Moderate birth, high growth, excellent milk and outstanding carcass. He moves well, with a beautiful Murray Grey head, and is smooth in the shoulders. Overall, a great package.

Scan 2/01/2025. WT: 704 EMA: 103 P8: 13 RIB: 9 IMF: 6.4

January 2025 Murray Grey BREEDPLAN

EBV	BIRTH				GROWTH				FERTILITY		CARCASE						
	Calving Ease Direct	Calving Ease Daughters	Gestation Length (days)	Birth Weight (kg)	Milk (kg)	200 - Day Wt (kg)	400 - Day Wt (kg)	600 - Day Wt (kg)	Mature Cow Wt (kg)	Scrotal Size (cm)	Days to Calving	Carcass Wt (kg)	EMA (sq cm)	Rib Fat (mm)	Rump Fat (mm)	Retail Beef Yield %	Intra-Muscular Fat %
-0.8			-1.0	+4.1	+12	+31	+51	+73	+80	+0.5		+46	+1.8	+1.4	+1.9	-0.4	+0.9
Acc	34%		46%	77%	38%	69%	69%	71%	59%	29%		59%	47%	58%	58%	53%	45%

Purchaser: _____ \$ _____

LOT 29 WOODBOURN UNITED U73 (TW) (PB)

Born: 31/07/2023

Colour: Grey

Tattoo: 4W U73

ROGIALYN JUPITER (GR1) (AI)
ROGIALYN JUPITER N13 (GR2)
ROGIALYN TARELLA F9 (PB) (AI) (ET)

Sire: MOUNT MAJOR QUANTUM Q1 (PB)

MOUNT MAJOR KINGSWOOD K6 (PB) (AI)
MOUNT MAJOR DELVENE N8 (PB) (AI)
MOUNT MAJOR DELVENE K4 (GR2) (AI)

MONTEREY TALENT SCOUT A316 (PB) (ET)
BYRONFIELD E1 (PB)
WOODBOURN MISS GLORY B71 (PB)

Dam: WOODBOURN MISS BONN G8 (PB)

BUNDALEER PAYDAY P43 (PB)
BYRONFIELD D4 (PB) (AI) (ET)
KYNWOOD SUSAN 994 (PB)

NOTES: A bull with great outlook, length and flair. Like most of the other bulls in the catalogue, he has smooth, well laid in shoulders. He has a tight pizzle and moves well. A soft grey coloured bull by the big powerful sire, Quantum, this bull certainly has the ability to grow on to be a large impressive sire. With very good figures across the board, this bull would be a great asset in a replacement herd. As you will note, he is out of one of our favourite old 'G' cows.

Scan 2/01/2025. WT:604 EMA:99 P8:6 RIB:5 IMF:5.6

January 2025 Murray Grey BREEDPLAN

EBV	BIRTH				GROWTH				FERTILITY		CARCASE						
	Calving Ease Direct	Calving Ease Daughters	Gestation Length (days)	Birth Weight (kg)	Milk (kg)	200 - Day Wt (kg)	400 - Day Wt (kg)	600 - Day Wt (kg)	Mature Cow Wt (kg)	Scrotal Size (cm)	Days to Calving	Carcass Wt (kg)	EMA (sq cm)	Rib Fat (mm)	Rump Fat (mm)	Retail Beef Yield %	Intra-Muscular Fat %
-4.7	-0.2		-1.5	+5.5	+5	+33	+53	+80	+86	+0.2	-0.3	+48	+2.2	-1.4	-1.9	+1.9	+0.5
Acc	39%	28%	48%	76%	47%	69%	69%	67%	56%	44%	25%	58%	42%	53%	52%	49%	46%

Purchaser: _____ \$ _____

LOT 30 WOODBOURN UNDERCOVER U111 (PB)

Born: 11/08/2023

Colour: Silver

Tattoo: 4W U111

ROGIALYN JUPITER N13 (GR2)
MOUNT MAJOR QUANTUM Q1 (PB)
MOUNT MAJOR DELVENE N8 (PB) (AI)

Sire: WOODBOURN STUTTGART S96 (PB)

LINDSAY MAMBA M42 (PB)
EYLWARRA SANDS ROXANNE Q321 (PB)
EYLWARRA SANDS ROXANNE K2 (PB)

AYR PARK HUGH H77 (GR2)
WOODBOURN QUIZILLA Q39 (PB)
WOODBOURN CARRIE J94 (PB)

Dam: WOODBOURN MISS BARBARA S70 (PB)

MELALEUCA KARL K231 (PB)
WOODBOURN MISS BARBARA Q65 (PB)
WOODBOURN MISS BARBARA E41 (PB)

NOTES: What a wonderful young bull to put over heifers. Out of a heifer himself, his figures are top rate across the page from calving ease, through gestation length, high growth and exceptional carcass. He is not excessive in frame, but would be a top bull to produce vealers. A bull with capacity, muscle and softness, exhibiting excellent shape and muscle.

Scan 2/01/2025. WT: 610 EMA:102 P8:14 RIB:9 IMF:6.1

January 2025 Murray Grey BREEDPLAN

EBV	BIRTH				GROWTH				FERTILITY		CARCASE						
	Calving Ease Direct	Calving Ease Daughters	Gestation Length (days)	Birth Weight (kg)	Milk (kg)	200 - Day Wt (kg)	400 - Day Wt (kg)	600 - Day Wt (kg)	Mature Cow Wt (kg)	Scrotal Size (cm)	Days to Calving	Carcass Wt (kg)	EMA (sq cm)	Rib Fat (mm)	Rump Fat (mm)	Retail Beef Yield %	Intra-Muscular Fat %
+0.5			-1.4	+2.6	+6	+24	+42	+61	+68	+0.2		+38	+1.7	+2.4	+3.4	-1.1	+1.3
Acc	31%		43%	76%	32%	67%	67%	69%	56%	32%		56%	44%	54%	54%	50%	42%

Purchaser: _____ \$ _____



Lot 28 Woodbourn Uvaldo U86 taken at 16 mths



Lot 29 Woodbourn United U73 taken at 17mths



Lot 30 Woodbourn Undercover U111 taken at 16 mths

LOT 31 WOODBOURN URUGUAY U160 (PB)

Born: 30/08/2023

Colour: Silver

Tattoo: 4W U160

ROGIALYN JUPITER (GR1) (AI)
 ROGIALYN JUPITER N13 (GR2)
 ROGIALYN TARELLA F9 (PB) (AI) (ET)
Sire: MOUNT MAJOR QUANTUM Q1 (PB)
 MOUNT MAJOR KINGSWOOD K6 (PB) (AI)
 MOUNT MAJOR DELVENE N8 (PB) (AI)
 MOUNT MAJOR DELVENE K4 (GR2) (AI)
 MELALEUCA GRID LOCK G15 (PB)
 MELALEUCA KARL K231 (PB)
 MELALEUCA DAIYA H77 (PB)
Dam: WOODBOURN MISS PASQUALE N116 (PB)
 THOLOGOLONG YALLANGATTA Y3 (PB)
 BIG PARK PASQUALE D16 (PB)
 BIG PARK PASCALE X7 (PB)

NOTES: Again, this very young, very correct bull would be suitable for use over heifers. He has a beautiful, appealing head and a tight sheath. An all round bull for use over both cows and heifers. Because of his size at this young age, he should grow on to be a very good, large bull, especially when you consider his excellent all round figures.

Scan 2/01/2025. WT: 642 EMA:102 P8:12 RIB:8 IMF:5.6

January 2025 Murray Grey BREEDPLAN

EBV	BIRTH				GROWTH				FERTILITY		CARCASE						
	Calving Ease Direct	Calving Ease Daughters	Gestation Length (days)	Birth Weight (kg)	Milk (kg)	200 - Day Wt (kg)	400 - Day Wt (kg)	600 - Day Wt (kg)	Mature Cow Wt (kg)	Scrotal Size (cm)	Days to Calving	Carcase Wt (kg)	EMA (sq cm)	Rib Fat (mm)	Rump Fat (mm)	Retail Beef Yield %	Intra-Muscular Fat %
+0.0	-0.7	-2.1	+3.3	+5	+27	+46	+66	+70	+0.1	-1.8	+42	+1.7	+0.7	+1.0	+0.3	+1.0	
Acc	40%	29%	50%	77%	43%	70%	71%	72%	61%	47%	26%	61%	51%	61%	60%	56%	50%

Purchaser: _____ \$ _____

LOT 32 WOODBOURN UBALDO U126 (PB)

Born: 14/08/2023

Colour: Grey

Tattoo: 4W U126

THE GLEN BASS F104 (GR1)
 AYR PARK HUGH H77 (GR2)
 AYR PARK TRIAL & ERROR F92 (PB)
Sire: AYR PARK NEVADA N31 (PB)
 WILLALOOKA YORK Y96 (PB) (AI)
 AYR PARK KATRINA C50 (PB) (AI)
 AYR PARK KATRINA S1+97 (PB) (AI)
 YAMBA HORTINESS (PB)
 WOODBOURN LUTHER L40 (PB)
 WOODBOURN SALLY A42 (PB)
Dam: WOODBOURN Y BARBARA P148 (PB)
 BUNDALEER X ROAD X37 (PB)
 WOODBOURN MISS Y BARBARA C106 (PB)
 YAMBA BARBARA T30 (PB) (AI)

NOTES: An ideal heifer joining bull here, with his well laid in shoulders, smooth body and birth weight of 3.3. plus -1.1 gestation length. He is very smooth, long and thick and has a tight pizzle.

Scan 2/01/2025. WT: 638 EMA: 97 P8: 9 RIB: 7 IMF: 5.3

January 2025 Murray Grey BREEDPLAN

EBV	BIRTH				GROWTH				FERTILITY		CARCASE						
	Calving Ease Direct	Calving Ease Daughters	Gestation Length (days)	Birth Weight (kg)	Milk (kg)	200 - Day Wt (kg)	400 - Day Wt (kg)	600 - Day Wt (kg)	Mature Cow Wt (kg)	Scrotal Size (cm)	Days to Calving	Carcase Wt (kg)	EMA (sq cm)	Rib Fat (mm)	Rump Fat (mm)	Retail Beef Yield %	Intra-Muscular Fat %
+0.7	+0.0	-0.9	+3.1	+8	+25	+42	+58	+64	+0.8	-3.9	+35	+0.3	+0.5	+0.6	-0.5	+0.7	
Acc	39%	31%	50%	78%	42%	70%	70%	72%	60%	43%	25%	60%	50%	59%	59%	55%	47%

Purchaser: _____ \$ _____

LOT 33 WOODBOURN URIEL U142 (PB)

Born: 20/08/2023

Colour: Silver

Tattoo: 4W U142

ROGIALYN JUPITER (GR1) (AI)
 ROGIALYN JUPITER N13 (GR2)
 ROGIALYN TARELLA F9 (PB) (AI) (ET)
Sire: MOUNT MAJOR QUANTUM Q1 (PB)
 MOUNT MAJOR KINGSWOOD K6 (PB) (AI)
 MOUNT MAJOR DELVENE N8 (PB) (AI)
 MOUNT MAJOR DELVENE K4 (GR2) (AI)
 MELALEUCA GRID LOCK G15 (PB)
 MELALEUCA KARL K231 (PB)
 MELALEUCA DAIYA H77 (PB)
Dam: WOODBOURN MISS JACINTA N122 (PB)
 NAWARRA BANANA BENDER (PB)
 WOODBOURN MISS JACINTA J54 (PB)
 SILVERGUMS JACINTA Z86 (PB)

NOTES: In past years, bulls of this quality would certainly have been higher in the catalogue. This bull exhibits muscle, shape, smoothness and easy doing, as can be seen in his fat figures (top 5% for the breed). Again, an extremely low birth weight bull with ideal calving ease and gestation length figures. He certainly would add to a breeding herd. For those looking for IMF (top 1% for the breed), we suggest you look at this bull.

Scan 2/01/2025. WT: 598 EMA: 92 P8: 15 RIB:9 IMF:6.6

January 2025 Murray Grey BREEDPLAN

EBV	BIRTH				GROWTH				FERTILITY		CARCASE						
	Calving Ease Direct	Calving Ease Daughters	Gestation Length (days)	Birth Weight (kg)	Milk (kg)	200 - Day Wt (kg)	400 - Day Wt (kg)	600 - Day Wt (kg)	Mature Cow Wt (kg)	Scrotal Size (cm)	Days to Calving	Carcase Wt (kg)	EMA (sq cm)	Rib Fat (mm)	Rump Fat (mm)	Retail Beef Yield %	Intra-Muscular Fat %
+3.6	+0.5	-2.9	-0.3	+4	+15	+28	+40	+52	+0.0	-3.4	+30	+1.2	+2.3	+3.2	-1.2	+1.7	
Acc	40%	29%	51%	78%	44%	71%	71%	72%	60%	49%	26%	61%	51%	60%	60%	56%	50%

Purchaser: _____ \$ _____



Lot 31 Woodbourn Uruguay U160 taken at 16 mths



Lot 32 Woodbourn Ubaldo U126 taken at 16 mths



Lot 33 Woodbourn Uriel U142 taken at 16 mths

LOT 34 WOODBOURN UMIKA U163 (PB)

Born: 30/08/2023 Colour: Grey Tattoo: 4W U163

ROGIALYN JUPITER (GR1) (AI)
 ROGIALYN JUPITER N13 (GR2)
 ROGIALYN TARELLA F9 (PB) (AI) (ET)
Sire: MOUNT MAJOR QUANTUM Q1 (PB)
 MOUNT MAJOR KINGSWOOD K6 (PB) (AI)
 MOUNT MAJOR DELVENE N8 (PB) (AI)
 MOUNT MAJOR DELVENE K4 (GR2) (AI)
 MELALEUCA GRID LOCK G15 (PB)
 MELALEUCA KARL K231 (PB)
 MELALEUCA DAIYA H77 (PB)
Dam: WOODBOURN MISS JEANETTE R30 (PB)
 MELALEUCA ARTILLARY A16 (PB)
 WOODBOURN MISS JEANETTE D51 (PB)
 WOODBOURN MISS JEANETTE W31 (PB)

NOTES: By Quantum, this ideal heifer bull is out of the very good female, Woodbourn Miss Jeanette R30 at Lot 42, who is being offered in this year's sale. Like his dam and his sire, this very young bull has excellent figures right across the page. This is a very correct, thick, soft young bull, absolutely ideal to us over heifers.

Scan 2/01/2025. WT: 594 EMA:97 P8: 11 RIB: 7 IMF:5.6

January 2025 Murray Grey BREEDPLAN

EBV	BIRTH				GROWTH					FERTILITY		CARCASE					
	Calving Ease Direct	Calving Ease Daughters	Gestation Length (days)	Birth Weight (kg)	Milk (kg)	200 - Day Wt (kg)	400 - Day Wt (kg)	600 - Day Wt (kg)	Mature Cow Wt (kg)	Scrotal Size (cm)	Days to Calving	Carcase Wt (kg)	EMA (sq cm)	Rib Fat (mm)	Rump Fat (mm)	Retail Beef Yield %	Intra-Muscular Fat %
-0.3	+0.2	-1.8	+2.5	+3	+23	+44	+58	+64	+0.2	-3.0	+39	+1.9	+0.8	+1.2	+0.1	+1.2	
Acc	40%	29%	50%	77%	43%	70%	71%	72%	61%	48%	27%	61%	51%	60%	60%	56%	50%

Purchaser: _____ \$ _____

LOT 35 WOODBOURN UDAR U168 (PB)

Born: 04/09/2023 Colour: Grey Tattoo: 4W U168

ROGIALYN JUPITER (GR1) (AI)
 ROGIALYN JUPITER N13 (GR2)
 ROGIALYN TARELLA F9 (PB) (AI) (ET)
Sire: MOUNT MAJOR QUANTUM Q1 (PB)
 MOUNT MAJOR KINGSWOOD K6 (PB) (AI)
 MOUNT MAJOR DELVENE N8 (PB) (AI)
 MOUNT MAJOR DELVENE K4 (GR2) (AI)
 MONTEREY HARMONY H62 (PB)
 AYR PARK MAJOR M55 (PB)
 AYR PARK MATINA J30 (GR2)
Dam: WOODBOURN MISS EVITA R89 (PB)
 WOODBOURN REALLY WICKED D75 (PB)
 WOODBOURN MISS EVITA G60 (PB)
 WOODBOURN EVITA E17 (PB)

NOTES: This very young bull by Quantum would make an ideal heifer joining bull. His body is smooth and his shoulders are well laid in. We note his low birth for use over heifers, but also his Breedplan figures right across are very very good. IMF in the top 5% for the breed. A young bull with shape, a tight pizzelle and great outlook.

Scan 2/01/2025. WT:620 EMA:96 P8: 11 RIB:7 IMF:6.8

January 2025 Murray Grey BREEDPLAN

EBV	BIRTH				GROWTH					FERTILITY		CARCASE					
	Calving Ease Direct	Calving Ease Daughters	Gestation Length (days)	Birth Weight (kg)	Milk (kg)	200 - Day Wt (kg)	400 - Day Wt (kg)	600 - Day Wt (kg)	Mature Cow Wt (kg)	Scrotal Size (cm)	Days to Calving	Carcase Wt (kg)	EMA (sq cm)	Rib Fat (mm)	Rump Fat (mm)	Retail Beef Yield %	Intra-Muscular Fat %
-0.5	+0.7	-2.0	+3.0	+5	+28	+48	+66	+76	+0.0		+44	+1.5	+0.6	+0.9	+0.0	+1.4	
Acc	37%	25%	48%	77%	40%	70%	70%	72%	60%	44%		60%	50%	60%	60%	55%	49%

Purchaser: _____ \$ _____

LOT 36 WOODBOURN UMOJA U157 (PB)

Born: 28/08/2023 Colour: Silver Tattoo: 4W U157

THE GLEN BASS F104 (GR1)
 AYR PARK HUGH H77 (GR2)
 AYR PARK TRIAL & ERROR F92 (PB)
Sire: AYR PARK NEVADA N31 (PB)
 WILLALOOKA YORK Y96 (PB) (AI)
 AYR PARK KATRINA C50 (PB) (AI)
 AYR PARK KATRINA S1+97 (PB) (AI)
 GNOLEDA ZAC (PB)
 NAWARRA BANANA BENDER (PB)
 SPRINGWELL BANANA T43 (PB)
Dam: WOODBOURN MISS HAMPERS PRIDE H51 (PB)
 WALTEELA VICTORIOUS S50+97 (PB)
 WOODBOURN MISS HAMPERS PRIDE (PB)
 WOODBOURN HAMPERS PRIDE K92 (PB)

NOTES: One of the youngest in the catalogue. His very low birthweight and ideal calving ease and gestation length would, again, make him ideal for heifer joining, as would his smooth shoulders. His body is long and well shaped and his hip width would be satisfactory for heifer calving. Tight pizzelle.

Scan 2/01/2025. WT: 588 EMA: 92 P8: 7 RIB:6 IMF:5.2

January 2025 Murray Grey BREEDPLAN

EBV	BIRTH				GROWTH					FERTILITY		CARCASE					
	Calving Ease Direct	Calving Ease Daughters	Gestation Length (days)	Birth Weight (kg)	Milk (kg)	200 - Day Wt (kg)	400 - Day Wt (kg)	600 - Day Wt (kg)	Mature Cow Wt (kg)	Scrotal Size (cm)	Days to Calving	Carcase Wt (kg)	EMA (sq cm)	Rib Fat (mm)	Rump Fat (mm)	Retail Beef Yield %	Intra-Muscular Fat %
+0.3	+0.3	-1.5	+2.9	+7	+23	+41	+54	+58	+0.5	-2.4	+34	+0.5	-0.5	-0.6	+0.4	+0.2	
Acc	41%	32%	51%	79%	47%	71%	71%	72%	61%	44%	27%	62%	51%	60%	60%	56%	49%

Purchaser: _____ \$ _____



Lot 34 Woodbourn Umika U163 taken at 16 mths



Lot 35 Woodbourn Udar U168 taken at 15 mths



Lot 36 Woodbourn Umoja U157 taken at 16 mths

LOT 37 WOODBOURN UPTOWN U103 (PB)

Born: 09/08/2023 Colour: Silver Tattoo: 4W U103

MELALEUCA GRID LOCK G15 (PB)
 MELALEUCA KARL K231 (PB)
 MELALEUCA DAIYA H77 (PB)
Sire: WOODBOURN SEATTLE S40 (PB)
 ONWARD SAM (PB)
 BIG PARK BARBARA H9 (PB)
 WOODBOURN MISS Y BARBARA C106 (PB)
 MONTEREY HARMONY H62 (PB)
 AYR PARK MAJOR M55 (PB)
 AYR PARK MATINA J30 (GR2)
Dam: WOODBOURN MISS CARRIE S1 (PB)
 GLENLIAM FARM XCHANGE X97 (PB)
 WOODBOURN MISS CARRIE G86 (PB)
 WOODBOURN CARRIE X2 (PB)

NOTES: A very very good bull that comes in at Lot 37. Deep barrelled, long bull with shape and a tight pizzle. He is by one of our heifer joining bulls, Woodbourn Seattle S40 and is out of a heifer. This bull has particularly good figures, especially birth weight, calving ease, gestation length and carcass. Rib and rump fats are in the top 5% for the breed. If you are thinking of a heifer joining bull, I would suggest you look at these figures carefully. This is certainly an easy doing bull.

Scan 2/01/2025. WT: 636 EMA: 109 P8: 11 RIB: 6 IMF:5.9

January 2025 Murray Grey BREEDPLAN

EBV	BIRTH				GROWTH					FERTILITY		CARCASS					
	Calving Ease Direct	Calving Ease Daughters	Gestation Length (days)	Birth Weight (kg)	Milk (kg)	200 - Day Wt (kg)	400 - Day Wt (kg)	600 - Day Wt (kg)	Mature Cow Wt (kg)	Scrotal Size (cm)	Days to Calving	Carcass Wt (kg)	EMA (sq cm)	Rib Fat (mm)	Rump Fat (mm)	Retail Beef Yield %	Intra-Muscular Fat %
+2.3	-1.4	-1.3	+2.0	+5	+20	+36	+51	+53	+0.5		+37	+2.7	+1.2	+1.6	+0.5	+0.6	
Acc	34%	26%	46%	76%	40%	68%	68%	70%	58%	35%		58%	47%	57%	57%	52%	45%

Purchaser: _____ \$ _____

LOT 38 WOODBOURN UFFI U167 (PB)

Born: 01/09/2023 Colour: Grey Tattoo: 4W U167

MONTEREY HARMONY H62 (PB)
 AYR PARK MAJOR M55 (PB)
 AYR PARK MATINA J30 (GR2)
Sire: WOODBOURN SUTTON S44 (PB)
 AYR PARK HUGH H77 (GR2)
 WOODBOURN MISS VITELLO N99 (PB)
 BIG PARK VITELLO D22 (PB)
 ONWARD MANUKA (PB) (AI)
 ONWARD JEREMIAH (PB)
 ONDIONG JENNIFER 118TH+95 (PB) (AI)
Dam: BIG PARK PASQUALE G5 (PB)
 THOLOGOLONG YALLANGATTA Y3 (PB)
 BIG PARK PASQUALE D16 (PB)
 BIG PARK PASCALE X7 (PB)

NOTES: A great heifer joining bull to finish up the catalogue. As you would expect, he is long and smooth with a low +2.6 birth weight EBV...so ideal for the job. A tight pizzle. As the third youngest bull in the catalogue, his EMA scan is very high. He is out of a very old cow who has had 10 calves.

Scan 2/01/2025. WT: 604 EMA:101 P8: 12 RIB: 6 IMF:5.4

January 2025 Murray Grey BREEDPLAN

EBV	BIRTH				GROWTH					FERTILITY		CARCASS					
	Calving Ease Direct	Calving Ease Daughters	Gestation Length (days)	Birth Weight (kg)	Milk (kg)	200 - Day Wt (kg)	400 - Day Wt (kg)	600 - Day Wt (kg)	Mature Cow Wt (kg)	Scrotal Size (cm)	Days to Calving	Carcass Wt (kg)	EMA (sq cm)	Rib Fat (mm)	Rump Fat (mm)	Retail Beef Yield %	Intra-Muscular Fat %
+2.6	+0.6	-0.8	+2.2	+11	+24	+40	+56	+65	+0.5		+43	+2.1	+0.9	+1.3	+0.6	+0.3	
Acc	36%	27%	48%	77%	44%	70%	70%	72%	60%	32%		60%	48%	57%	57%	52%	45%

Purchaser: _____ \$ _____

CYDECTIN[®] PLATINUM

CYDECTIN PLATINUM FOCUSED ON PRODUCTIVITY

MEAN WEIGHT GAIN (KG) AFTER 63 DAYS

Group	Mean Weight Gain (kg)
Cydectin Platinum	52kg
Dectomax	44kg (+8kg)
Control	41kg (-11kg)

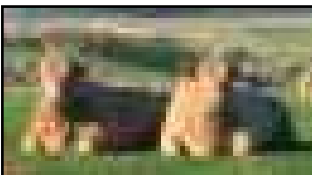
(P<0.05 at Day 28 and 0.08 from Day 42)



Lot 37 Woodbourn Uptown U103 taken at 16 mths



Lot 38 Woodbourn Uffi U167 taken at 15 mths



TAKING DELIVERY OF YOUR NEW BULL

To help your new bull or bulls settle into their new home as well as possible, the following points may be of some help.

- At Woodbourn, all bulls are run in large mobs all their life, so they have always had plenty of mates around and have never been alone.
- It's a good idea to have some of your own cattle in the yards when your new bull arrives; a handful of steers, or PTIC cows. Just something to keep them company, whilst they survey their new surroundings.
- At Woodbourn, we handle our cattle quietly and confidently, we always give our cattle respect and our cattle respect us. We use side by side vehicles and a 4X4 motorbike to move stock. The bulls have never been handled with horses.
- Handle your new bull quietly and with respect and he will settle into his new home well and will be easy to handle.

Cressy Petroleum

16 Main Street Cressy

Locally owned and operated Fuel Distributor
Servicing the greater Northern Midlands area.
Full range of fuel and lubes.

- Excellent service • Specialising in agricultural needs • Competitive pricing

Please contact:

Office: 03 6397 6356

Stephen: 0418 588 234

Corey: 0439 320 270

HELPING YOU GROW A STRONGER BUSINESS

Nutrien Ag Solutions is committed to delivering a diverse range of products and services at the best possible value to our customers.

We work hard to know your business and endeavour to help you grow it.

Specialising in:



MERCHANDISE



LIVESTOCK



FARM SERVICES



FINANCE



INSURANCE



REAL ESTATE



WOOL

Nutrien Ag Solutions Longford

13 Marlborough St, Longford TAS 7301 | (03) 6391 3140

NutrienAgSolutions.com.au

Nutrien
Ag Solutions®

COMMERCIAL HERD THRIVING IN THE ROARING FORTIES



In the far North West corner of Tasmania, in the roaring forties, is a large commercial herd of Murray Greys.

Owned and run by Paul Saward and his son James, this large breeding and grass fattening enterprise has been breeding Murray Greys on Woodbourn bloodlines for twenty five years.

Having been raised in this area, it was a natural progression for Paul to continue the farming operation and he started working on the farm in 1968. The operation has changed over the years to an all out beef program. In 1996, Murray Greys were introduced, after trying a number of other breeds. When asked why he chose to use Murray Greys Paul said "We were looking for a certain type of beef animal, a true British breed type, and we finally settled on Murray Greys because their temperament was what we were looking for, in addition to the inherent marbling and overall carcass superiority. Of course, finance came into the decision as well. We could buy the best of the breed for half the price at a Murray Grey sale, not the mid or lower range with other breeds."

Paul added, "In relation to bloodlines, we have tried a few others, but have settled on Woodbourn, as they provide, in large numbers, bulls with the BREEDPLAN figures we require; notably IMF, fats and generally strong carcass data. The structure, frame, feet and temperament of the Woodbourn bulls suit us and that is why we source our bulls from Charles and Janet Wallace every year."

As the Sawards fatten their stock on grass only, the input from their sire selection is extremely important.

Their animals are sold through the nearby export works, Greenhams, only 40 kilometres away and it is vital that the animals offered fit requirements of a number of brands set up by Greenhams. The main brand is the well known Cape Grim, with others being Vintage beef for older cows, not less than sixty months, which have superior marbling. The older the animal the higher the marbling. There is also the GAP program, Global Animal Partnership, which involves an annual audit. All the cattle are part of the Never Ever Program which requires a grass fattening regime with no grain.

The Sawards target two markets. The heavier group which are sold at 28 - 30 months of age at 340 - 380 kgs (approximately 700kgs live weight) and the lighter group, which are the yearling steers and empty heifers at 240 - 260 kgs, which suits the Greenham's grid. To meet these weights, bull selection is most important. When asked what criteria he uses in selecting new sires, Paul said, "A frame score of 5 to 6 is ideal, but our main emphasis is on carcass quality. To meet MSA and other grid requirements, fats, EMA and IMF are the critical factors for us. We are rewarded for marbling and obtain a higher price for meeting MSA indexes. Overall, we achieve greater than 95% MSA."

The management of the female herd is strictly controlled. Heifers are multiple joined for four weeks, and the cows are joined for six weeks. Any empty females are fattened and sold. With this regime, a very fertile herd of females has been created.

In this beautiful part of Tasmania, with its reliable rainfall of 1150mm, Paul and his family have shown dedication and care in producing these wonderful Murray Grey cattle.



A group of older heavier steers ready to go



A group of 157 thirteen to fourteen month old steers



Magnificent matrons with calves at foot

8 Registered Mature Females

LOT 39 WOODBOURN MISS DEBRA S33 (PB)

Born: 18/03/2021 **Colour:** Silver **Tattoo:** 4W S33

MONTEREY MEGAFORCE (PB)
 MONTEREY HARMONY H62 (PB)
 MONTEREY SHOWGIRL E206 (PB)
Sire: AYR PARK MAJOR M55 (PB)
 THE GLEN BASS F104 (GR1)
 AYR PARK MATINA J30 (GR2)
 AYR PARK MATINA F80 (PB)
 WILLALOOKA THUG (PB)
 WILLALOOKA WINDSOR W191 (PB)
 WILLALOOKA CARRIE R18 (GR1)
Dam: LINDSAY DEBRA B132 (PB)
 HIGHWOOD AMBASSADOR (PB) (AI)
 LINDSAY DEBRA U21+99 (PB)
 LINDSAY DEBRA M57 (PB)

NOTES: An outstanding young cow on her second calf. A dark silver dapple with a very good calf at foot. This cow certainly has the potential to grow on and breed superior animals like her calf at foot. Grey female calf at foot, Woodbourn Debra V166, born 02/09/2024, tattoo: 4W24V166, sire: Kurani Stephen S10. Depastured with Mount Major Roger R29 from 22/10/2024 until 15/11/2024 and then Woodbourn Sonic S16 until 27/12/2024. PTIC

January 2025 Murray Grey BREEDPLAN

	BIRTH				GROWTH					FERTILITY		CARCASE					
	Calving Ease Direct	Calving Ease Daughters	Gestation Length (days)	Birth Weight (kg)	Milk (kg)	200 - Day Wt (kg)	400 - Day Wt (kg)	600 - Day Wt (kg)	Mature Cow Wt (kg)	Scrotal Size (cm)	Days to Calving	Carcase Wt (kg)	EMA (sq cm)	Rib Fat (mm)	Rump Fat (mm)	Retail Beef Yield %	Intra-Muscular Fat %
EBV	+2.5	+2.5	-2.0	+1.5	+3	+19	+33	+44	+42	+0.0	-0.1	+29	+1.5	-0.8	-1.2	+0.9	+0.1
Acc	44%	31%	52%	80%	54%	73%	71%	74%	62%	43%	31%	62%	47%	63%	63%	57%	53%

Purchaser: _____ \$ _____

LOT 40 WOODBOURN MISS EVITA T22 (PB)

Born: 16/03/2022 **Colour:** Silver **Tattoo:** 4W T22

GLENLIAM FARM ZEPPLIN Z80 (PB)
 GLENLIAM FARM JUGERNAUT J104 (PB)
 GLENLIAM FARM GREY LADY X57 (PB)
Sire: CARLINGA NAPOLEON (PB)
 JYNDARRA ECLIPSE E6 (PB) (AI)
 CARLINGA LADY LINDA J43 (GR2)
 CARLINGA LADY LINDA Z48 (GR1) (AI)
 KELSO YOGO Y13 (PB) (AI)
 KELSO CRACKER C17 (PB)
 LINDSAY DONNA Z13 (GR2)
Dam: WOODBOURN MISS EVITA L71 (PB)
 KYNWOOD TOP EDITION (PB)
 BIG PARK EVITA Z66 (PB)
 BIG PARK VALDAWN V55 (PB)

NOTES: This first calver is doing a tremendous job on her beautiful calf. A top quality unit. A young female who is structurally very sound and who is certainly breeding better than herself, which is what we are all about. For those wanting to improve their herd, I would recommend this unit. Please note her beautifully balanced figures, right through from calving ease to her great carcass EBV's. Silver female calf at foot, Woodbourn Miss Evita V60, born 17/07/2024, tattoo: 4W24V60, sire: Woodbourn Transformer T23. Lindsay Tapioca T97 from 22/10/2024 until 15/11/2024 and then Cadfor Tungsten T121 until 27/12/2024. PTIC

January 2025 Murray Grey BREEDPLAN

	BIRTH				GROWTH					FERTILITY		CARCASE					
	Calving Ease Direct	Calving Ease Daughters	Gestation Length (days)	Birth Weight (kg)	Milk (kg)	200 - Day Wt (kg)	400 - Day Wt (kg)	600 - Day Wt (kg)	Mature Cow Wt (kg)	Scrotal Size (cm)	Days to Calving	Carcase Wt (kg)	EMA (sq cm)	Rib Fat (mm)	Rump Fat (mm)	Retail Beef Yield %	Intra-Muscular Fat %
EBV	+3.2	+1.3	-1.5	+2.5	+5	+25	+44	+64	+72	+0.2	-1.6	+45	+2.7	+0.4	+0.6	+1.0	+0.3
Acc	43%	33%	53%	79%	49%	71%	72%	73%	62%	47%	29%	62%	48%	62%	62%	57%	54%

Purchaser: _____ \$ _____

LOT 41 WOODBOURN RHIAN T139 (PB)

Born: 25/08/2022 **Colour:** Grey **Tattoo:** 4W T139

ROGIALYN JUPITER (GR1) (AI)
 ROGIALYN JUPITER N13 (GR2)
 ROGIALYN TARELLA F9 (PB) (AI) (ET)
Sire: MOUNT MAJOR QUANTUM Q1 (PB)
 MOUNT MAJOR KINGSWOOD K6 (PB) (AI)
 MOUNT MAJOR DELVENE N8 (PB) (AI)
 MOUNT MAJOR DELVENE K4 (GR2) (AI)
 THE GLEN BASS F104 (GR1)
 AYR PARK HUGH H77 (GR2)
 AYR PARK TRIAL & ERROR F92 (PB)
Dam: WOODBOURN MISS RHIAN Q8 (PB)
 YAMBA HORTINESS (PB)
 WOODBOURN MISS RHIAN M106 (PB)
 WOODBOURN RHIAN Y3 (PB)

NOTES: This beautiful first calver and her calf are exceptional. Structurally she is very sound with a very good udder, which is evidenced in her calf. For those who like Breedplan, I strongly recommend you take the time to study this female's figures carefully. She is certainly one of the picks of her age group. Please note, the calf has a large birth mark on her neck on the offside. Grey female calf at foot, Woodbourn Rhian V103, born 06/08/2024, tattoo: 4W24V103, Sire: Woodbourn Trinidad T37. Depastured with Lindsay Tapioca T97 from 22/10/2024 until 15/11/2024 and then Cadfor Tungsten T121 until 27/12/2024. PTIC

January 2025 Murray Grey BREEDPLAN

	BIRTH				GROWTH					FERTILITY		CARCASE					
	Calving Ease Direct	Calving Ease Daughters	Gestation Length (days)	Birth Weight (kg)	Milk (kg)	200 - Day Wt (kg)	400 - Day Wt (kg)	600 - Day Wt (kg)	Mature Cow Wt (kg)	Scrotal Size (cm)	Days to Calving	Carcase Wt (kg)	EMA (sq cm)	Rib Fat (mm)	Rump Fat (mm)	Retail Beef Yield %	Intra-Muscular Fat %
EBV	-0.6	-1.3	-2.0	+4.8	+8	+37	+69	+102	+116	+0.5	-1.6	+65	+1.9	-0.4	-0.4	+0.8	+1.1
Acc	41%	30%	50%	78%	42%	71%	71%	72%	61%	49%	28%	61%	49%	65%	65%	59%	55%

Purchaser: _____ \$ _____



Lot 39 Woodbourn Miss Debra S33



Lot 40 Woodbourn Miss Evita T22



Lot 41 Woodbourn Rhian T139

LOT 42 WOODBOURN MISS JEANETTE R30 (PB)

Born: 23/03/2020 Colour: Silver Tattoo: 4W R30

MELALEUCA DEVIL D23 (PB)
 MELALEUCA GRID LOCK G15 (PB)
 MELALEUCA ESBAY D195 (PB)
Sire: MELALEUCA KARL K231 (PB)
 MELALEUCA EWEN E55 (PB)
 MELALEUCA DAIYA H77 (PB)
 MELALEUCA DAIYA C167 (PB)
 MONTEREY EXCEPTIONAL (PB)
 MELALEUCA ARTILLARY A16 (PB)
 MELALEUCA ESMERELDA U65+99 (PB) (AI)
Dam: WOODBOURN MISS JEANETTE D51 (PB)
 WOODBOURN U30+99 (PB)
 WOODBOURN MISS JEANETTE W31 (PB)
 WOODBOURN MISS JEANETTE U27+99 (PB)

NOTES: A first class outfit. This cow shows capacity, smoothness and overall femininity. Certainly one of the picks. Again, a cow producing calves every year. Ideal calving ease and gestation figures and excellent carcass data. Her calf at foot also displays an impressive spread of EBV's. Silver female calf at foot, Woodbourn Miss Jeanette V192, born 27/09/2024, tattoo: 4W24V192, sire: Woodbourn Sonic S16. Depastured with Woodbourn Sonic S16 from 15/10/2024 until 15/11/2024 and then with Mount Major Roger R29 until 27/12/2024. PTIC

January 2025 Murray Grey BREEDPLAN

EBV	BIRTH				GROWTH					FERTILITY		CARCASE					
	Calving Ease Direct	Calving Ease Daughters	Gestation Length (days)	Birth Weight (kg)	Milk (kg)	200 - Day Wt (kg)	400 - Day Wt (kg)	600 - Day Wt (kg)	Mature Cow Wt (kg)	Scrotal Size (cm)	Days to Calving	Carcass Wt (kg)	EMA (sq cm)	Rib Fat (mm)	Rump Fat (mm)	Retail Beef Yield %	Intra-Muscular Fat %
EBV	+1.2	-0.8	-1.1	+2.7	+3	+23	+41	+49	+48	+0.7	-4.8	+34	+1.7	+0.9	+1.3	+0.2	+0.5
Acc	51%	42%	61%	82%	64%	75%	76%	77%	68%	53%	36%	67%	56%	69%	69%	64%	59%

Purchaser: _____ \$ _____

LOT 43 WOODBOURN MISS JEANETTE S103 (PB)

Born: 13/08/2021 Colour: Silver Tattoo: 4W S103

THE GLEN BASS H018 (GR2)
 BURNETT DOWNS KENWORTH K13 (PB)
 BURNETT DOWNS WILMA E28 (PB)
Sire: ONWARD NOUGAT (PB)
 KELSO BABALON B15 (PB)
 ONWARD DEBBIE F46 (PB)
 ONWARD DEBBIE 7TH (PB)
 MELALEUCA GHANDI G112 (PB)
 WOODBOURN KHAN K6 (PB)
 BYRONFIELD D4 (PB) (AI) (ET)
Dam: WOODBOURN MISS JEANETTE M67 (PB)
 JYNDARRA WARRIOR W3 (PB) (AI)
 WOODBOURN MISS JEANETTE A74 (PB)
 WOODBOURN JEANETTE P86 (GR1)

NOTES: A large framed cow with great capacity, width and femininity. She is rearing the youngest calf in the herd. This cow takes your eye for her overall size and breeding potential. Silver female calf at foot, Woodbourn Miss Jeanette V195, born 30/09/2024, tattoo: 4W24V195, sire Woodbourn Sonic S16. Depastured with Cadfor Tungsten T121 from 21/10/2024, then due to injury, Tungsten was replaced with Woodbourn Rosevears R130 until 15/11/2024, and then Woodbourn Trinidad T37 until 27/12/2024. PTIC

January 2025 Murray Grey BREEDPLAN

EBV	BIRTH				GROWTH					FERTILITY		CARCASE					
	Calving Ease Direct	Calving Ease Daughters	Gestation Length (days)	Birth Weight (kg)	Milk (kg)	200 - Day Wt (kg)	400 - Day Wt (kg)	600 - Day Wt (kg)	Mature Cow Wt (kg)	Scrotal Size (cm)	Days to Calving	Carcass Wt (kg)	EMA (sq cm)	Rib Fat (mm)	Rump Fat (mm)	Retail Beef Yield %	Intra-Muscular Fat %
EBV	-5.2	+1.1	-1.2	+6.4	+5	+42	+65	+95	+92	+0.3	-0.5	+60	+2.4	-1.7	-2.2	+2.7	-0.6
Acc	41%	30%	50%	80%	50%	71%	73%	74%	62%	43%	28%	62%	47%	65%	65%	58%	54%

Purchaser: _____ \$ _____

LOT 44 WOODBOURN MISS CUPID S39 (PB)

Born: 21/03/2021 Colour: Silver Tattoo: 4W S39

MONTEREY MEGAFORCE (PB)
 MONTEREY HARMONY H62 (PB)
 MONTEREY SHOWGIRL E206 (PB)
Sire: AYR PARK MAJOR M55 (PB)
 THE GLEN BASS F104 (GR1)
 AYR PARK MATINA J30 (GR2)
 AYR PARK MATINA F80 (PB)
 WOODBOURN AMIGO D8 (PB)
 WOODBOURN KILN K51 (PB)
 WOODBOURN PEGGY Y15 (PB)
Dam: WOODBOURN MISS CUPID M59 (PB)
 MELALEUCA GHANDI G112 (PB)
 WOODBOURN MISS CUPID K8 (PB)
 WOODBOURN MISS CUPID Z86 (PB)

NOTES: A very good cow/calf unit. The cow is a soft silver in colour and is structurally very sound, with a good udder and free moving style. She has plenty of thickness, without being excessive and has very good carcass EBV's. In fact her rib and rump fats are in the top 1% of the breed and her calves are in the top 5%. This attractive female is doing a good job on her calf. Grey female calf at foot, Woodbourn Cupid V163, born 02/09/2024, tattoo: 4W24V163, sire: Onward Striker S43. Depastured with Woodbourn Sonic S16 from 15/10/2024 until 15/11/2024 and then Mount Major Roger R29 until 27/12/2024. PTIC

January 2025 Murray Grey BREEDPLAN

EBV	BIRTH				GROWTH					FERTILITY		CARCASE					
	Calving Ease Direct	Calving Ease Daughters	Gestation Length (days)	Birth Weight (kg)	Milk (kg)	200 - Day Wt (kg)	400 - Day Wt (kg)	600 - Day Wt (kg)	Mature Cow Wt (kg)	Scrotal Size (cm)	Days to Calving	Carcass Wt (kg)	EMA (sq cm)	Rib Fat (mm)	Rump Fat (mm)	Retail Beef Yield %	Intra-Muscular Fat %
EBV	+1.3	-0.6	-0.9	+3.1	+7	+26	+37	+53	+64	+0.3	-4.7	+36	+1.5	+2.3	+3.1	-0.5	+0.8
Acc	42%	29%	51%	80%	52%	73%	70%	73%	61%	38%	26%	60%	46%	64%	64%	57%	53%

Purchaser: _____ \$ _____



Lot 42 Woodbourn Miss Jeanette R30



Lot 43 Woodbourn Miss Jeanette S103



Lot 44 Woodbourn Miss Cupid S39

LOT 45 WOODBOURN GRETEL J61 (PB)

Born: 22/08/2013

Colour: Grey

Tattoo: 4W J61

KELSO YOGO Y13 (PB) (AI)
 KELSO CRACKER C17 (PB)
 LINDSAY DONNA Z13 (GR2)
Sire: WOODBOURN F18 HORNET (PB)
 WOODBOURN WARRIOR A69 (PB)
 WOODBOURN MISS ROSIE C95 (PB)
 WOODBOURN ROSIE A5 (PB)
 GLENLIAM FARM VALIANT V24 (PB)
 GLENLIAM FARM XCHANGE X97 (PB)
 GLENGARRET P246 (GR1)
Dam: WOODBOURN GRETEL A56 (PB)
 HILLSIDE MARS BAR (PB)
 WOODBOURN MISS GRETEL T55+98 (PB)
 WOODBOURN MISS GRETEL 835 (PB)

NOTES: A great breeder, who has had nine calves. A soft dappled grey with an outstanding calf at foot. This calf is a very appealing soft light grey in colour and has length, thickness and femininity. Both dam and calf have impressive EBV's with both in the top 5% of the breed for 400 and 600 day. Grey female calf at foot, Woodbourn Gretel V194, born 28/09/2024, tattoo: 4W24V194, sire Onward Sarge S18. Depastured with Woodbourn Trinidad T37 from 15/10/2024 until 15/11/2024 and then Woodbourn Rosevears R130 until 27/12/2024. PTIC

January 2025 Murray Grey BREEDPLAN

EBV	BIRTH				GROWTH				FERTILITY		CARCASE						
	Calving Ease Direct	Calving Ease Daughters	Gestation Length (days)	Birth Weight (kg)	Milk (kg)	200 - Day Wt (kg)	400 - Day Wt (kg)	600 - Day Wt (kg)	Mature Cow Wt (kg)	Scrotal Size (cm)	Days to Calving	Carcase Wt (kg)	EMA (sq cm)	Rib Fat (mm)	Rump Fat (mm)	Retail Beef Yield %	Intra-Muscular Fat %
EBV	-3.7	+1.2	-1.5	+5.7	+9	+37	+62	+88	+88	+0.1	-0.2	+54	+1.6	-1.1	-1.4	+1.5	-0.5
Acc	52%	41%	60%	86%	76%	80%	80%	79%	67%	41%	33%	70%	56%	71%	71%	65%	62%

Purchaser: _____ \$ _____

LOT 46 WOODBOURN JEANETTE H32 (PB)

Born: 22/03/2012

Colour: Grey

Tattoo: 4W H32

GNOLEDA ADVANCE (PB) (AI)
 GNOLEDA ZAC (PB)
 GNOLEDA TRUDY T32+98 (PB) (AI)
Sire: NAWARRA BANANA BENDER (PB)
 SABER MIRROOL (PB)
 SPRINGWELL BANANA T43 (PB)
 SPRINGWELL BANANA Q146 (PB)
 WILLALOOKA PHARAOH P47 (PB)
 WILTSHIRE XTRA SPECIAL (PB) (AI)
 WILTSHIRE ZINNIA T30 (PB)
Dam: WOODBOURN MISS JEANETTE B37 (PB)
 JYNDARRA WARRIOR W3 (PB) (AI)
 WOODBOURN MISS JEANETTE Z3 (PB)
 WOODBOURN MISS JEANETTE W59 (PB)

NOTES: Another of those wonderful old cows that has done so well for us. This light grey dappled cow and calf unit is as sound as a bell. A long thick feminine female. She has her tenth calf at foot and doing a very good job with it. Grey female calf at foot, Woodbourn Jeanette V115, born 10/08/24, tattoo: 4W24V115, sire Onward Striker S43. Depastured with Woodbourn Trinidad T37 from 21/10/2024 until 15/11/2024. Then Lindsay Tapioca T97 until 27/12/2024. PTIC

January 2025 Murray Grey BREEDPLAN

EBV	BIRTH				GROWTH				FERTILITY		CARCASE						
	Calving Ease Direct	Calving Ease Daughters	Gestation Length (days)	Birth Weight (kg)	Milk (kg)	200 - Day Wt (kg)	400 - Day Wt (kg)	600 - Day Wt (kg)	Mature Cow Wt (kg)	Scrotal Size (cm)	Days to Calving	Carcase Wt (kg)	EMA (sq cm)	Rib Fat (mm)	Rump Fat (mm)	Retail Beef Yield %	Intra-Muscular Fat %
EBV	+2.3	+2.3	-1.6	-0.4	+5	+11	+21	+25	+30	+0.2	-3.5	+20	+1.0	+1.3	+1.7	-0.5	+0.4
Acc	54%	42%	60%	86%	76%	81%	80%	80%	69%	44%	36%	70%	56%	71%	71%	65%	62%

Purchaser: _____ \$ _____



Woodbourn cows with bull calves at foot



Lot 45 Woodbourn Gretel J61



Lot 46 Woodbourn Jeanette H32

Note to Stud Breeders

Sires and Joining sires. Details listed for your convenience when registering calves.

Sire	Tattoo	SNP
Onward Sarge S18	SUE S18	1167689
Woodbourn Sonic S16	4W S16	1604819
Onward Striker S43	SUE S43	1167674
Kurani Stephen S10	OMG S10	1508598
Woodbourn Transformer T23	4W T23	1887106
Woodbourn Trinidad T37	4W T37	1887099
Ayr Park Nevada N31	WIN N31	82417039854
Woodbourn Stuttgart S96	4W S96	1604893
Cadfor Tungsten T121	HR1 T121	1911180

Mount Major Roger R29	DVD R29	1431047
Lindsay Tapioca T97	LSY T97	2013955
Woodbourn Rosevears R130	4W R130	1346744
Carlinga Napoleon	KYM N43	726382
Woodbourn Trueblue T66	4W T66	1887104
Woodbourn Transformer T23	4W T23	1887106
Bottlesford Sahara S11	KPN S11	1522521
Onward Nougat S44	SUE N44	779836
Woodbourn Sutton S44	4W S44	1604811
Woodbourn Trinidad T37	4W T37	1887099

11 Registered 'U' Heifers

LOT 47 WOODBOURN MISS JEANETTE U12 (PB)

Born: 01/03/2023 **Colour:** Silver **Tattoo:** 4W U12

RENNYLEA L743 (AA)
THE GLEN INTENSITY P250 (GR1)
THE GLEN CLARA L201

Sire: MOUNT MAJOR ROGER R29 (GR2)
THE GLEN NEW DESIGN X388 (GR1) (AI)
ROGIALYN TARELLA F9 (PB) (AI) (ET)
ROGIALYN TARELLA W1 (PB)
MELALEUCA GRID LOCK G15 (PB)
MELALEUCA KARL K231 (PB)

NOTES: We are offering a real keeper heifer here, by Roger. She is quite outstanding. As well as her exceptional figures, this heifer shows capacity, depth, length and softness. A most appealing, top heifer. Depastured with Woodbourn Umber U136 from 07/10/2024 until 20/12/2024. PTIC.

Dam: WOODBOURN MISS JEANETTE N131 (PB)
NAWARRA BANANA BENDER (PB)
WOODBOURN JEANETTE H117 (PB)
WOODBOURN MISS JEANETTE F19 (PB)

January 2025 Murray Grey BREEDPLAN

EBV	BIRTH				GROWTH					FERTILITY		CARCASE					
	Calving Ease Direct	Calving Ease Daughters	Gestation Length (days)	Birth Weight (kg)	Milk (kg)	200 - Day Wt (kg)	400 - Day Wt (kg)	600 - Day Wt (kg)	Mature Cow Wt (kg)	Scrotal Size (cm)	Days to Calving	Carcase Wt (kg)	EMA (sq cm)	Rib Fat (mm)	Rump Fat (mm)	Retail Beef Yield %	Intra-Muscular Fat %
EBV	+2.0	-1.1	-2.4	+2.0	+3	+21	+43	+61	+62	+0.2	-2.2	+40	+2.7	+0.2	+0.5	+0.9	+1.0
Acc	35%	26%	47%	76%	39%	66%	68%	69%	57%	33%	25%	58%	45%	63%	62%	56%	51%

Purchaser: _____ \$ _____

LOT 48 WOODBOURN MISS MAGNOLIA U38 (PB)

Born: 13/03/2023 **Colour:** Silver **Tattoo:** 4W U38

MELALEUCA DEVIL D23 (PB)
MELALEUCA GRID LOCK G15 (PB)
MELALEUCA ESBAY D195 (PB)

Sire: MELALEUCA KARL K231 (PB)
MELALEUCA EWEN E55 (PB)
MELALEUCA DAIYA H77 (PB)
MELALEUCA DAIYA C167 (PB)
WATERMILL YEO (PB) (AI)
WATERMILL DRIFTER D44 (PB)
PARKNOOK FIONA 201 (PB)

NOTES: All class with this big upstanding female. She is very feminine and worthy of her position at Lot 49. Depastured with Woodbourn Umber U136 from 07/10/2024 until 20/12/2024. PTIC.

Dam: STEELE RUDD MISS MAGNOLIA J5 (PB)
MONTEREY SUNDOWNER+97 (PB)
EYLWARRA SANDS MISS MAGNOLIA Z92 (PB)
MONTEREY MISS MAGNOLIA 3RD (PB)

January 2025 Murray Grey BREEDPLAN

EBV	BIRTH				GROWTH					FERTILITY		CARCASE					
	Calving Ease Direct	Calving Ease Daughters	Gestation Length (days)	Birth Weight (kg)	Milk (kg)	200 - Day Wt (kg)	400 - Day Wt (kg)	600 - Day Wt (kg)	Mature Cow Wt (kg)	Scrotal Size (cm)	Days to Calving	Carcase Wt (kg)	EMA (sq cm)	Rib Fat (mm)	Rump Fat (mm)	Retail Beef Yield %	Intra-Muscular Fat %
EBV	+0.4	-1.2	-1.5	+3.0	+7	+21	+37	+37	+32	+0.4	-3.8	+25	+0.9	+1.5	+2.0	-0.5	+0.5
Acc	47%	39%	56%	79%	55%	70%	71%	72%	62%	50%	32%	62%	49%	65%	65%	59%	55%

Purchaser: _____ \$ _____

LOT 49 WOODBOURN MISS BARBARA U36 (PB)

Born: 11/03/2023 **Colour:** Silver **Tattoo:** 4W U36

MELALEUCA DEVIL D23 (PB)
MELALEUCA GRID LOCK G15 (PB)
MELALEUCA ESBAY D195 (PB)

Sire: MELALEUCA KARL K231 (PB)
MELALEUCA EWEN E55 (PB)
MELALEUCA DAIYA H77 (PB)
MELALEUCA DAIYA C167 (PB)
MONTEREY COUGAR C72 (PB)
MELALEUCA GHANDI G112 (PB)
MELALEUCA MINNOW Z95 (PB)

NOTES: An absolutely superb young female. Femininity, depth and thickness are all in the package. When you view her figures as well, this is certainly an all round valuable package. I suggest you take the time to look at her figures. Depastured with Woodbourn Umber U136 from 07/10/2024 until 15/11/2024 then Woodbourn Usher U101 until 20/12/2024. PTIC.

Dam: WOODBOURN MISS BARBARA L36 (PB)
ONWARD SAM (PB)
BIG PARK BARBARA H9 (PB)
WOODBOURN MISS Y BARBARA C106 (PB)

January 2025 Murray Grey BREEDPLAN

EBV	BIRTH				GROWTH					FERTILITY		CARCASE					
	Calving Ease Direct	Calving Ease Daughters	Gestation Length (days)	Birth Weight (kg)	Milk (kg)	200 - Day Wt (kg)	400 - Day Wt (kg)	600 - Day Wt (kg)	Mature Cow Wt (kg)	Scrotal Size (cm)	Days to Calving	Carcase Wt (kg)	EMA (sq cm)	Rib Fat (mm)	Rump Fat (mm)	Retail Beef Yield %	Intra-Muscular Fat %
EBV	+0.5	-3.2	-1.1	+4.0	+4	+26	+42	+59	+53	+1.2	-4.3	+36	+1.5	+0.4	+0.6	+0.7	+0.0
Acc	49%	42%	59%	79%	58%	71%	73%	74%	65%	54%	35%	65%	54%	68%	68%	62%	59%

Purchaser: _____ \$ _____

LOT 50 WOODBOURN MISS BARBARA U48 (PB)

Born: 26/03/2023 **Colour:** Silver **Tattoo:** 4W U48

THE GLEN BASS H018 (GR2)
BURNETT DOWNS KENWORTH K13 (PB)
BURNETT DOWNS WILMA E28 (PB)

Sire: ONWARD NOUGAT (PB)
KELSO BABALON B15 (PB)
ONWARD DEBBIE F46 (PB)
ONWARD DEBBIE 7TH (PB)
ONWARD MANUKA (PB) (AI)
ONWARD SAM (PB)
ONDIONG SALLY 29TH (PB)

NOTES: A beautiful, dark silver, feminine female with capacity and shape. A real quality, soft, appealing heifer. An exceptional range of figures. Depastured with Woodbourn Usain U72 from 07/10/2024 until 15/11/2024 and then Woodbourn Umber U136 until 20/12/2024. PTIC.

Dam: BIG PARK BARBARA H9 (PB)
BUNDALEER X ROAD X37 (PB)
WOODBOURN MISS Y BARBARA C106 (PB)
YAMBA BARBARA T30 (PB) (AI)

January 2025 Murray Grey BREEDPLAN

EBV	BIRTH				GROWTH					FERTILITY		CARCASE					
	Calving Ease Direct	Calving Ease Daughters	Gestation Length (days)	Birth Weight (kg)	Milk (kg)	200 - Day Wt (kg)	400 - Day Wt (kg)	600 - Day Wt (kg)	Mature Cow Wt (kg)	Scrotal Size (cm)	Days to Calving	Carcase Wt (kg)	EMA (sq cm)	Rib Fat (mm)	Rump Fat (mm)	Retail Beef Yield %	Intra-Muscular Fat %
EBV	+0.2	-0.3	-1.6	+2.9	+5	+29	+42	+65	+67	+0.2	-1.4	+43	+2.0	+0.2	+0.4	+0.8	+0.3
Acc	41%	31%	50%	79%	48%	71%	71%	72%	61%	45%	28%	61%	47%	63%	63%	57%	53%

Purchaser: _____ \$ _____



Lot 47 Woodbourn Miss Jeanette U12



Lot 48 Woodbourn Miss Magnolia U38



Lot 49 Woodbourn Miss Barbara U36



Lot 50 Woodbourn Miss Barbara U48

LOT 51 WOODBOURN MISS HEATHER U21 (PB)

Born: 03/03/2023 Colour: Silver Tattoo: 4W U21

RENNYLEA L743 (AA)
THE GLEN INTENSITY P250 (GR1)
THE GLEN CLARA L201

Sire: MOUNT MAJOR ROGER R29 (GR2)

THE GLEN NEW DESIGN X388 (GR1) (AI)
ROGIALYN TARELLA F9 (PB) (AI) (ET)
ROGIALYN TARELLA W1 (PB)
WOODBOURN CHANOOKA D84 (PB)
YAMBA HORTINESS (PB)
YAMBA SUSAN E62 (PB) (AI)

NOTES: Only one of two heifers by Roger being offered. This beautiful female will go on to be a great breeder. Good moderate size with all the qualities you would want. Depastured with Woodbourn Umber U136 from 07/10/2024 until 15/11/2024 then Woodbourn Usher U101 until 20/12/2024. PTIC.

Dam: WOODBOURN MISS HEATHER L45 (PB)

WILTSHIRE XTRA SPECIAL (PB) (AI)
WOODBOURN MISS HEATHER B16 (PB)
WOODBOURN HEATHER Y67 (PB)

January 2025 Murray Grey BREEDPLAN

EBV	BIRTH				GROWTH				FERTILITY		CARCASE						
	Calving Ease Direct	Calving Ease Daughters	Gestation Length (days)	Birth Weight (kg)	Milk (kg)	200 - Day Wt (kg)	400 - Day Wt (kg)	600 - Day Wt (kg)	Mature Cow Wt (kg)	Scrotal Size (cm)	Days to Calving	Carcase Wt (kg)	EMA (sq cm)	Rib Fat (mm)	Rump Fat (mm)	Retail Beef Yield %	Intra-Muscular Fat %
-0.8	-0.8	-0.8	+2.4	+3	+18	+30	+43	+42	+0.2		+29	+2.6	-0.9	-1.0	+1.7	+0.5	
Acc	34%		40%	63%	40%	62%	67%	68%	57%	30%		57%	38%	48%	48%	44%	41%

Purchaser: _____ \$ _____

LOT 52 WOODBOURN MISS SALLY U82 (PB)

Born: 02/08/2023 Colour: Silver Tattoo: 4W U82

THE GLEN BASS F104 (GR1)
AYR PARK HUGH H77 (GR2)
AYR PARK TRIAL & ERROR F92 (PB)

Sire: AYR PARK NEVADA N31 (PB)

WILLALOOKA YORK Y96 (PB) (AI)
AYR PARK KATRINA C50 (PB) (AI)
AYR PARK KATRINA S1+97 (PB) (AI)
MELALEUCA ARTILLARY A16 (PB)
WOODBOURN GALAXY G107 (PB)
WOODBOURN PEGGY T42+98 (PB)

NOTES: A good all round, free moving female with a well balanced line of figures to add to her appeal. A very feminine heifer with length, outlook and smoothness. Depastured with Woodbourn Umber U136 from 07/10/2024 until 15/11/2024 then Woodbourn Usher U101 until 20/12/2024. PTIC.

Dam: WOODBOURN MISS SALLY K68 (PB)

WOODBOURN RAMBO (PB)
WOODBOURN MISS SALLY X15 (PB)
WOODBOURN SALLY 770 (PB)

January 2025 Murray Grey BREEDPLAN

EBV	BIRTH				GROWTH				FERTILITY		CARCASE						
	Calving Ease Direct	Calving Ease Daughters	Gestation Length (days)	Birth Weight (kg)	Milk (kg)	200 - Day Wt (kg)	400 - Day Wt (kg)	600 - Day Wt (kg)	Mature Cow Wt (kg)	Scrotal Size (cm)	Days to Calving	Carcase Wt (kg)	EMA (sq cm)	Rib Fat (mm)	Rump Fat (mm)	Retail Beef Yield %	Intra-Muscular Fat %
-0.5	+0.5	-0.8	+2.9	+7	+23	+40	+56	+61	+0.5	-3.8	+36	+1.2	+0.2	+0.2	+0.2	+0.6	
Acc	40%	32%	50%	78%	46%	71%	71%	71%	59%	44%	28%	61%	48%	65%	64%	58%	53%

Purchaser: _____ \$ _____

LOT 53 WOODBOURN MISS HEATHER U52 (PB)

Born: 01/04/2023 Colour: Silver Tattoo: 4W U52

THE GLEN BASS H018 (GR2)
BURNETT DOWNS KENWORTH K13 (PB)
BURNETT DOWNS WILMA E28 (PB)

Sire: ONWARD NOUGAT (PB)

KELSO BABALON B15 (PB)
ONWARD DEBBIE F46 (PB)
ONWARD DEBBIE 7TH (PB)
MELALEUCA ECUADOR E267 (PB)
MELALEUCA JACKHAMMER J115 (PB)
MELALEUCA ESMERELDA E58 (PB)

NOTES: A lovely soft feminine female, with capacity and thickness. Absolutely exceptional figures across the board. Her calving ease and gestation length are ideal and please note her birth weight and fats. Depastured with Woodbourn Usain U72 from 07/10/2024 until 15/11/2024 then Woodbourn Umber U136 until 20/12/2024. PTIC.

Dam: WOODBOURN MISS HEATHER M31 (PB)

NAWARRA BANANA BENDER (PB)
WOODBOURN MISS HEATHER H3 (PB)
WOODBOURN MISS HEATHER A12 (PB)

January 2025 Murray Grey BREEDPLAN

EBV	BIRTH				GROWTH				FERTILITY		CARCASE						
	Calving Ease Direct	Calving Ease Daughters	Gestation Length (days)	Birth Weight (kg)	Milk (kg)	200 - Day Wt (kg)	400 - Day Wt (kg)	600 - Day Wt (kg)	Mature Cow Wt (kg)	Scrotal Size (cm)	Days to Calving	Carcase Wt (kg)	EMA (sq cm)	Rib Fat (mm)	Rump Fat (mm)	Retail Beef Yield %	Intra-Muscular Fat %
+0.3	+0.5	-2.1	+2.8	+5	+26	+40	+62	+65	+0.1	-3.8	+40	+2.6	+1.6	+2.4	+0.3	+0.3	
Acc	39%	28%	49%	78%	47%	70%	70%	71%	60%	44%	27%	60%	47%	63%	63%	56%	53%

Purchaser: _____ \$ _____

LOT 54 WOODBOURN MISS PASQUALE U147 (PB)

Born: 23/08/2023 Colour: Silver Tattoo: 4W U147

GLENLIAM FARM LOGISTIC L90 (PB) (ET)
ONDIONG BARTLET P8 (PB)
ONDIONG BEROLEANE 47 (PB)

Sire: ONDIONG 2F R107 (PB)

BAROONA PARK TUDOR (PB) (AI)
ONDIONG DEBBIE 143RD (PB)
ONDIONG DEBBIE 124TH (PB)
YAMBA HORTINESS (PB)
WOODBOURN LUTHER L40 (PB)
WOODBOURN SALLY A42 (PB)

NOTES: This is a very young heifer by Ondiong 2F R107. She is the youngest in the group, but is all quality. Depastured with Woodbourn Umber U136 from 07/10/2024 until 15/11/2024 then Woodbourn Usher U101 until 20/12/2024. PTIC.

Dam: WOODBOURN PASQUALE P147 (PB)

THOLOGOLONG YALLANGATTA Y3 (PB)
BIG PARK PASQUALE D16 (PB)
BIG PARK PASCALE X7 (PB)

January 2025 Murray Grey BREEDPLAN

EBV	BIRTH				GROWTH				FERTILITY		CARCASE						
	Calving Ease Direct	Calving Ease Daughters	Gestation Length (days)	Birth Weight (kg)	Milk (kg)	200 - Day Wt (kg)	400 - Day Wt (kg)	600 - Day Wt (kg)	Mature Cow Wt (kg)	Scrotal Size (cm)	Days to Calving	Carcase Wt (kg)	EMA (sq cm)	Rib Fat (mm)	Rump Fat (mm)	Retail Beef Yield %	Intra-Muscular Fat %
-1.9	-0.2	-0.2	+5.2	+4	+30	+46	+62	+65	+0.8		+41	+1.9	+0.0	-0.1	+1.0	+0.0	
Acc	33%		45%	77%	39%	69%	69%	70%	58%	25%		58%	42%	62%	62%	54%	49%

Purchaser: _____ \$ _____



Lot 51 Woodbourn Miss Heather U21



Lot 52 Woodbourn Miss Sally U82



Lot 53 Woodbourn Miss Heather U52



Lot 54 Woodbourn Miss Pasquale U147

LOT 55 WOODBOURN SALLY U139 (PB)

Born: 18/08/2023 Colour: Grey Tattoo: 4W U139

BURNETT DOWNS KENWORTH K13 (PB)
ONWARD NOUGAT (PB)
ONWARD DEBBIE F46 (PB)

Sire: WOODBOURN SONIC S16 (PB)

KELSO CRACKER C17 (PB)
WOODBOURN BARBARA M141 (PB)
WOODBOURN BARBARA A49 (PB)
MONTEREY HARMONY H62 (PB)
AYR PARK MAJOR M55 (PB)
AYR PARK MATINA J30 (GR2)

Dam: WOODBOURN MISS SALLY R56 (PB)

MELALEUCA ARTILLARY A16 (PB)
WOODBOURN MISS SALLY F10 (PB)
WOODBOURN SALLY A42 (PB)

NOTES: A real quality heifer with an appealing grey coloured coat. A very pretty feminine female. By the keeper bull, Woodbourn Sonic S16, you don't get any better numbers than this. Those looking for softness in their cattle, would certainly need to look here. Depastured with Woodbourn Usher U136 from 07/10/2024 until 15/11/2024 then Woodbourn Usher U101 until 20/12/2024. PTIC.

January 2025 Murray Grey BREEDPLAN

EBV	BIRTH				GROWTH				FERTILITY		CARCASE						
	Calving Ease Direct	Calving Ease Daughters	Gestation Length (days)	Birth Weight (kg)	Milk (kg)	200 - Day Wt (kg)	400 - Day Wt (kg)	600 - Day Wt (kg)	Mature Cow Wt (kg)	Scrotal Size (cm)	Days to Calving	Carcase Wt (kg)	EMA (sq cm)	Rib Fat (mm)	Rump Fat (mm)	Retail Beef Yield %	Intra-Muscular Fat %
+1.0			-1.6	+3.2	+7	+29	+48	+70	+77	-0.1		+46	+1.9	+1.4	+2.0	-0.3	+0.9
Acc	35%		46%	77%	38%	69%	69%	70%	58%	33%		58%	44%	62%	62%	55%	50%

Purchaser: _____ \$ _____

LOT 56 WOODBOURN MISS BARBARA U104 (PB)

Born: 09/08/2023 Colour: Silver Tattoo: 4W U104

GLENLIAM FARM LOGISTIC L90 (PB) (ET)
ONDIONG BARTLET P8 (PB)
ONDIONG BEROLEANE 47 (PB)

Sire: ONDIONG 2F R107 (PB)

BAROONA PARK TUDOR (PB) (AI)
ONDIONG DEBBIE 143RD (PB)
ONDIONG DEBBIE 124TH (PB)
CAM GROVE XMAN C14 (PB)
CAM GROVE XMAN K33 (PB)
CAM GROVE GRETEL F1 (PB)

Dam: WOODBOURN BARBARA M71 (PB)

WOODBOURN GALAXY G107 (PB)
WOODBOURN BARBARA K82 (PB)
WOODBOURN MISS BARBARA E41 (PB)

NOTES: A lovely all round breeder type, with smoothness, length and thickness. So soft and feminine. Would certainly be an asset in most herds. Depastured with Woodbourn Usher U101 from 07/10/2024 until 15/11/2024 and then Mount Major Ulysses U33 until 20/12/2024. PTIC

January 2025 Murray Grey BREEDPLAN

EBV	BIRTH				GROWTH				FERTILITY		CARCASE						
	Calving Ease Direct	Calving Ease Daughters	Gestation Length (days)	Birth Weight (kg)	Milk (kg)	200 - Day Wt (kg)	400 - Day Wt (kg)	600 - Day Wt (kg)	Mature Cow Wt (kg)	Scrotal Size (cm)	Days to Calving	Carcase Wt (kg)	EMA (sq cm)	Rib Fat (mm)	Rump Fat (mm)	Retail Beef Yield %	Intra-Muscular Fat %
+0.6			-0.6	+2.7	+5	+22	+33	+50	+57	+0.4		+37	+2.7	+0.3	+0.5	+1.4	-0.1
Acc	32%		45%	77%	40%	69%	69%	70%	58%	29%		58%	43%	62%	62%	54%	49%

Purchaser: _____ \$ _____

LOT 57 WOODBOURN MISS YAMBA U112 (PB)

Born: 11/08/2023 Colour: Silver Tattoo: 4W U112

MONTEREY HARMONY H62 (PB)
AYR PARK MAJOR M55 (PB)
AYR PARK MATINA J30 (GR2)

Sire: WOODBOURN SUTTON S44 (PB)

AYR PARK HUGH H77 (GR2)
WOODBOURN MISS VITELLO N99 (PB)
BIG PARK VITELLO D22 (PB)
MELALEUCA GRID LOCK G15 (PB)
MELALEUCA KARL K231 (PB)
MELALEUCA DAIYA H77 (PB)

Dam: WOODBOURN MISS YAMBA S18 (PB)

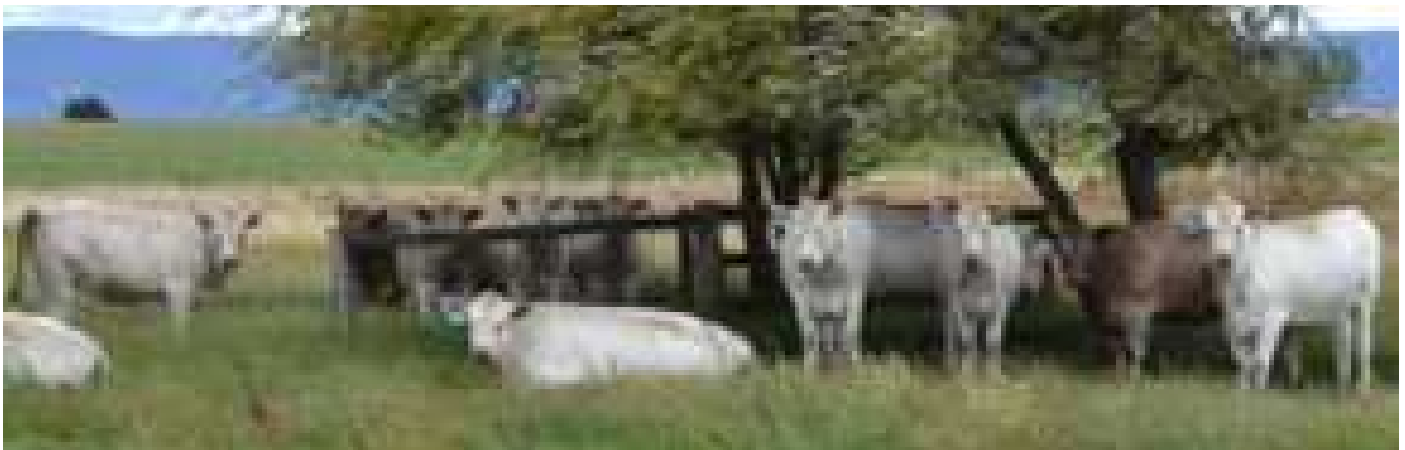
MELALEUCA GHANDI G112 (PB)
WOODBOURN MISS YAMBA K41 (GR2)
YAMBA V235+00 (GR1)

NOTES: A real quality heifer with softness, femininity and depth. Again, a good all round breeder type. Depastured with Woodbourn Usher U101 from 07/10/2024 until 15/11/2024 and then Mount Major Ulysses U33 until 20/12/2024. PTIC

January 2025 Murray Grey BREEDPLAN

EBV	BIRTH				GROWTH				FERTILITY		CARCASE						
	Calving Ease Direct	Calving Ease Daughters	Gestation Length (days)	Birth Weight (kg)	Milk (kg)	200 - Day Wt (kg)	400 - Day Wt (kg)	600 - Day Wt (kg)	Mature Cow Wt (kg)	Scrotal Size (cm)	Days to Calving	Carcase Wt (kg)	EMA (sq cm)	Rib Fat (mm)	Rump Fat (mm)	Retail Beef Yield %	Intra-Muscular Fat %
+2.8	-1.1		-1.2	+2.6	+8	+24	+42	+56	+60	+0.2	-3.6	+39	+1.7	+1.2	+1.7	+0.1	+0.6
Acc	36%	28%	48%	77%	39%	69%	69%	70%	59%	36%	25%	59%	45%	63%	63%	56%	51%

Purchaser: _____ \$ _____



Woodbourn 'U' heifers



Lot 55 Woodbourn Sally U139



Lot 56 Woodbourn Miss Barbara U104



Lot 57 Woodbourn Miss Yamba U112

IN MEMORIAM
Barry and Jan Wright

It was with great sadness that we learned of Jan Wright's death on Sunday 9th February. Many of you would have enjoyed seeing Jan's cheerful face at the Woodbourn sale, where she could be seen cooking the best medium steaks for lunch. We will miss her happy face and great help, just as we missed her husband Barry, who died some years ago. He was with us here for many many years and his cattle expertise was invaluable in the development of the Woodbourn Murray Grey enterprise.

9 Commercial Heifers

Lot 58: Group of three commercial 'U' heifers

Depastured from 07/10/24 until 20/12/2024. PTIC

Purchaser..... \$.....

Lot 59: Group of three commercial 'U' heifers PTIC

Depastured from 07/10/24 until 20/12/2024. PTIC

Purchaser..... \$.....

Lot 60: Group of three commercial 'U' heifers PTIC

Depastured from 07/10/24 until 20/12/2024. PTIC

Purchaser..... \$.....



Woodbourn commercial 'U' heifers



Woodbourn 'U' heifers with Mount Major Ulysses U33

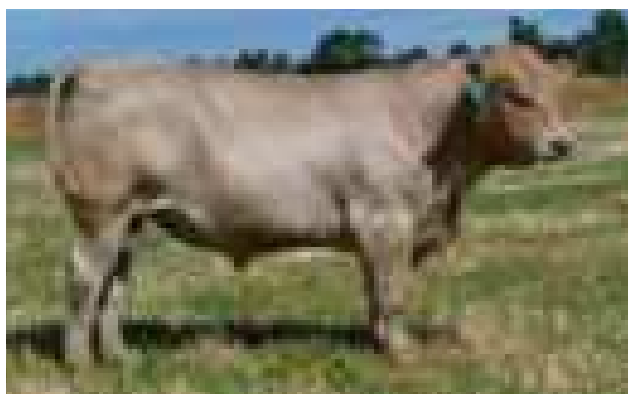
Joining Sires

WOODBOURN USHER U101 - DETAILS LOT 1 THIS CATALOGUE

NOTES: As you can see, this pen is where we placed our young joining sires, who joined our heifers in the spring. These three bulls did a remarkable job as we had the highest pregnancy rate in our heifers that we have ever had. We thoroughly recommend these three bulls to you, as they were selected as juniors back in October and they were standouts then. This Lot 1 is a particular favourite as he is out of a bought in cow to provide an outcross. Please note his outstanding figures. We would be happy to recommend this bull for a self replacing herd.



WOODBOURN USAIN U72 - DETAILS LOT 2 THIS CATALOGUE



NOTES: One of our yearling joining sires, this excellent bull is very long with a lovely head and great outlook. He was chosen to use over our heifers because of his style and appeal but also because of his smoothness. An excellent young bull.

WOODBOURN UMBER U136 - DETAILS LOT 3 THIS CATALOGUE



NOTES: Like his mates in Pen One, this young bull was used over heifers in the spring. This smooth, upstanding young bull certainly did the job for us. Like his mates, he is down in condition, but that's what we breed them for: to work. A wonderful spread of figures with exceptional milk and fats; ideal for a self replacing herd.

MOUNT MAJOR ULYSSES U33

Born: 16/08/2023 **Colour:** Grey **Tattoo:** DVD U33

Sire: BOTTLESFORD MOCHA M58 **Dam:** MOUNT MAJOR JOSIE N19

NOTES: Purchased as a yearling, Mount Major Ulysses has great appeal and is by Bottleford Mocha, well known in the breed for his carcase. Well grown for his age and showing great shape and flair. His figures are outstanding. Ulysses arrived home just in time to join heifers in the spring and we have high hopes for the resulting progeny.



January 2025 Murray Grey BREEDPLAN

BIRTH	BIRTH									BREEDPLAN							
	Calving Ease Direct	Calving Ease Daughters	Gestation Length (days)	Birth Weight (kg)	Milk (kg)	200 - Day Wt (kg)	400 - Day Wt (kg)	600 - Day Wt (kg)	Mature Cow Wt (kg)	Scrotal Size (cm)	Days to Calving	Carcase Wt (kg)	EMA (sq cm)	Rib Fat (mm)	Rump Fat (mm)	Retail Beef Yield %	Intra-Muscular Fat %
EBV	+0.4	+3.0	-1.1	+4.7	+6	+37	+65	+89	+93	+0.5	-1.3	+62	+3.1	-0.2	-0.2	+1.2	+0.7
Acc	39%	30%	60%	67%	52%	69%	70%	67%	58%	52%	28%	61%	53%	61%	61%	58%	52%

Reference and Joining Sires

AYR PARK NEVADA N31 (PB)

Born: 17/07/2017

Colour: Silver

Tattoo: WIN N31

CUDGEGONG PARK BASS (GR1)
THE GLEN BASS F104 (GR1)
THE GLEN OPAL Z146 (GR2)

Sire: AYR PARK HUGH H77 (GR2)

WOODBOURN X87 (PB)
AYR PARK TRIAL & ERROR F92 (PB)
JYNDARRA TRIAL & ERROR Y4 (PB)
WILLALOOKA THUG (PB)
WILLALOOKA YORK Y96 (PB) (AI)
WILLALOOKA CLEMATIS U206 (PB)

Dam: AYR PARK KATRINA C50 (PB) (AI)

ORCADIA PARK REMBRANDT (PB)
AYR PARK KATRINA S1+97 (PB) (AI)
TROYAARON POSCH P2+94 (PB)

NOTES: Ayr Park Nevada is a very big impressive sire with figures to go with it. Lovely dark silver colour and very very quiet. His feet are excellent. From his calving ease and gestation length, his low birth and high growth, right through to his IMF, his figures are exceptional, except a slightly lower EMA.

January 2025 Murray Grey BREEDPLAN

	BIRTH			GROWTH				FERTILITY			CARCASE						
	Calving Ease Direct	Calving Ease Daughters	Gestation Length (days)	Birth Weight (kg)	Milk (kg)	200 - Day Wt (kg)	400 - Day Wt (kg)	600 - Day Wt (kg)	Mature Cow Wt (kg)	Scrotal Size (cm)	Days to Calving	Carcase Wt (kg)	EMA (sq cm)	Rib Fat (mm)	Rump Fat (mm)	Retail Beef Yield %	Intra-Muscular Fat %
EBV	+0.9	+0.5	-1.1	+3.8	+10	+28	+47	+72	+82	+0.9	-5.6	+4.1	-0.2	+0.8	+1.2	-0.8	+1.1
Acc	60%	47%	68%	94%	58%	87%	88%	87%	75%	74%	39%	76%	63%	73%	72%	69%	63%

Purchaser: _____ \$ _____

MOUNT MAJOR QUANTUM Q1 (PB)

Born: 27/07/2019

Colour: Grey

Tattoo: DVD Q1

TUMHARETOA REGENT D145 (AA) (GR0)
ROGIALYN JUPITER (GR1) (AI)
ROGIALYN FREDERIKA F4 (PB) (AI)

Sire: ROGIALYN JUPITER N13 (GR2)

THE GLEN NEW DESIGN X388 (GR1) (AI)
ROGIALYN TARELLA F9 (PB) (AI) (ET)
ROGIALYN TARELLA W1 (PB)
CADFOR DESTINY D71 (PB)
MOUNT MAJOR KINGSWOOD K6 (PB) (AI)
MOUNT MAJOR JOSIE H11 (PB)

Dam: MOUNT MAJOR DELVENE N8 (PB) (AI)

THE GLEN BASS F226 (GR1)
MOUNT MAJOR DELVENE K4 (GR2) (AI)
MOUNT MAJOR DELVENE (PB) (AI)

NOTES: Mount Major Quantum Q1 was purchased in 2020. He is a very stylish, well grown bull, who we had very high hopes for. He is structurally very correct. His figures are exceptional, with his 400 and 600 day growth in the top 1% for the breed, a great EMA, and huge IMF, also in the top 1% for the breed.

January 2025 Murray Grey BREEDPLAN

	BIRTH			GROWTH				FERTILITY			CARCASE						
	Calving Ease Direct	Calving Ease Daughters	Gestation Length (days)	Birth Weight (kg)	Milk (kg)	200 - Day Wt (kg)	400 - Day Wt (kg)	600 - Day Wt (kg)	Mature Cow Wt (kg)	Scrotal Size (cm)	Days to Calving	Carcase Wt (kg)	EMA (sq cm)	Rib Fat (mm)	Rump Fat (mm)	Retail Beef Yield %	Intra-Muscular Fat %
EBV	-3.3	+1.0	-2.5	+4.7	+3	+34	+65	+97	+113	+0.0	-0.9	+59	+2.2	+0.0	+0.1	+0.4	+1.9
Acc	59%	40%	66%	94%	56%	89%	90%	90%	77%	77%	38%	78%	65%	77%	73%	69%	69%

Purchaser: _____ \$ _____

MELALEUCA KARL K231 (PB)

Born: 10/03/2014

Colour: Silver

Tattoo: MCA K231

SPRINGWELL ZAPPA Z33 (PB)
MELALEUCA DEVIL D23 (PB)
MELALEUCA ESMERELDA Z28 (PB)

Sire: MELALEUCA GRID LOCK G15 (PB)

MONTEREY UNIT-HOLDER Y45 (PB)
MELALEUCA ESBAY D195 (PB)
MELALEUCA ESBAY W43 (PB)
MELALEUCA ALBY A211 (PB)
MELALEUCA EWEN E55 (PB)
MELALEUCA ROSEMARY B55 (PB)

Dam: MELALEUCA DAIYA H77 (PB)

MELALEUCA CHARLES Z67 (PB)
MELALEUCA DAIYA C167 (PB)
MELALEUCA DAIYA A215 (PB)

NOTES: Melaleuca Karl K231 has been an exceptional sire here at Woodbourn. A very influential sire who remained sound for a great number of years. Both his male and female progeny are easily recognisable, he puts such a stamp on them. He has maintained a low birth weight through the years and his calving ease and gestation length are ideal for ease of calving as well. He has been a great asset for us here at Woodbourn.

January 2025 Murray Grey BREEDPLAN

	BIRTH			GROWTH				FERTILITY			CARCASE						
	Calving Ease Direct	Calving Ease Daughters	Gestation Length (days)	Birth Weight (kg)	Milk (kg)	200 - Day Wt (kg)	400 - Day Wt (kg)	600 - Day Wt (kg)	Mature Cow Wt (kg)	Scrotal Size (cm)	Days to Calving	Carcase Wt (kg)	EMA (sq cm)	Rib Fat (mm)	Rump Fat (mm)	Retail Beef Yield %	Intra-Muscular Fat %
EBV	+3.7	-2.6	-2.4	+2.6	+5	+23	+40	+55	+46	+0.7	-4.2	+35	+1.6	+0.9	+1.1	+0.2	+0.7
Acc	79%	68%	91%	98%	91%	96%	96%	96%	91%	90%	52%	89%	79%	88%	88%	85%	82%

Purchaser: _____ \$ _____

MOUNT MAJOR ROGER R29 (GR2)

Born: 20/08/2020

Colour: Grey

Tattoo: DVD R29

RENNYLEA L743 (AA)
THE GLEN CLARA L201

Sire: THE GLEN INTENSITY P250 (GR1)

B/R NEW DESIGN 036 (AA) (GR0)
THE GLEN NEW DESIGN X388 (GR1) (AI)
THE GLEN BIR R286 (PB)

Dam: ROGIALYN TARELLA F9 (PB) (AI) (ET)

LINDSAY STARBRIGHT S117+97 (PB) (AI)
ROGIALYN TARELLA W1 (PB)
LINDSAY TARELLA T028+98 (PB) (AI)

NOTES: A magnificent, powerful bull with great charisma and with figures to match. He is off the charts with his EMA and IMF and his fats are excellent as well. This bull's growth figures, 400 and 600 day, are in the top 5% of the breed. He is a very exciting bull..

January 2025 Murray Grey BREEDPLAN

	BIRTH			GROWTH				FERTILITY			CARCASE						
	Calving Ease Direct	Calving Ease Daughters	Gestation Length (days)	Birth Weight (kg)	Milk (kg)	200 - Day Wt (kg)	400 - Day Wt (kg)	600 - Day Wt (kg)	Mature Cow Wt (kg)	Scrotal Size (cm)	Days to Calving	Carcase Wt (kg)	EMA (sq cm)	Rib Fat (mm)	Rump Fat (mm)	Retail Beef Yield %	Intra-Muscular Fat %
EBV	-1.8	-1.3	-1.5	+4.3	+6	+29	+60	+83	+77	+0.0	+0.1	+53	+4.5	-0.8	-0.8	+2.3	+1.4
Acc	45%	31%	56%	86%	45%	78%	80%	79%	67%	36%	28%	68%	54%	66%	66%	61%	55%

Purchaser: _____ \$ _____

CADFOR TUNGSTEN T121 (PB)

Born: 03/08/2022

Colour: Silver

Tattoo: HR1 T121

WILLALOOKA UNITY U99 (PB)
WILLALOOKA ARTHUR A598 (PB)
WILLALOOKA V813 (PB)

Sire: CADFOR DESTINY D71 (PB)

WILLALOOKA UNCLE BEN U174 (PB)
WILLALOOKA V997 (PB)
WILLALOOKA V884 (PB)
EYLWARRA SANDS FALCON F33 (PB)
N2 (PB) (ET)
CADFOR BEROLEANNE D138 (PB)

Dam: CADFOR BOBO Q8 (PB)

CARLINGA GUIDED MISSILE (PB)
CARLINGA BOBO L61 (PB)
ONDIONG BOBO 59TH (PB)

NOTES: Things certainly went our way when we were able to buy Cadfor Tungsten T121. He is an exciting bull. He is very correct, has great flair and is an appealing dark silver colour. You do not get much better than his carcass EBV's and to match this, he has low birth and high growth. We are very much looking forward to seeing his progeny.

January 2025 Murray Grey BREEDPLAN

	BIRTH			GROWTH				FERTILITY			CARCASE						
	Calving Ease Direct	Calving Ease Daughters	Gestation Length (days)	Birth Weight (kg)	Milk (kg)	200 - Day Wt (kg)	400 - Day Wt (kg)	600 - Day Wt (kg)	Mature Cow Wt (kg)	Scrotal Size (cm)	Days to Calving	Carcase Wt (kg)	EMA (sq cm)	Rib Fat (mm)	Rump Fat (mm)	Retail Beef Yield %	Intra-Muscular Fat %
EBV	-0.4	+4.7	-2.3	+2.9	+1	+31	+53	+77	+87	+2.5	-3.2	+54	+2.8	+0.2	+0.3	+1.0	+0.7
Acc	45%	38%	54%	78%	54%	71%	70%	72%	63%	71%	34%	62%	53%	62%	62%	58%	52%

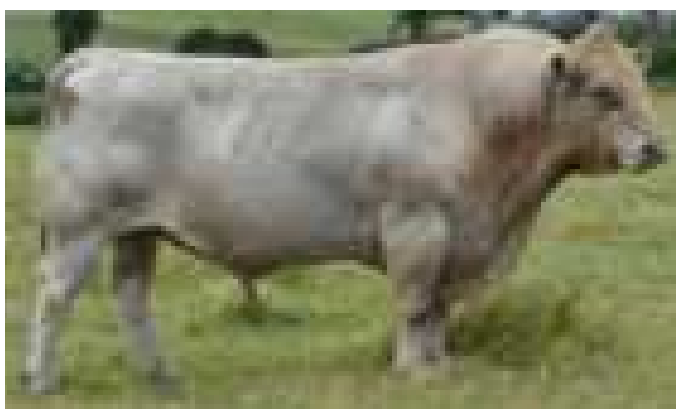
Purchaser: _____ \$ _____



Ayr Park Nevada N31



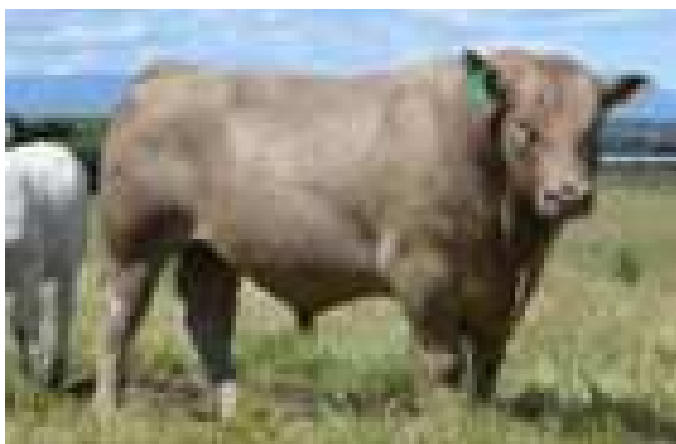
Mount Major Quantum Q1



Melaleuca Karl K231



Mount Major Roger R29



Cadfor Tungsten T121



Woodbourn Sonic S16

WOODBOURN SONIC S16 (PB)

Born: 11/03/2021

Colour: Silver

Tattoo: 4W S16

THE GLEN BASS H018 (GR2)
BURNETT DOWNS KENWORTH K13 (PB)
BURNETT DOWNS WILMA E28 (PB)

Sire: ONWARD NOUGAT (PB)

KELSO BABALON B15 (PB)
ONWARD DEBBIE F46 (PB)
ONWARD DEBBIE 7TH (PB)
KELSO YOGO Y13 (PB) (AI)
KELSO CRACKER C17 (PB)
LINDSAY DONNA Z13 (GR2)

Dam: WOODBOURN BARBARA M141 (PB)

GLENLIAM FARM XCHANGE X97 (PB)
WOODBOURN BARBARA A49 (PB)
WOODBOURN MISS BARBARA T85+98 (PB)

NOTES: This impressive Woodbourn bull was retained in the stud from his year drop. He is an eye catching young sire with so much shape and flare. He has been much admired by all those who has seen him. His 200, 400 and 600 day weights are exceptional, as is his milk.

January 2025 Murray Grey BREEDPLAN

EBV	BIRTH			GROWTH				FERTILITY			CARCASE						
	Calving Ease Direct	Calving Ease Daughters	Gestation Length (days)	Birth Weight (kg)	Milk (kg)	200 – Day Wt (kg)	400 – Day Wt (kg)	600 – Day Wt (kg)	Mature Cow Wt (kg)	Scrotal Size (cm)	Days to Calving	Carcase Wt (kg)	EMA (sq cm)	Rib Fat (mm)	Rump Fat (mm)	Retail Beef Yield %	Intra-Muscular Fat %
+0.5	+1.8	+1.8	-2.3	+3.8	+10	+35	+61	+91	+98	-0.1	-0.4	+61	+2.1	-0.7	-0.8	+1.3	+0.3
Acc	51%	36%	59%	91%	47%	82%	81%	80%	68%	47%	29%	69%	54%	65%	65%	60%	55%

Purchaser: _____ \$ _____

WOODBOURN TRINIDAD T37 (PB)

Born: 23/03/2022

Colour: Silver

Tattoo: 4W T37

GLENLIAM FARM ZEPPLIN Z80 (PB)
 GLENLIAM FARM JUGERNAUT J104 (PB)
 GLENLIAM FARM GREY LADY X57 (PB)

Sire: CARLINGA NAPOLEON (PB)

JYNDARRA ECLIPSE E6 (PB) (AI)
 CARLINGA LADY LINDA J43 (GR2)
 CARLINGA LADY LINDA Z48 (GR1) (AI)
 MELALEUCA ECUADOR E267 (PB)
 MELALEUCA JACKHAMMER J115 (PB)
 MELALEUCA ESMERELDA E58 (PB)

Dam: WOODBOURN MISS HAMPERSPRIDE M13 (PB)

NAWARRA BANANA BENDER (PB)
 WOODBOURN MISS HAMPERS PRIDE H51 (PB)
 WOODBOURN MISS HAMPERS PRIDE (PB)

NOTES: Woodbourn Trinidad was chosen from his year group, to remain at Woodbourn as a senior sire. His outlook, frame and style impressed us, as did his great growth figures, ideal calving ease and gestation EBV's and his impressive EMA. He is a son of Carlinga Napoleon, a very influential sire at Woodbourn, who died prematurely. We are now very glad to have one of his sons retained here at Woodbourn.

January 2025 Murray Grey BREEDPLAN

EBV	BIRTH			GROWTH					FERTILITY			CARCASE					
	Calving Ease Direct	Calving Ease Daughters	Gestation Length (days)	Birth Weight (kg)	Milk (kg)	200 - Day Wt (kg)	400 - Day Wt (kg)	600 - Day Wt (kg)	Mature Cow Wt (kg)	Scrotal Size (cm)	Days to Calving	Carcase Wt (kg)	EMA (sq cm)	Rib Fat (mm)	Rump Fat (mm)	Retail Beef Yield %	Intra-Muscular Fat %
+1.2	-0.6	-2.2	+4.0	+7	+32	+52	+79	+87	+0.5	-2.5	+53	+3.2	-0.5	-0.6	+1.9	-0.2	
Acc	46%	32%	54%	84%	47%	74%	74%	75%	63%	46%	26%	63%	49%	60%	59%	55%	50%

Purchaser: _____ \$ _____

ONWARD SARGE (PB)

Born: 27/06/2021

Colour: Silver

Tattoo: SUE S18

WOODBOURN GALAXY G107 (PB)
 WOODBOURN KERNEL K78 (PB)
 WOODBOURN MISS JEANETTE D1 (PB)

Sire: MELALEUCA NAPOLEON N169 (PB)

MELALEUCA DEVIL D23 (PB)
 MELALEUCA VIOLET G253 (PB)
 MELALEUCA VIOLET Z48 (PB)
 LINDSAY WEST W13 (PB)
 KELSO BABALON B15 (PB)
 KELSO W22 (PB)

Dam: ONWARD EVELYN G21 (PB)

ONWARD AUTO (PB)
 ONWARD EVELYN 10TH (PB)
 ONWARD EVELYN 3RD (PB)

NOTES: Breeders comments: "A son of a phenotypically magnificent 12 year old matron who continues to breed the house down. Sarge's own raw weight data topped his mob prior to the sale selection and his growth EBV ranked him in the top 5-10% of the breed. His dam's maternal traits, including outstanding milk, fertility, and udder perfection, combined with his own structural soundness, scope, outlook, performance and right down to his skin and hair type, ranks him

January 2025 Murray Grey BREEDPLAN

EBV	BIRTH			GROWTH					FERTILITY			CARCASE					
	Calving Ease Direct	Calving Ease Daughters	Gestation Length (days)	Birth Weight (kg)	Milk (kg)	200 - Day Wt (kg)	400 - Day Wt (kg)	600 - Day Wt (kg)	Mature Cow Wt (kg)	Scrotal Size (cm)	Days to Calving	Carcase Wt (kg)	EMA (sq cm)	Rib Fat (mm)	Rump Fat (mm)	Retail Beef Yield %	Intra-Muscular Fat %
-0.9	+1.1	-1.4	+4.4	+3	+35	+56	+78	+80	+0.0	-0.1	+52	+1.2	-1.5	-2.0	+1.8	-0.6	
Acc	49%	35%	57%	84%	50%	75%	73%	74%	63%	70%	30%	62%	51%	58%	58%	55%	49%

Purchaser: _____ \$ _____

WOODBOURN TRANSFORMER T23 (PB)

Born: 16/03/2022

Colour: Silver

Tattoo: 4W T23

CUDGEGONG PARK BASS (GR1)
 THE GLEN BASS F104 (GR1)
 THE GLEN OPAL Z146 (GR2)

Sire: AYR PARK HUGH H77 (GR2)

WOODBOURN X87 (PB)
 AYR PARK TRIAL & ERROR F92 (PB)
 JYNDARRA TRIAL & ERROR Y4 (PB)
 MELALEUCA ECUADOR E267 (PB)
 MELALEUCA JACKHAMMER J115 (PB)
 MELALEUCA ESMERELDA E58 (PB)

Dam: WOODBOURN HEATHER (PB)

GLENCAIRN TOP GUN W77 (PB)
 WOODBOURN MISS HEATHER A12 (PB)
 WOODBOURN MISS HEATHER X12 (PB)

NOTES: An impressive looking bull who displays smoothness and a free moving gait. A stylish bull with excellent figures to go with it. When you study the figures, you will realise why we used this bull over our young stock: just so impressive. IMF in top 5%, milk in top 1% of the breed and an ideal run of figures for calving, with his calving ease, gestation length and birth weight EBV's being ideal.

January 2025 Murray Grey BREEDPLAN

EBV	BIRTH			GROWTH					FERTILITY			CARCASE					
	Calving Ease Direct	Calving Ease Daughters	Gestation Length (days)	Birth Weight (kg)	Milk (kg)	200 - Day Wt (kg)	400 - Day Wt (kg)	600 - Day Wt (kg)	Mature Cow Wt (kg)	Scrotal Size (cm)	Days to Calving	Carcase Wt (kg)	EMA (sq cm)	Rib Fat (mm)	Rump Fat (mm)	Retail Beef Yield %	Intra-Muscular Fat %
+0.6	-2.1	-0.4	+3.6	+16	+27	+45	+71	+76	+0.7	-3.9	+43	+1.3	+0.8	+1.2	-0.1	+0.9	
Acc	51%	40%	57%	82%	56%	73%	74%	75%	65%	51%	30%	64%	53%	60%	60%	57%	52%

Purchaser: _____ \$ _____

LINDSAY TAPIOCA T97 (PB)

Born: 01/09/2022

Colour: Silver

Tattoo: LSY T97

ROGIALYN JUPITER (GR1) (AI)
 ROGIALYN JUPITER N13 (GR2)
 ROGIALYN TARELLA F9 (PB) (AI) (ET)

Sire: LINDSAY RINGWOOD R91 (PB)

LINDSAY JUDD J95 (PB) (AI)
 LINDSAY ELSA L67 (PB)
 LINDSAY ELSA F105 (PB)
 LINDSAY GOBLIN G15 (PB)
 LINDSAY NACHO N33 (PB) (AI)
 LINDSAY ELSA H18 (PB) (AI)

Dam: LINDSAY CHLOE R58 (PB)

MONTEREY EASY RIDER E108 (PB)
 LINDSAY CHLOE K13 (PB)
 KELSO CHLOE C15 (PB)

NOTES: Breeders comments: "One of the eye catchers of the spring group, that has real potential. Exceptional in both phenotype and performance, and all the product of a very promising young cow's first year of production."

January 2025 Murray Grey BREEDPLAN

EBV	BIRTH			GROWTH					FERTILITY			CARCASE					
	Calving Ease Direct	Calving Ease Daughters	Gestation Length (days)	Birth Weight (kg)	Milk (kg)	200 - Day Wt (kg)	400 - Day Wt (kg)	600 - Day Wt (kg)	Mature Cow Wt (kg)	Scrotal Size (cm)	Days to Calving	Carcase Wt (kg)	EMA (sq cm)	Rib Fat (mm)	Rump Fat (mm)	Retail Beef Yield %	Intra-Muscular Fat %
+1.6		-2.0	+2.7	+3	+24	+51	+71	+82	+1.9	-2.9	+46	+2.1	-0.1	+0.0	+0.9	+0.2	
Acc	31%		46%	75%	38%	68%	66%	63%	49%	69%	26%	54%	46%	55%	55%	51%	44%

Purchaser: _____ \$ _____

WOODBOURN ROSEVEARS R130 (PB)

Born: 30/08/2020

Colour: Silver

Tattoo: 4W R130

MONTEREY MEGAFORCE (PB)
 MONTEREY HARMONY H82 (PB)
 MONTEREY SHOWGIRL E206 (PB)

Sire: AYR PARK MAJOR M55 (PB)

THE GLEN BASS F104 (GR1)
 AYR PARK MATINA J30 (GR2)
 AYR PARK MATINA F80 (PB)
 KELSO YOGO Y13 (PB) (AI)
 KELSO CRACKER C17 (PB)
 LINDSAY DONNA Z13 (GR2)

Dam: WOODBOURN MISS SALLY L110 (PB)

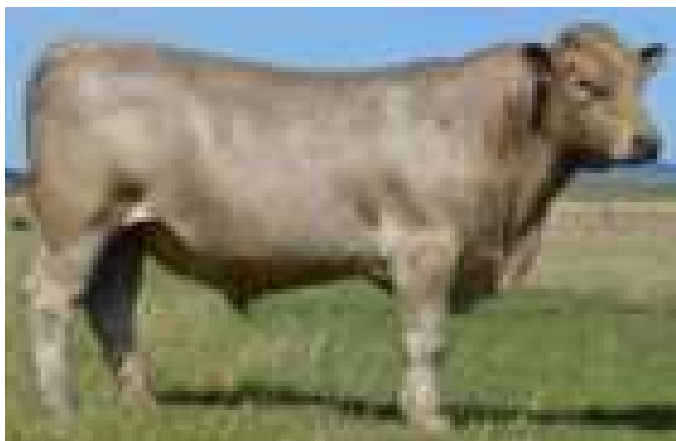
MELALEUCA ARTILLARY A16 (PB)
 WOODBOURN MISS SALLY G17 (PB)
 WOODBOURN SALLY A42 (PB)

NOTES: We are very pleased to have Woodbourn Rosevears R130 here at Woodbourn. He is a big strong, impressive sire with tremendous shape. His figures are absolutely ideal all the way from calving ease, through gestation length, low birth, very good growth and excellent carcass. A bull for all markets. A very good bull.

January 2025 Murray Grey BREEDPLAN

EBV	BIRTH			GROWTH					FERTILITY			CARCASE					
	Calving Ease Direct	Calving Ease Daughters	Gestation Length (days)	Birth Weight (kg)	Milk (kg)	200 - Day Wt (kg)	400 - Day Wt (kg)	600 - Day Wt (kg)	Mature Cow Wt (kg)	Scrotal Size (cm)	Days to Calving	Carcase Wt (kg)	EMA (sq cm)	Rib Fat (mm)	Rump Fat (mm)	Retail Beef Yield %	Intra-Muscular Fat %
+3.6	+1.4	-1.5	+2.8	+7	+26	+42	+60	+63	+0.1	-2.6	+38	+1.7	+1.2	+1.7	-0.3	+0.8	
Acc	45%	33%	51%	79%	49%	71%	71%	68%	56%	42%	26%	59%	42%	51%	51%	47%	45%

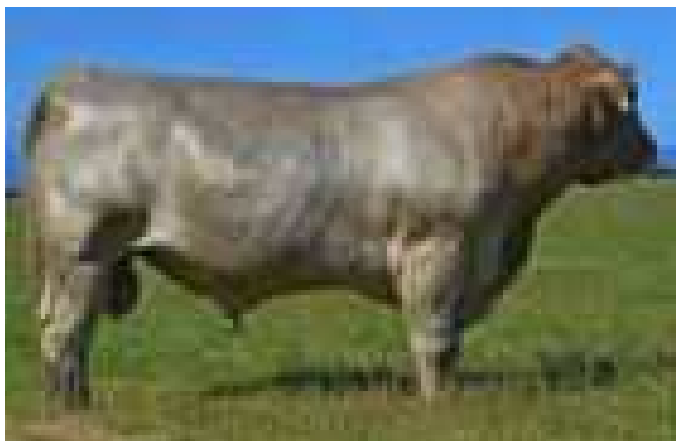
Purchaser: _____ \$ _____



Woodbourn Trinidad T37



Onward Sarge S18



Woodbourn Transformer T23



Lindsay Tapioca T97



Woodbourn Rosevears R130



Onward Striker S43

ONWARD STRIKER S43 (PB)

Born: 21/08/2021

Colour: Grey

Tattoo: SUE S43

WOODBOURN GALAXY G107 (PB)
WOODBOURN KERNEL K78 (PB)
WOODBOURN MISS JEANETTE D1 (PB)

Sire: MELALEUCA NAPOLEON N169 (PB)

MELALEUCA DEVIL D23 (PB)
MELALEUCA VIOLET G253 (PB)
MELALEUCA VIOLET Z48 (PB)
BAROONA PARK CENTAUR (PB) (AI)
BAROONA PARK JUPITER A24 (PB)
BAROONA PARK JULIA (PB) (AI)

Dam: ONWARD EVELYN J45 (PB)

ONWARD MANUKA (PB) (AI)
ONWARD EVELYN D86 (PB)
ONDIONG EVELYN 143RD (PB)

NOTES: Breeder's comments: "Capacity, depth of rib and thickness throughout, feature in this stud sire prospect. He scanned the top raw data EMA of his mob in March and ranks in the top 10% of the breed for such. Very similar in type and breeding to last year's TOTR Mike Traynor Trophy award winner... His ten year old dam has a perfect calving record and her consistency in breeding one of the top weaners each year is remarkable. Striker is a very highly regarded individual."

January 2025 Murray Grey BREEDPLAN

EBV	BIRTH			GROWTH				FERTILITY			CARCASE					
	Calving Ease Direct	Calving Ease Daughters	Gestation Length (days)	Birth Weight (kg)	Milk (kg)	200 - Day Wt (kg)	400 - Day Wt (kg)	600 - Day Wt (kg)	Mature Cow Wt (kg)	Scrotal Size (cm)	Days to Calving	Carcase Wt (kg)	EMA (sq cm)	Rib Fat (mm)	Rump Fat (mm)	Retail Beef Yield %
-4.1	+1.0	+0.3	+5.3	-1	+31	+54	+71	+73	+1.4	-2.4	+44	+2.6	-0.2	-0.3	+1.0	+0.0
48%	34%	56%	86%	50%	75%	73%	74%	63%	70%	30%	62%	51%	60%	60%	56%	49%

Purchaser: _____ \$ _____

**NATIONAL VENDOR DECLARATION
(CATTLE) AND WAYBILL**

DATE: 2/10/2018

SHIP TO: 28400000

This form serves to record correct information for the (S) required to transport.

Part B. To be completed by the vendor or person who is responsible for the delivery of the cattle.

Name of vendor: **WILCO BROWN INC - CATTLE SALES**

Address: **PO BOX 100000**

City: **COLEY**

State: **TAS**

Property Identification Number (PIN) of this property:

MBLFO124

Description of cattle:

Sex: **MALES AND FEMALES**

Age: **ADULT CATTLE**

Weight: **60-80 KG**

Color: **RED**

Origin:

Country: **MAJOR'S**

State: **TAS, WESTERN TOWNSHIP, TAS**

Localities (if allowed) of cattle: **CR. SPENCER CRATER, TAS**

Destination (if any): **MAJOR'S**

Address: **MAJOR'S**

Details of other statutory documents relating to this movement (e.g. health certificate)

Part A. To be completed by the vendor or person who is responsible for the delivery of the cattle.

Name of person completing this form: **MAJOR'S**

Address: **MAJOR'S**

City: **MAJOR'S**

State: **TAS**

Postcode: **7243**

Phone: **081 333 3333**

Fax: **081 333 3333**

Email: **major@major.com.au**

Mobile: **081 333 3333**

Other: **MAJOR'S**

Part B. To be completed by the vendor or person who is responsible for the delivery of the cattle.

Name of person completing this form: **MAJOR'S**

Address: **MAJOR'S**

City: **MAJOR'S**

State: **TAS**

Postcode: **7243**

Phone: **081 333 3333**

Fax: **081 333 3333**

Email: **major@major.com.au**

Mobile: **081 333 3333**

Other: **MAJOR'S**

Description of cattle:

Sex: **MALES AND FEMALES**

Age: **ADULT CATTLE**

Weight: **60-80 KG**

Color: **RED**

Origin:

Country: **MAJOR'S**

State: **TAS, WESTERN TOWNSHIP, TAS**

Localities (if allowed) of cattle: **CR. SPENCER CRATER, TAS**

Destination (if any): **MAJOR'S**

Address: **MAJOR'S**

City: **MAJOR'S**

State: **TAS**

Postcode: **7243**

Phone: **081 333 3333**

Fax: **081 333 3333**

Email: **major@major.com.au**

Mobile: **081 333 3333**

Other: **MAJOR'S**

Part B. To be completed by the vendor or person who is responsible for the delivery of the cattle.

Name of person completing this form: **MAJOR'S**

Address: **MAJOR'S**

City: **MAJOR'S**

State: **TAS**

Postcode: **7243**

Phone: **081 333 3333**

Fax: **081 333 3333**

Email: **major@major.com.au**

Mobile: **081 333 3333**

Other: **MAJOR'S**

Name of person completing this form: **MAJOR'S**

Address: **MAJOR'S**

City: **MAJOR'S**

State: **TAS**

Postcode: **7243**

Phone: **081 333 3333**

Fax: **081 333 3333**

Email: **major@major.com.au**

Mobile: **081 333 3333**

Other: **MAJOR'S**

Part B. To be completed by the vendor or person who is responsible for the delivery of the cattle.

Name of person completing this form: **MAJOR'S**

Address: **MAJOR'S**

City: **MAJOR'S**

State: **TAS**

Postcode: **7243**

Phone: **081 333 3333**

Fax: **081 333 3333**

Email: **major@major.com.au**

Mobile: **081 333 3333**

Other: **MAJOR'S**

Name of person completing this form: **MAJOR'S**

Address: **MAJOR'S**

City: **MAJOR'S**

State: **TAS**

Postcode: **7243**

Phone: **081 333 3333**

Fax: **081 333 3333**

Email: **major@major.com.au**

Mobile: **081 333 3333**

Other: **MAJOR'S**

Part B. To be completed by the vendor or person who is responsible for the delivery of the cattle.

Name of person completing this form: **MAJOR'S**

Address: **MAJOR'S**

City: **MAJOR'S**

State: **TAS**

Postcode: **7243**

Phone: **081 333 3333**

Fax: **081 333 3333**

Email: **major@major.com.au**

Mobile: **081 333 3333**

Other: **MAJOR'S**

NOTES

A series of horizontal dotted lines for writing notes.

Woodbourn Buyer's Instruction Slip

Please print details carefully

Trading Name:

First Name: Surname:

Stud Ident: Stud Name:

Address:

..... Post Code:

Telephone: Mobile:

Email:

Lots Purchased:

Send account to:

Would you like your bull to be delivered within Tasmania by Charles Wallace Yes No
Please give a map for delivery to Agents on Sale Day


Please tick if stud transfer is required. Members or intending members only Stud ident.

Please complete the insurance proposal supplied at the sale. Vendor declaration is on page 54.

SIGNATURE: DATE: 24TH MARCH 2025

SPECIAL NOTICE TO BUYERS

1. In the interest of buyers and to prevent the occurrence of mistakes, all instructions concerning delivery, trucking or shipping of cattle must be given in writing and signed by the buyer or his representative.
2. Instructions for despatch of consignments comprising more than one owners must be signed by each buyer; no instructions will be considered complete until all have signed. No verbal instructions can be accepted.
3. Invoicing of purchases - Due to the change of sale date, invoicing of purchases may be delayed for one month, as freight invoices will take this long to process, and outside agents need this time to forward accounts. This constitutes one month's interest free terms to all purchasers.
4. Conditions of sale available from selling agents.



CAMERONS

As one of the largest Tasmanian owned accounting practices, Camerons assists Business and Agricultural clients with all taxation and accounting needs for their businesses, including succession planning.

Our team at Camerons offer tailored accounting advice and practical solutions to meet the needs of its agricultural clients; from GST and CGT advice to succession planning and self managed super fund administration.

Our Focus and ability to deliver impeccable service to our clients has enabled us to specialise in assisting agricultural clients from diverse backgrounds and industries.

We value and appreciate each client and their individual circumstance.

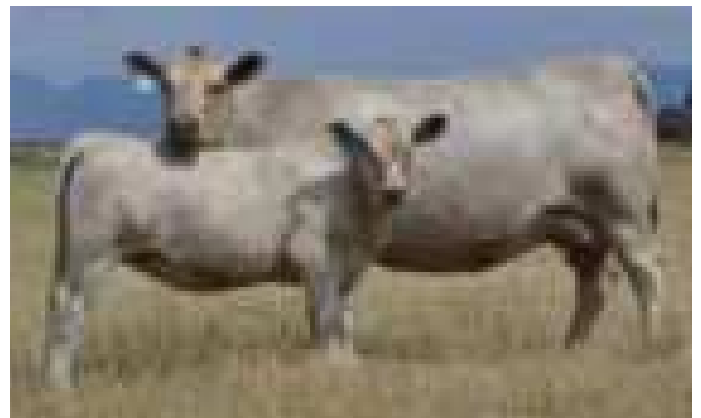
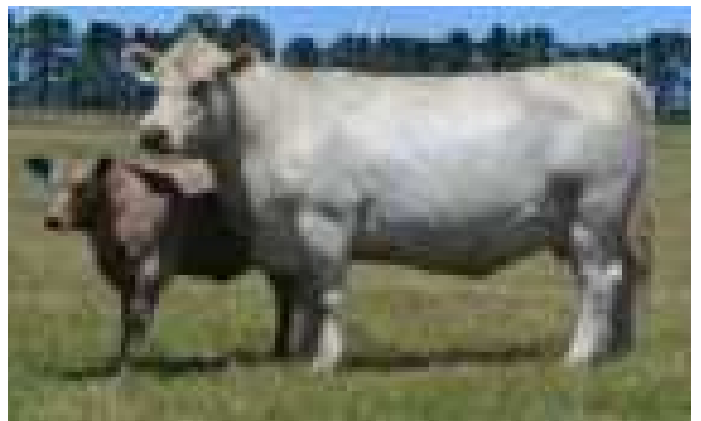
Our comprehensive services include:

- Pro-active taxation advice
- GST and CGT advice
- Accounting software solutions
- Auditing
- Succession and estate planning, including farm transfers to children
- Self-managed Super Fund administrations and audit
- Retirement and investment advice

LAUNCESTON 46-54 Cameron Street Ph: 03 6337 7777	SCOTTSDALE 24A King Street Ph: 03 6352 9999	DEVONPORT 23 Stewart Street Ph: 03 6422 7888	ULVERSTONE 3A The Quadrant Ph: 03 6425 0666
---	--	---	--

BUILDING THE FOUNDATIONS FOR BUSINESS

Quality of the animals sold at previous Woodbourn sales



SALE STATISTICS: Bulls to \$..... Ave \$..... • Cows to \$..... Ave \$.....
Heifers to \$..... Ave \$..... • Commercial Heifers to \$..... Ave \$.....



**WOODBOURN
MURRAY GREYS**

Woodbourn 2025

56 years

Contacts: Charles Wallace: 0409 397 628

Janet Wallace: 0407 054 018

woodbourn@outlook.com

Lauchie Cole: 0419 150 808

Ben Lane: 0439 224 211



Mission Statement: Woodbourn strives to source and make available, superior genetics to maximise profitability for itself and its clients, in an atmosphere of trust, reliability and good humour.

Woodbourn, 390 Saundridge Road, Cressy, Northern Tasmania